

A. Organizational Chart

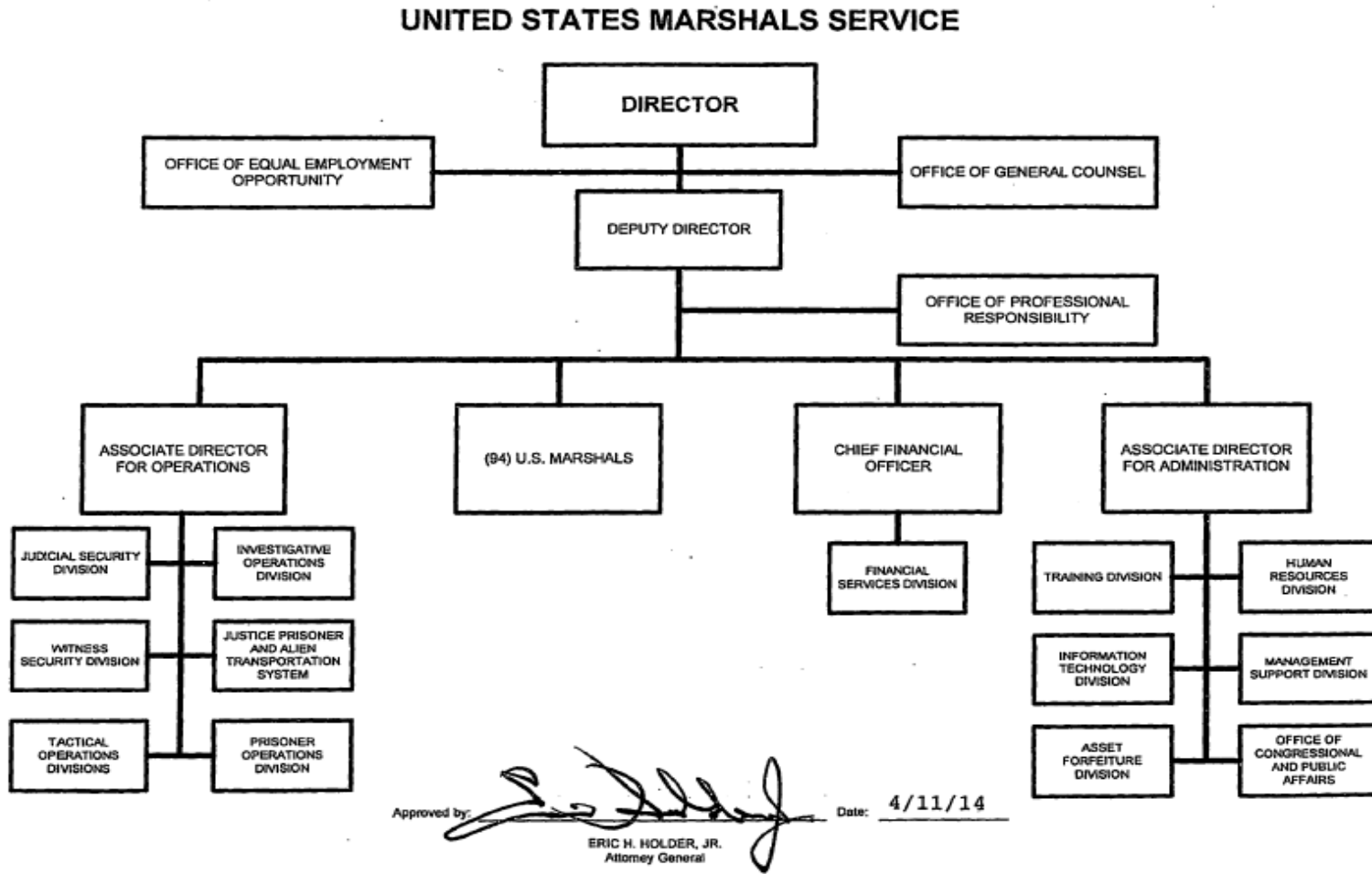


Exhibit A - Organizational Chart

B. Summary of Requirements

Summary of Requirements
 Justice Prisoner and Alien Transportation System
 Revolving Fund
 (Dollars in Thousands)

	FY 2018 Request		
	Positions	FTE	Amount
2016 Operating Level 1/	123	96	53,182
2017 Operating Level	123	108	51,565
2018 Changes to Operating Level	0	2	717
2018 Total Request	123	110	52,282
2017 - 2018 Total Change	0	2	717

^{1/} FY 2016 FTE is actual

B. Summary of Requirements

Summary of Requirements
 Justice Prisoner and Alien Transportation System
 Revolving Fund
 (Dollars in Thousands)

Program Activity	2016 Operating Level			2017 Operating Level			2018 Changes to Operating Level			2018 Operating Level		
	Direct Positions	Actual FTE	Amount	Direct Positions	Estimated FTE	Amount	Direct Positions	Estimated FTE	Amount	Direct Positions	Estimated FTE	Amount
Justice Prisoner and Alien Transportation System	123	96	53,182	123	108	51,565	0	2	717	123	110	52,282
Total	123	96	53,182	123	108	51,565	0	2	717	123	110	52,282

Crosswalk of 2016 Availability
 Justice Prisoner and Alien Transportation System
 Revolving Fund
 (Dollars in Thousands)

Program Activity	2016 Initial Availability			Reprogramming / Transfers			Carryover	Recoveries / Refunds	2016 Actual		
	Direct Positions	Actual FTE	Amount	Direct Positions	Estimated FTE	Amount	Amount	Amount	Direct Positions	Actual FTE	Amount
Justice Prisoner and Alien Transportation System	123	96	48,523	0	0	64	24,626	155	123	96	73,368
Total		96	48,523	0	0	64	24,626	155	123	96	73,368

Carryover:

Includes the mandatory CORPUS balance and carryover reimbursable obligation authority.

Recoveries/Refunds:

JPATS is a revolving fund and prior year recoveries are reapportioned and used in current year operations.

Total of 2016 Estimate Source: SF-133 dated 09/30/2016 line 1910

Crosswalk of 2017 Availability
 Justice Prisoner and Alien Transportation System
 Revolving Fund
 (Dollars in Thousands)

Program Activity	2017 Initial Availability			Reprogramming / Transfers			Carryover	Recoveries / Refunds	2017 Availability		
	Direct Positions	Estimated FTE	Amount	Direct Positions	Estimated FTE	Amount	Amount	Amount	Direct Pos.	Estim. FTE	Amount
Justice Prisoner and Alien Transportation System	123	108	54,661	0	0	0	20,186	550	123	108	75,397
Total		108	54,661	0	0	0	20,186	550	123	108	75,397

Carryover:

Includes the mandatory CORPUS balance and carryover reimbursable obligation authority.

Recoveries/Refunds:

JPATS is a revolving fund and prior year recoveries are reapportioned and used in current year operations.

Summary of Reimbursable Resources
 Justice Prisoner and Alien Transportation System
 Revolving Fund
 (Dollars in Thousands)

Collections by Source	2016 Operating Level			2017 Operating Level			2018 Operating Level			Increase / Decrease		
	Positions	FTE	Amount	Positions	FTE	Amount	Positions	FTE	Amount	Positions	FTE	Amount
United States Marshals Service	0	0	29,714	0	0	33,920	0	0	34,423	0	0	503
Bureau of Prisons	0	0	18,681	0	0	19,291	0	0	20,255	0	0	964
State, Local, Dept of Defense, and Misc.			551									
Total Collections by Source	123	96	48,946	123	108	53,211	123	110	54,678	0	2	1,467

Obligations by Program Activity	2016 Operating Level			2017 Operating Level			2018 Operating Level			Increase / Decrease		
	Positions	FTE	Amount	Positions	FTE	Amount	Positions	FTE	Amount	Positions	FTE	Amount
Justice Prisoner and Alien Transportation System	123	96	53,182	123	108	51,565	123	110	52,282	0	2	717
Budgetary Resources	123	96	53,182	123	108	51,565	123	110	52,282	0	2	717

The amounts for collections are inclusive of expenses for depreciation which are collected from the customer.

The operating authority does not include amounts for depreciation as it does not require budgetary authority.

I. Detail of Permanent Positions by Category

Detail of Permanent Positions by Category

Justice Prisoner and Alien Transportation System

Revolving Fund

(Dollars in Thousands)

Category	2016	2017	2018		
	Operating Level Reimb. Pos.	Operating Level Reimb. Pos.	ATBs	Changes to Operating Level	Total Reimb. Pos.
Intelligence Series (132)	2	2	0	0	2
Clerical and Office Services (300-399)	17	17	0	0	17
Accounting and Budget (500-599)	11	11	0	0	11
Paramedics/Nurses (610 & 640)	7	11	0	0	11
Attorneys (905)	1	1	0	0	1
Business & Industry (1100-1199)	5	5	0	0	5
Miscellaneous Inspectors Series (1801)	24	24	0	0	24
Criminal Investigative Series (1811)	4	4	0	0	4
Quality Assurance, Inspection & Grading Group (1900-1999)	2	3	0	0	3
Transportation Group (2100-2199)	43	38	0	0	38
Information Technology Mgmt (2210)	7	7	0	0	7
Total	123	123	0	0	123
U.S. Field	123	123	0	0	123
Total	123	123	0	0	123

Summary of Requirements by Object Class

Justice Prisoner and Alien Transportation System

Revolving Fund

(Dollars in Thousands)

Object Class	2016 Operating Level		2017 Operating Level		2018 Operating Level		Increase / Decrease	
	FTE	Amount	FTE	Amount	FTE	Amount	FTE	Amount
11.1 Full-Time Permanent	96	8,655	108	9,828	110	10,018	2	190
11.5 Other Personnel Compensation	0	647	0	855	0	857	0	2
<i>Overtime</i>	0	469	0	663	0	620	0	-43
<i>Other Compensation</i>	0	178	0	192	0	237	0	45
11.8 Special Personal Services Payments	0	3,822	0	3,292	0	3,379	0	87
Total	96	13,124	108	13,975	110	14,254	2	279
Other Object Classes								
12.0 Personnel Benefits		3,543		3,391		3,816		425
21.0 Travel and Transportation of Persons		614		1,169		1,245		76
22.0 Transportation of Things		0		0		0		0
23.1 Rental Payments to GSA		817		788		788		0
23.2 Rental Payments to Others		24		96		102		6
23.3 Communications, Utilities, and Miscellaneous Charges		5,305		539		3,193		2,654
25.1 Advisory and Assistance Services		179		443		255		-188
25.2 Other Services from Non-Federal Sources		417		9,108		1,016		-8,092
25.3 Other Goods and Services from Federal Sources		722		391		596		205
25.4 Operation and Maintenance of Facilities		357		281		245		-36
25.6 Medical Care		0		0		113		113
25.7 Operation and Maintenance of Equipment		10,377		8,410		14,752		6,342
26.0 Supplies and Materials		7,436		12,805		11,739		-1,066
31.0 Equipment		10,194		168		168		0
32.0 Land and Structures		73		0		0		0
Total Obligations		53,182		51,565		52,282		717
Subtract - Unobligated Balance, Start-of-Year		-24,626		-20,186		-20,186		0
Subtract - Recoveries/Refunds		-219		0		0		0
Add - Unobligated End-of-Year, Available		20,186		20,186		20,186		0
Total Direct Requirements	0	48,523	0	51,565	0	52,282	0	717
Reimbursable FTE								
Full-Time Permanent	96		108		110		2	
FY 2016 Obligation Total from September 2016 SF-133, line 2104.								

Schedule of Aircraft
 Justice Prisoner and Alien Transportation System
 Revolving Fund
 (Dollars in Thousands)

Type of Aircraft (Passenger Capacity)	End-of-Year Inventory	2016			2017			2018				
		Acquired	Disposed	End of Year	Acquired	Disposed	End of Year	Acquired	Average Cost (\$000)	Disposed	End of Year	
Direct Purchase												
Jet Engine (8-10)	0.0	0.0	0.0	0.0	0.0	0.0	0.0	0.0	0.0	0.0	0.0	0.0
Jet Engine (120-140)	2.0	1.0	0.0	3.0	0.0	0.0	3.0	0.0	0.0	0.0	0.0	3.0
Turbo-Prop (50-60)	1.0	0.0	0.0	1.0	0.0	0.0	1.0	0.0	0.0	0.0	0.0	1.0
Turbo-Prop (10-20)	0.0	0.0	0.0	0.0	0.0	0.0	0.0	0.0	0.0	0.0	0.0	0.0
Subtotal, Purchased	3.0	1.0	0.0	4.0	0.0	0.0	4.0	0.0	0.0	0.0	0.0	4.0
Leased												
Turbo-Prop (11)	0.0	0.0	0.0	0.0	0.0	0.0	0.0	0.0	0.0	0.0	0.0	0.0
Jet Engine (120-140)	1.0	0.0	1.0	0.0	0.0	0.0	0.0	0.0	0.0	0.0	0.0	0.0
Jet Engine (10)	0.0	0.0	0.0	0.0	0.0	0.0	0.0	0.0	0.0	0.0	0.0	0.0
Subtotal, Leased	1.0	0.0	1.0	0.0	0.0	0.0	0.0	0.0	0.0	0.0	0.0	0.0
Seized or No Cost												
Excess:												
Single-Engine (3)	0.0	0.0	0.0	0.0	0.0	0.0	0.0	0.0	0.0	0.0	0.0	0.0
Twin-Engine (6)	0.0	0.0	0.0	0.0	0.0	0.0	0.0	0.0	0.0	0.0	0.0	0.0
Turbo Prop (50)	0.0	0.0	0.0	0.0	0.0	0.0	0.0	0.0	0.0	0.0	0.0	0.0
Jet Engine (120)	0.0	0.0	0.0	0.0	0.0	0.0	0.0	0.0	0.0	0.0	0.0	0.0
Jet Engine (75)	0.0	0.0	0.0	0.0	0.0	0.0	0.0	0.0	0.0	0.0	0.0	0.0
Jet Engine (8)	0.0	0.0	0.0	0.0	0.0	0.0	0.0	0.0	0.0	0.0	0.0	0.0
Jet Engine (10)	0.0	0.0	0.0	0.0	0.0	0.0	0.0	0.0	0.0	0.0	0.0	0.0
Subtotal, Seized	0.0	0.0	0.0	0.0	0.0	0.0	0.0	0.0	0.0	0.0	0.0	0.0
Total Aircraft	4.0	1.0	1.0	4.0	0.0	0.0	4.0	0.0	0.0	0.0	0.0	4.0