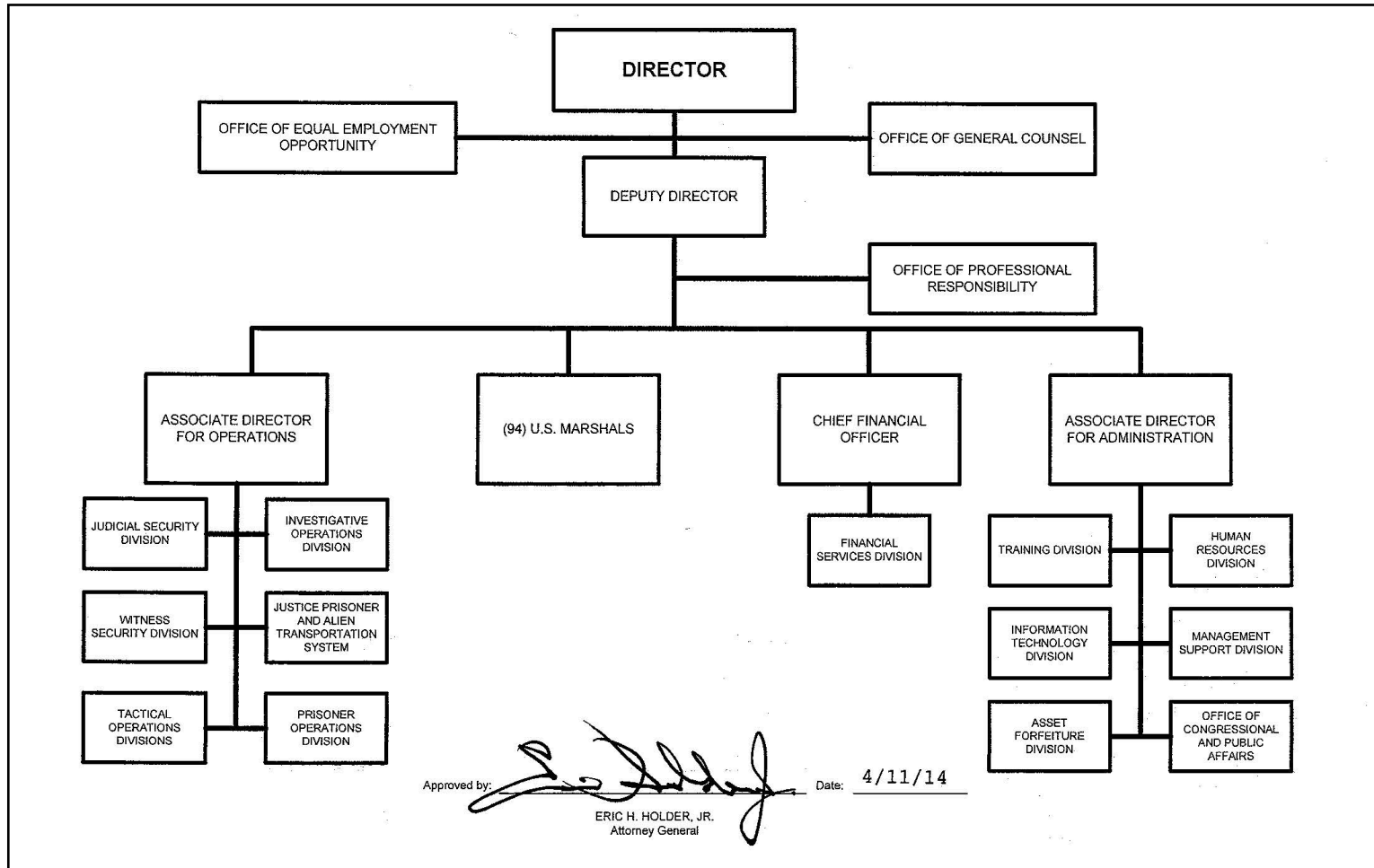


# Organizational Chart

## U.S. Marshals Service



**Summary of Requirements**  
 U.S. Marshals Service  
 Construction  
 (Dollars in Thousands)

	FY 2022 Request		
	Positions	Estimate FTE	Amount
<b>2020 Enacted 1/</b>	<b>0</b>	<b>0</b>	<b>15,000</b>
<b>Total 2020 Enacted</b>	<b>0</b>	<b>0</b>	<b>15,000</b>
<b>2021 Enacted</b>	<b>0</b>	<b>0</b>	<b>15,000</b>
<b>Base Adjustments</b>			
<b>2022 Current Services</b>	<b>0</b>	<b>0</b>	<b>15,000</b>
<b>2022 Total Request</b>	<b>0</b>	<b>0</b>	<b>15,000</b>
2021 - 2022 Total Change	0	0	0

<sup>1/</sup> FY 2020 FTE is actual

### Summary of Requirements

U.S. Marshals Service  
 Construction  
 (Dollars in Thousands)

Program Activity	FY 2020 Enacted			FY 2021 Enacted			FY 2022 Technical and Base Adjustments			FY 2022 Current Services		
	Positions	Actual FTE	Amount	Positions	Est. FTE	Amount	Positions	Est. FTE	Amount	Positions	Est. FTE	Amount
USMS Construction	0	0	15,000	0	0	15,000	0	0	0	0	0	15,000
<b>Total Direct</b>	<b>0</b>	<b>0</b>	<b>15,000</b>	<b>0</b>	<b>0</b>	<b>15,000</b>	<b>0</b>	<b>0</b>	<b>0</b>	<b>0</b>	<b>0</b>	<b>15,000</b>
Balance Rescission			0			0			0			0
<b>Total Direct with Rescission</b>			<b>15,000</b>			<b>15,000</b>			<b>0</b>			<b>15,000</b>
Reimbursable FTE		0			0			0			0	
<b>Total Direct and Reimb. FTE</b>		<b>0</b>			<b>0</b>			<b>0</b>			<b>0</b>	
Other FTE:												
LEAP		0			0			0			0	
Overtime		0			0			0			0	
<b>Grand Total, FTE</b>		<b>0</b>			<b>0</b>			<b>0</b>			<b>0</b>	

Program Activity	2022 Increases			2022 Offsets			2022 Request		
	Positions	Est. FTE	Amount	Positions	Est. FTE	Amount	Positions	Est. FTE	Amount
USMS Construction	0	0	0	0	0	0	0	0	15,000
<b>Total Direct</b>	<b>0</b>	<b>0</b>	<b>0</b>	<b>0</b>	<b>0</b>	<b>0</b>	<b>0</b>	<b>0</b>	<b>15,000</b>
Balance Rescission			0			0			0
<b>Total Direct with Rescission</b>			<b>0</b>			<b>0</b>			<b>15,000</b>
Reimbursable FTE		0			0			0	
<b>Total Direct and Reimb. FTE</b>		<b>0</b>			<b>0</b>			<b>0</b>	
Other FTE:									
LEAP		0			0			0	
Overtime		0			0			0	
<b>Grand Total, FTE</b>		<b>0</b>			<b>0</b>			<b>0</b>	

**Resources by Department of Justice Strategic Goal and Objective**

U.S. Marshals Service  
 Construction  
 (Dollars in Thousands)

Strategic Goal and Strategic Objective	FY 2020 Enacted		FY 2021 Enacted		FY 2022 Current Services		FY 2022 Increases		FY 2022 Offsets		FY 2022 Total Request	
	Direct & Reimb FTE	Direct Amount	Direct & Reimb FTE	Direct Amount	Direct & Reimb FTE	Direct Amount	Direct & Reimb FTE	Direct Amount	Direct & Reimb FTE	Direct Amount	Direct & Reimb FTE	Direct Amount
<b>Goal 3 Reduce Violent Crime and Promote Public Safety</b>												
3.1 Combat violent crime, promote safe communities, and uphold the rights of victims of crime	0	15,000	0	15,000								
<b>Subtotal, Goal 3</b>	<b>0</b>	<b>15,000</b>	<b>0</b>	<b>15,000</b>								
<b>TOTAL</b>	<b>0</b>	<b>15,000</b>	<b>0</b>	<b>15,000</b>								

### Crosswalk of 2020 Availability

U.S. Marshals Service

Construction

(Dollars in Thousands)

Program Activity	FY 2020 Enacted			Reprogramming/Transfers			Carryover	Recoveries/ Refunds	FY 2020 Availability		
	Positions	Actual FTE	Amount	Positions	Actual FTE	Amount	Amount	Amount	Positions	Actual FTE	Amount
USMS Construction	0	0	15,000	0	0	0	14,473	946	0	0	30,419
<b>Total Direct</b>	<b>0</b>	<b>0</b>	<b>15,000</b>	<b>0</b>	<b>0</b>	<b>0</b>	<b>14,473</b>	<b>946</b>	<b>0</b>	<b>0</b>	<b>30,419</b>
Balance Rescission			0				0	0			0
Total Direct with Rescission			15,000				14,473	946			30,419
Reimbursable FTE		0			0					0	
Total Direct and Reimb. FTE		0			0					0	
Other FTE:											
LEAP FTE		0			0					0	
Overtime		0			0					0	
Grand Total, FTE		0			0					0	

**Reprogramming/Transfers:**

Not applicable

**Carryover:**

Unobligated Balances of \$14,473,082 were carried over from Construction No-Year (15-0133-X) for courthouse renovation and related costs.

**Recoveries/Refunds:**

Recoveries from Prior Year obligations amounting to \$946,315 from Construction No-Year (15-0133-X). The USMS will use these funds for construction in space controlled, occupied, or utilized by the USMS for prisoner holding and related support, including project management costs to efficiently and effectively execute these projects. This use of funds is consistent with the manner in which funding was originally appropriated.

### Crosswalk of 2021 Availability

U.S. Marshals Service  
Construction  
(Dollars in Thousands)

Program Activity	FY 2021 Enacted			Reprogramming/Transfers			Carryover	Recoveries/ Refunds	FY 2021 Availability		
	Positions	Est. FTE	Amount	Positions	Est. FTE	Amount	Amount	Amount	Positions	Est. FTE	Amount
USMS Construction	0	0	15,000	0	0	0	9,090	3,000	0	0	27,090
<b>Total Direct</b>	<b>0</b>	<b>0</b>	<b>15,000</b>	<b>0</b>	<b>0</b>	<b>0</b>	<b>9,090</b>	<b>3,000</b>	<b>0</b>	<b>0</b>	<b>27,090</b>
Balance Rescission			0			0	0	0			0
Total Direct with Rescission			15,000			0	9,090	3,000			27,090
Reimbursable FTE		0			0					0	
Total Direct and Reimb. FTE		0			0					0	
Other FTE:											
LEAP FTE		0			0					0	
Overtime		0			0					0	
Grand Total, FTE		0			0					0	

**Reprogramming/Transfers:**

Not applicable

**Carryover:**

Unobligated Balances of \$9,089,934 were carried over from Construction No-Year (15-0133-X) for courthouse renovation and related costs.

**Recoveries/Refunds:**

Anticipated Recoveries from Prior Year obligations amounting to \$3,000,000 from Construction No-Year (15-0133-X). The USMS will use these funds for construction in space controlled, occupied, or utilized by the USMS for prisoner holding and related support, including project management costs to efficiently and effectively execute these projects. This use of funds is consistent with the manner in which funding was originally appropriated.

### Summary of Requirements by Object Class

U.S. Marshals Service

Construction

(Dollars in Thousands)

Object Class	FY 2020 Actual		FY 2021 Enacted		FY 2022 Request		Increase/Decrease	
	Act. FTE	Amount	Direct FTE	Amount	Direct FTE	Amount	Direct FTE	Amount
11.1 - Full-time permanent	0	0	0	0	0	0	0	0
11.3 - Other than full-time permanent	0	0	0	0	0	0	0	0
11.5 - Other personnel compensation	0	0	0	0	0	0	0	0
<i>Overtime</i>	0	0	0	0	0	0	0	0
<i>Other Compensation</i>	0	0	0	0	0	0	0	0
11.8 - Special personal services payments	0	0	0	0	0	0	0	0
<b>Total</b>	<b>0</b>	<b>0</b>	<b>0</b>	<b>0</b>	<b>0</b>	<b>0</b>	<b>0</b>	<b>0</b>
<b>Other Object Classes</b>								
21.0 - Travel and transportation of persons		96		0		0	0	0
23.3 - Communications, utilities, and miscellaneous charges		31		0		0	0	0
25.1 - Advisory and assistance services		303		400		400	0	0
25.3 - Other goods and services from federal sources		0		0		0	0	0
25.4 - Operation and maintenance of facilities		1,186		1,200		1,200	0	0
26.0 - Supplies and materials		5		0		0	0	0
31.0 - Equipment		1,892		1,900		1,900	0	0
32.0 - Land and structures		17,816		11,500		11,500	0	0
<b>Total Obligations</b>		<b>21,329</b>		<b>15,000</b>		<b>15,000</b>	<b>0</b>	<b>0</b>
<b>Net of:</b>								
Unobligated Balance, Start-of-Year		-14,473		-9,090		-12,090	0	-3,000
Transfers/Reprogramming		0		0		0	0	0
Recoveries/Refunds		-946		-3,000		0	0	3,000
Balance Rescission		0		0		0	0	0
Unobligated End-of-Year, Available		9,090		12,090		12,090	0	0
Unobligated End-of-Year, Expiring		0		0		0	0	0
<b>Total Direct Requirements</b>		<b>15,000</b>		<b>15,000</b>		<b>15,000</b>		<b>0</b>
Reimbursable FTE								
Full-Time Permanent	0		0		0		0	0