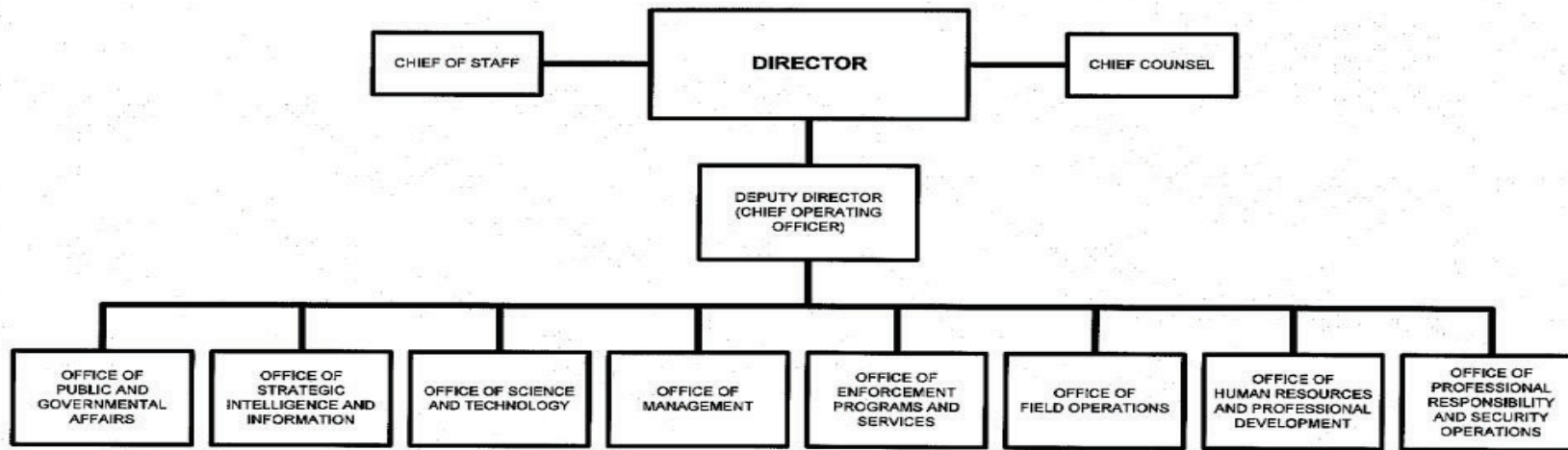


A. Organization Chart

### BUREAU OF ALCOHOL, TOBACCO, FIREARMS, AND EXPLOSIVES



Approved by:

  
ERIC H. HOLDER, JR.  
Attorney General

Date: 5/16/13

B. Summary of Requirements

**Summary of Requirements**  
 Bureau of Alcohol, Tobacco, Firearms, and Explosives  
 Salaries and Expenses  
 (Dollars in Thousands)

	FY 2017 Request		
	Direct Pos.	Estimate FTE	Amount
<b>2015 Enacted 1/</b>	<b>5,101</b>	<b>4,821</b>	<b>1,201,000</b>
2015 Balance Rescission	0	0	-3,200
<b>Total 2015 Enacted with Rescissions 1/</b>	<b>5,101</b>	<b>4,821</b>	<b>1,197,800</b>
<b>2016 Enacted</b>	<b>5,101</b>	<b>5,028</b>	<b>1,240,000</b>
<b>Base Adjustments</b>			
Pay and Benefits	0	73	17,838
Domestic Rent and Facilities	0	0	-5,914
Foreign Expenses	0	0	-167
<b>Total Base Adjustments</b>	<b>0</b>	<b>73</b>	<b>11,757</b>
<b>Total Technical and Base Adjustments</b>	<b>0</b>	<b>73</b>	<b>11,757</b>
<b>2017 Current Services</b>	<b>5,101</b>	<b>5,101</b>	<b>1,251,757</b>
<b>Program Changes</b>			
Increases:			
Enforcement, Inspection and Regulatory Support	200	100	35,585
National Integrated Ballistics Information Network (NIBIN)	8	4	4,000
Industry Support	22	11	5,673
Next Generation Case Management System	0	0	9,048
Subtotal, Increases	230	115	54,306
<b>Total Program Changes</b>	<b>230</b>	<b>115</b>	<b>54,306</b>
<b>2017 Total Request</b>	<b>5,331</b>	<b>5,216</b>	<b>1,306,063</b>
2016 - 2017 Total Change	230	188	66,063

<sup>1/</sup> FY 2015 FTE is actual

B. Summary of Requirements

**Summary of Requirements**  
 Bureau of Alcohol, Tobacco, Firearms, and Explosives  
 Salaries and Expenses  
 (Dollars in Thousands)

Program Activity	FY 2015 Appropriation Enacted			FY 2016 Enacted			FY 2017 Technical and Base Adjustments			FY 2017 Current Services		
	Direct Pos.	Actual FTE	Amount	Direct Pos.	Est. FTE	Amount	Direct Pos.	Est. FTE	Amount	Direct Pos.	Est. FTE	Amount
Law Enforcement Operations	4,305	4,068	1,013,524	4,250	4,189	1,033,168	0	61	9,796	4,250	4,250	1,042,964
Investigative Support Services	796	753	187,476	851	839	206,832	0	12	1,961	851	851	208,793
<b>Total Direct</b>	<b>5,101</b>	<b>4,821</b>	<b>1,201,000</b>	<b>5,101</b>	<b>5,028</b>	<b>1,240,000</b>	<b>0</b>	<b>73</b>	<b>11,757</b>	<b>5,101</b>	<b>5,101</b>	<b>1,251,757</b>
Balance Rescission			-3,200			0			0			0
<b>Total Direct with Rescission</b>			<b>1,197,800</b>			<b>1,240,000</b>			<b>11,757</b>			<b>1,251,757</b>
Reimbursable FTE		52			52			0			52	
<b>Total Direct and Reimb. FTE</b>		<b>4,873</b>			<b>5,080</b>			<b>73</b>			<b>5,153</b>	
Other FTE:												
LEAP		608			608			0			608	
Overtime		38			38			0			38	
<b>Grand Total, FTE</b>		<b>5,519</b>			<b>5,726</b>			<b>73</b>			<b>5,799</b>	

Program Activity	2017 Increases			2017 Offsets			2017 Request		
	Direct Pos.	Est. FTE	Amount	Direct Pos.	Est. FTE	Amount	Direct Pos.	Est. FTE	Amount
Law Enforcement Operations	200	100	44,633	0	0	0	4,450	4,350	1,087,597
Investigative Support Services	30	15	9,673	0	0	0	881	866	218,466
<b>Total Direct</b>	<b>230</b>	<b>115</b>	<b>54,306</b>	<b>0</b>	<b>0</b>	<b>0</b>	<b>5,331</b>	<b>5,216</b>	<b>1,306,063</b>
Balance Rescission			0			0			0
<b>Total Direct with Rescission</b>			<b>54,306</b>			<b>0</b>			<b>1,306,063</b>
Reimbursable FTE		0			0			52	
<b>Total Direct and Reimb. FTE</b>		<b>115</b>			<b>0</b>			<b>5,268</b>	
Other FTE:									
LEAP		0			0			608	
Overtime		0			0			38	
<b>Grand Total, FTE</b>		<b>115</b>			<b>0</b>			<b>5,914</b>	

**FY 2017 Program Increases/Offsets by Decision Unit**

Bureau of Alcohol, Tobacco, Firearms, and Explosives  
 Salaries and Expenses  
 (Dollars in Thousands)

Program Increases	Location of Description by Program Activity	Law Enforcement Operations				Investigative Support Services				Total Increases			
		Direct Pos.	Agt./Atty.	Est. FTE	Amount	Direct Pos.	Agt./Atty.	Est. FTE	Amount	Direct Pos.	Agt./Atty.	Est. FTE	Amount
Enforcement, Inspection and Regulatory Support		200	0	100	35,585	0	0	0	0	200	0	100	35,585
National Integrated Ballistics Information Network (NIBIN)		0	0	0	0	8	0	4	4,000	8	0	4	4,000
Industry Support		0	0	0	0	22	0	11	5,673	22	0	11	5,673
Next Generation Case Management System		0	0	0	9,048	0	0	0	0	0	0	0	9,048
<b>Total Program Increases</b>		<b>200</b>	<b>0</b>	<b>100</b>	<b>44,633</b>	<b>30</b>	<b>0</b>	<b>15</b>	<b>9,673</b>	<b>230</b>	<b>0</b>	<b>115</b>	<b>54,306</b>

Program Offsets	Location of Description by Program Activity	Investigative Support Services				Law Enforcement Operations				Total Offsets			
		Direct Pos.	Agt./Atty.	Est. FTE	Amount	Direct Pos.	Agt./Atty.	Est. FTE	Amount	Direct Pos.	Agt./Atty.	Est. FTE	Amount
No Program Offsets													
<b>Total Program Offsets</b>													

**Resources by Department of Justice Strategic Goal and Objective**  
 Bureau of Alcohol, Tobacco, Firearms, and Explosives  
 Salaries and Expenses  
 (Dollars in Thousands)

Strategic Goal and Strategic Objective	FY 2015 Appropriation Enacted		FY 2016 Enacted		FY 2017 Current Services		FY 2017 Increases		FY 2017 Offsets		FY 2017 Total Request	
	Direct & Reimb FTE	Direct Amount	Direct & Reimb FTE	Direct Amount	Direct & Reimb FTE	Direct Amount	Direct & Reimb FTE	Direct Amount	Direct & Reimb FTE	Direct Amount	Direct & Reimb FTE	Direct Amount
<b>Goal 1 Prevent Terrorism and Promote the Nation's Security Consistent with the Rule of Law</b>												
1.1 Prevent, disrupt, and defeat terrorist operations before they occur by integrating intelligence and law enforcement efforts to achieve a coordinated response to terrorist threats.	1,559	384,320	1,626	396,800	1,649	400,562	37	17,378	0	0	1,686	417,940
<b>Subtotal, Goal 1</b>	<b>1,559</b>	<b>384,320</b>	<b>1,626</b>	<b>396,800</b>	<b>1,649</b>	<b>400,562</b>	<b>37</b>	<b>17,378</b>	<b>0</b>	<b>0</b>	<b>1,686</b>	<b>417,940</b>
<b>Goal 2 Prevent crime, protect the rights of the American people, and enforce federal law</b>												
2.1 Combat the threat, incidence, and prevalence of violent crime by leveraging strategic partnerships to investigate, arrest, and prosecute violent offenders and illegal firearms traffickers.	3,314	816,680	3,454	843,200	3,504	851,195	78	36,928	0	0	3,582	888,123
<b>Subtotal, Goal 2</b>	<b>3,314</b>	<b>816,680</b>	<b>3,454</b>	<b>843,200</b>	<b>3,504</b>	<b>851,195</b>	<b>78</b>	<b>36,928</b>	<b>0</b>	<b>0</b>	<b>3,582</b>	<b>888,123</b>
<b>TOTAL</b>	<b>4,873</b>	<b>1,201,000</b>	<b>5,080</b>	<b>1,240,000</b>	<b>5,153</b>	<b>1,251,757</b>	<b>115</b>	<b>54,306</b>	<b>0</b>	<b>0</b>	<b>5,268</b>	<b>1,306,063</b>

## Justifications for Technical and Base Adjustments

Bureau of Alcohol, Tobacco, Firearms, and Explosives

Salaries and Expenses

(Dollars in Thousands)

	Direct Pos.	Estimate FTE	Amount
<b>Pay and Benefits</b>			
<p>1 <u>2017 Pay Raise - 1.6%</u>                      This request provides for a proposed 1.6 percent pay raise to be effective in January of 2017. The amount requested, \$12,613,000, represents the pay amounts for 3/4 of the fiscal year plus appropriate benefits (\$9,334,000 for pay and \$3,279,000 for benefits.)</p>	0	0	12,613
<p>2 <u>Annualization of 2016 Pay Raise</u>                      This pay annualization represents first quarter amounts (October through December) of the 2016 pay increase of 1.3% included in the 2016 President's Budget. The amount requested \$5,645,000, represents the pay amounts for 1/4 of the fiscal year plus appropriate benefits (\$4,177,000 for pay and \$1,468,000 for benefits).</p>	0	0	5,645
<p>3 <u>Annualization of 2016 Positions</u>                      Annualization of positions approved in FY 2016</p>	0	73	3,350
<p>4 <u>Changes in Compensable Days</u>                      The decreased cost for two compensable days in FY 2017 compared to FY 2016 is calculated by dividing the FY 2016 estimated personnel compensation \$562,878,000 and applicable benefits \$208,188,000 by 262 compensable days is -\$5,886,000.</p>	0	0	-5,886
<p>5 <u>Employees Compensation Fund</u>                      The \$309,000 request reflects anticipated changes in payments to the Department of Labor for injury benefits under the Federal Employee Compensation Act.</p>	0	0	309
<p>6 <u>Health Insurance</u>                      Effective January 2017, the component's contribution to Federal employees' health insurance increases by 3%. Applied against the 2016 estimate of \$46,967,000, the additional amount required is \$1,409,000.</p>	0	0	1,409

### Justifications for Technical and Base Adjustments

Bureau of Alcohol, Tobacco, Firearms, and Explosives

Salaries and Expenses

(Dollars in Thousands)

	Direct Pos.	Estimate FTE	Amount
<p><b>7 Retirement</b></p> <p>Agency retirement contributions increase as employees under CSRS retire and are replaced by FERS employees. Based on U.S. Department of Justice Agency estimates, we project that the DOJ workforce will convert from CSRS to FERS at a rate of 0.8 percent per year, for both LEO and Non-LEO, based on past 5 years of DOJ retirement data. The requested increase of \$398,000 is necessary to meet our increased retirement obligations as a result of this conversion.</p>	0	0	398
<b>Subtotal, Pay and Benefits</b>	<b>0</b>	<b>73</b>	<b>17,838</b>
<b>Domestic Rent and Facilities</b>			
<p><b>1 GSA Rent</b></p> <p>GSA will continue to charge rental rates that approximate those charged to commercial tenants for equivalent space and related services. The requested ATB is required to meet our commitment to GSA. The costs associated with GSA rent were derived through the use of an automated system, which uses the latest inventory data, including rate increases to be effective FY 2017 for each building currently occupied by Department of Justice components, as well as the costs of new space to be occupied. GSA provides data on the rate increases.</p>	0	0	-6,284
<p><b>2 Guard Service</b></p> <p>This includes Department of Homeland Security (DHS) Federal Protective Service charges, Justice Protective Service charges and other security services across the country. The requested increase of \$370,000 is required to meet these commitments.</p>	0	0	370
<b>Subtotal, Domestic Rent and Facilities</b>	<b>0</b>	<b>0</b>	<b>-5,914</b>

**Justifications for Technical and Base Adjustments**  
 Bureau of Alcohol, Tobacco, Firearms, and Explosives  
 Salaries and Expenses  
 (Dollars in Thousands)

	Direct Pos.	Estimate FTE	Amount
<b>Foreign Expenses</b>			
1 <u>Capital Security Cost Sharing</u> Per P.L. 108-447 and subsequent acts, "all agencies with personnel overseas subject to chief of mission authority...shall participate and provide funding in advance for their share of costs of providing new, safe, secure U.S. diplomatic facilities, without offsets, on the basis of the total overseas presence of each agency as determined by the Secretary of State." Originally authorized for FY 2000-2004, the program has been extended annually by OMB and Congress and has also been expanded beyond new embassy construction to include maintenance and renovation costs of the new facilities. For the purpose of this program, State's personnel totals for DOJ include current and projected staffing. The estimated cost to the Department, as provided by State, for FY 2016 is \$146,558,944. The ATF currently has 20 positions overseas, and a reduction of \$167,000 is requested for this account.	0	0	-167
<b>Subtotal, Foreign Expenses</b>	<b>0</b>	<b>0</b>	<b>-167</b>
<b>TOTAL DIRECT TECHNICAL and BASE ADJUSTMENTS</b>	<b>0</b>	<b>73</b>	<b>11,757</b>



**Crosswalk of 2015 Availability**  
 Bureau of Alcohol, Tobacco, Firearms, and Explosives  
 Salaries and Expenses  
 (Dollars in Thousands)

Program Activity	FY 2015 Appropriation Enacted			Reprogramming/Transfers			Carryover	Recoveries/Refunds	FY 2015 Availability		
	Direct Pos.	Actual FTE	Amount	Direct Pos.	Actual FTE	Amount	Amount	Amount	Direct Pos.	Actual FTE	Amount
Law Enforcement Operations	4,305	4,068	1,013,524	0	0	204,058	12,723	1,198	4,305	4,068	1,231,503
Investigative Support Services	796	753	187,476	0	0	37,746	2,547	240	796	753	228,009
<b>Total Direct</b>	<b>5,101</b>	<b>4,821</b>	<b>1,201,000</b>	<b>0</b>	<b>0</b>	<b>241,804</b>	<b>15,270</b>	<b>1,438</b>	<b>5,101</b>	<b>4,821</b>	<b>1,459,512</b>
Balance Rescission			-3,200			0	0	0			-3,200
Total Direct with Rescission			1,197,800			241,804	15,270	1,438			1,456,312
Reimbursable FTE		52			0					52	
Total Direct and Reimb. FTE		4,873			0					4,873	
Other FTE:											
LEAP FTE		608			0					608	
Overtime		38			0					38	
Grand Total, FTE		5,519			0					5,519	

**Reprogramming/Transfers:**

ATF transfer of \$9.5M from prior year S&E accounts to the No-Year account; transfer in of Spectrum AWS3 funding \$232.3M; transfer in of \$0.310M from ONDCP 11 15/16 1070; transfer out to ONDCP 11 14/15 1070 and transfer out of \$0.289M to DOJ JIST 15 X 0134.

**Carryover:**

Carryover funding was \$13.208M from ATF's No-Year Account and \$2.062 M from the Spectrum Relocation Fund AWS-1.

**Recoveries/Refunds:**

Actual Recoveries are \$1.438M from ATF's No-Year Account.

**Crosswalk of 2016 Availability**  
 Bureau of Alcohol, Tobacco, Firearms, and Explosives  
 Salaries and Expenses  
 (Dollars in Thousands)

Program Activity	FY 2016 Enacted			Reprogramming/Transfers			Carryover	Recoveries/Refunds	FY 2016 Availability		
	Direct Pos.	Est. FTE	Amount	Direct Pos.	Est. FTE	Amount	Amount	Amount	Direct Pos.	Est. FTE	Amount
Law Enforcement Operations	4,250	4,189	1,033,168	0	0	6,249	208,704	832	4,250	4,189	1,248,953
Investigative Support Services	851	839	206,832	0	0	1,251	41,781	168	851	839	250,032
<b>Total Direct</b>	<b>5,101</b>	<b>5,028</b>	<b>1,240,000</b>	<b>0</b>	<b>0</b>	<b>7,500</b>	<b>250,485</b>	<b>1,000</b>	<b>5,101</b>	<b>5,028</b>	<b>1,498,985</b>
Balance Rescission			0			0	0	0			0
Total Direct with Rescission			1,240,000			7,500	250,485	1,000			1,498,985
Reimbursable FTE		52			0					52	
Total Direct and Reimb. FTE		5,080			0					5,080	
Other FTE:											
LEAP FTE		608			0					608	
Overtime		38			0					38	
Grand Total, FTE		5,726			0					5,726	

**Reprogramming/Transfers:**

ATF anticipates to transfer \$7.5M from prior year S&E accounts to the New-Year account.

**Carryover:**

Carryover funding was \$18.148M from ATF's No-Year Account and \$232.336M from the Spectrum Relocation Fund (AWS3).

**Recoveries/Refunds:**

ATF anticipates \$1M in recoveries from No-Year Account.

**Summary of Reimbursable Resources**  
 Bureau of Alcohol, Tobacco, Firearms, and Explosives  
 Salaries and Expenses  
 (Dollars in Thousands)

Collections by Source	2015 Actual			2016 Estimate			2017 Request			Increase/Decrease		
	Reimb. Pos.	Reimb. FTE	Amount	Reimb. Pos.	Reimb. FTE	Amount	Reimb. Pos.	Reimb. FTE	Amount	Reimb. Pos.	Reimb. FTE	Amount
All Other Sources	2	2	22,936	2	2	48,084	2	2	47,990	0	0	-94
Asset Forfeiture Fund	0	0	52,499	0	0	53,047	0	0	53,047	0	0	0
Organized Crime Drug Enforcement Task Force	50	50	10,721	50	50	10,869	50	50	10,963	0	0	94
<b>Budgetary Resources</b>	<b>52</b>	<b>52</b>	<b>86,156</b>	<b>52</b>	<b>52</b>	<b>112,000</b>	<b>52</b>	<b>52</b>	<b>112,000</b>	<b>0</b>	<b>0</b>	<b>0</b>

Obligations by Program Activity	2015 Actual			2016 Estimate			2017 Request			Increase/Decrease		
	Reimb. Pos.	Reimb. FTE	Amount	Reimb. Pos.	Reimb. FTE	Amount	Reimb. Pos.	Reimb. FTE	Amount	Reimb. Pos.	Reimb. FTE	Amount
Law Enforcement Operations	52	52	72,707	52	52	93,318	52	52	93,318	0	0	0
Investigative Support Services	0	0	13,449	0	0	18,682	0	0	18,682	0	0	0
<b>Budgetary Resources</b>	<b>52</b>	<b>52</b>	<b>86,156</b>	<b>52</b>	<b>52</b>	<b>112,000</b>	<b>52</b>	<b>52</b>	<b>112,000</b>	<b>0</b>	<b>0</b>	<b>0</b>

**Detail of Permanent Positions by Category**  
 Bureau of Alcohol, Tobacco, Firearms, and Explosives  
 Salaries and Expenses  
 (Dollars in Thousands)

Category	FY 2015 Enacted		FY 2016 Enacted		FY 2017 Request				
	Direct Pos.	Reimb. Pos.	Direct Pos.	Reimb. Pos.	ATBs	Program Increases	Program Offsets	Total Direct Pos.	Total Reimb. Pos.
Miscellaneous Operations (001-099)	524	1	524	1	0	22	0	546	1
Security Specialists (080)	26	0	26	0	0	0	0	26	0
Intelligence Series (132)	180	0	180	0	0	0	0	180	0
Personnel Management (0200-0260)	61	0	61	0	0	0	0	61	0
Clerical and Office Services (0300-0399)	545	0	545	0	0	8	0	553	0
Accounting and Budget (500-599)	125	0	125	0	0	0	0	125	0
Paralegals / Other Law (900-998)	60	0	60	0	0	0	0	60	0
Attorneys (905)	81	0	81	0	0	0	0	81	0
Information & Arts (1000-1099)	38	0	38	0	0	0	0	38	0
Business & Industry (1100-1199)	34	0	34	0	0	0	0	34	0
Equipment/Facilities Services (1600-1699)	1	0	1	0	0	0	0	1	0
Investigation (1800-1899)	0	0	0	0	0	0	0	0	0
Inspection, Investigation, Enforcement Analyst(1801)	834	0	834	0	0	120	0	954	0
Misc. Inspectors/Investigative Assistants (1802)	35	0	35	0	0	0	0	35	0
Criminal Investigative Series (1811)	2,485	51	2,485	51	0	80	0	2,565	51
Supply Services (2000-2099)	16	0	16	0	0	0	0	16	0
Information Technology Mgmt (2210-2299)	56	0	56	0	0	0	0	56	0
<b>Total</b>	<b>5,101</b>	<b>52</b>	<b>5,101</b>	<b>52</b>	<b>0</b>	<b>230</b>	<b>0</b>	<b>5,331</b>	<b>52</b>
Headquarters Washington D.C.	709	1	709	1	0	0	0	709	1
US Fields	4,363	51	4,363	51	0	230	0	4,593	51
Foreign Field	29	0	29	0	0	0	0	29	0
<b>Total</b>	<b>5,101</b>	<b>52</b>	<b>5,101</b>	<b>52</b>	<b>0</b>	<b>230</b>	<b>0</b>	<b>5,331</b>	<b>52</b>

**Financial Analysis of Program Changes**  
 Bureau of Alcohol, Tobacco, Firearms, and Explosives  
 Salaries and Expenses  
 (Dollars in Thousands)

Grades	Law Enforcement Operations				Investigative Support Services				Total Program Changes	
	Program Increases		Program Decreases		Program Increases		Program Decreases		Direct Pos.	Amount
	Direct Pos.	Amount	Direct Pos.	Amount	Direct Pos.	Amount	Direct Pos.	Amount		
GS-9	200	0	0	0	30	0	0	0	230	0
<b>Total Positions and Annual Amount</b>	<b>200</b>	<b>0</b>	<b>0</b>	<b>0</b>	<b>30</b>	<b>0</b>	<b>0</b>	<b>0</b>	<b>230</b>	<b>0</b>
Lapse (-)	-100	6,000	0	0	-15	810	0	0	-115	6,810
11.5 - Other personnel compensation		0		0		0		0		0
<b>Total FTEs and Personnel Compensation</b>	<b>100</b>	<b>6,000</b>	<b>0</b>	<b>0</b>	<b>15</b>	<b>810</b>	<b>0</b>	<b>0</b>	<b>115</b>	<b>6,810</b>
12.1 - Civilian personnel benefits		2,286		0		256		0		2,542
21.0 - Transportation of Persons		658				0				658
22.0 - Transportation of things		31		0		4		0		35
23.2 - Rental payments to others		18		0		5		0		23
23.3 - Communications, utilities, and miscellaneous charges		1,014		0		57		0		1,071
24.0 - Printing and Reproduction		20				0				20
25.2 - Other services from non-federal sources		19,419		0		8,095		0		27,514
26.0 - Supplies and materials		1,869		0		41		0		1,910
31.0 - Equipment		13,996		0		405		0		14,401
<b>Total Program Change Requests</b>	<b>100</b>	<b>44,633</b>	<b>0</b>	<b>0</b>	<b>15</b>	<b>9,673</b>	<b>0</b>	<b>0</b>	<b>115</b>	<b>54,306</b>

**Summary of Requirements by Object Class**  
 Bureau of Alcohol, Tobacco, Firearms, and Explosives  
 Salaries and Expenses  
 (Dollars in Thousands)

Object Class	FY 2015 Actual		FY 2016 Enacted		FY 2017 Request		Increase/Decrease	
	Act. FTE	Amount	Direct FTE	Amount	Direct FTE	Amount	Direct FTE	Amount
11.1 - Full-time permanent	4,821	458,210	5,028	481,170	5,216	495,840	188	14,670
11.3 - Other than full-time permanent	0	18,899	0	16,311	0	17,285	0	974
11.5 - Other personnel compensation	646	67,830	646	73,399	646	79,942	0	6,543
<i>Overtime</i>	38	0	38	0	38	0	0	0
<i>Other Compensation</i>	608	0	608	0	608	0	0	0
11.8 - Special personal services payments	0	18	0	20	0	20	0	0
<b>Total</b>	<b>5,467</b>	<b>544,957</b>	<b>5,674</b>	<b>570,900</b>	<b>5,862</b>	<b>593,087</b>	<b>188</b>	<b>22,187</b>
<b>Other Object Classes</b>								
12.1 - Civilian personnel benefits		230,535		244,663		251,139	0	6,476
13.0 - Benefits for former personnel		17		15		15	0	0
21.0 - Travel and transportation of persons		27,456		28,100		28,585	0	485
22.0 - Transportation of things		1,035		1,200		1,220	0	20
23.1 - Rental payments to GSA		90,263		86,399		89,160	0	2,761
23.2 - Rental payments to others		1,342		695		695	0	0
23.3 - Communications, utilities, and miscellaneous charges		22,822		33,500		37,780	0	4,280
24.0 - Printing and reproduction		1,100		1,400		1,616	0	216
25.1 - Advisory and assistance services		23,469		16,500		16,830	0	330
25.2 - Other services from non-federal sources		143,912		162,900		178,881	0	15,981
25.3 - Other goods and services from federal sources		6,933		7,188		7,260	0	72
25.4 - Operation and maintenance of facilities		1,334		1,280		1,293	0	13
25.7 - Operation and maintenance of equipment		52,102		49,800		55,217	0	5,417
26.0 - Supplies and materials		21,468		29,400		29,561	0	161
31.0 - Equipment		26,537		49,400		61,291	0	11,891
32.0 - Land and structures		8,801		9,000		2,525	0	-6,475
42.0 - Insurance claims and indemnities		323		900		500	0	-400
<b>Total Obligations</b>		<b>1,204,406</b>		<b>1,293,240</b>		<b>1,356,655</b>	<b>0</b>	<b>63,415</b>
<b>Net of:</b>								
Unobligated Balance, Start-of-Year		-15,270		-250,485		-206,245	0	44,240
Transfers/Reprogramming		-241,804		-7,500		-7,500	0	0
Recoveries/Refunds		-1,438		-1,000		-1,000	0	0
Balance Rescission		3,200		0		0	0	0
Unobligated End-of-Year, Available		250,485		206,245		164,653	0	-41,592
Unobligated End-of-Year, Expiring		-1,172		-500		-500	0	0
<b>Total Direct Requirements</b>		<b>1,198,407</b>		<b>1,240,000</b>		<b>1,306,063</b>		<b>66,063</b>
Reimbursable FTE								
Full-Time Permanent	52		52		52		0	0

**Status of Congressionally Requested Studies, Reports, and Evaluations**

Bureau of Alcohol, Tobacco, Firearms, and Explosives

1. The Senate Report associated with the FY 2016 Consolidated Appropriations Act directs ATF to submit a report on enhancements to staffing and course offerings at the National Center for Explosives Training and Research (NCETR). Target response to Committee April 2016.
2. The Senate Report associated with the FY 2016 Consolidated Appropriations Act directs ATF to submit an annual report on U.S. and Mexico firearms trafficking and trace data. Target response to Committee April 2017.