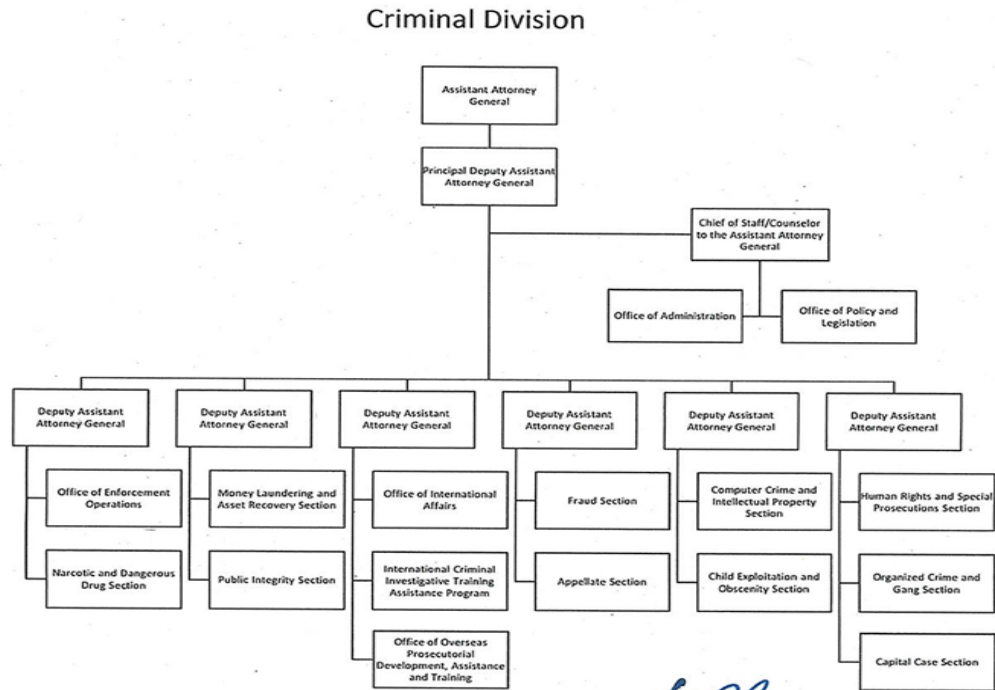


# A: Organizational Chart



Approved by: W.P. Barr Date: July 24, 2019

WILLIAM P. BARR  
Attorney General

## Summary of Requirements

Criminal Division  
Salaries and Expenses  
(Dollars in Thousands)

	FY 2022 Request		
	Positions	Estimate FTE	Amount
<b>2020 Enacted 1/</b>	<b>752</b>	<b>628</b>	<b>195,617</b>
<b>Total 2020 Enacted</b>	<b>752</b>	<b>628</b>	<b>195,617</b>
<b>2021 Enacted</b>	<b>752</b>	<b>752</b>	<b>197,254</b>
<b>Technical Adjustments</b>			
Technical Adjustment - Start Point	0	0	1,500
<b>Total Technical Adjustments</b>	<b>0</b>	<b>0</b>	<b>1,500</b>
<b>Base Adjustments</b>			
Pay and Benefits	0	0	3,448
Domestic Rent and Facilities	0	0	2,739
Other Adjustments	0	0	24
Foreign Expenses	0	0	108
<b>Total Base Adjustments</b>	<b>0</b>	<b>0</b>	<b>6,319</b>
<b>Total Technical and Base Adjustments</b>	<b>0</b>	<b>0</b>	<b>7,819</b>
<b>2022 Current Services</b>	<b>752</b>	<b>752</b>	<b>205,073</b>
<b>Program Changes</b>			
Increases:			
COVID-Related Fraud	20	10	10,100
Subtotal, Increases	20	10	10,100
<b>Total Program Changes</b>	<b>20</b>	<b>10</b>	<b>10,100</b>
<b>2022 Total Request</b>	<b>772</b>	<b>762</b>	<b>215,173</b>
2021 - 2022 Total Change	20	10	17,919

<sup>1/</sup> FY 2020 FTE is actual

### Summary of Requirements

Criminal Division  
Salaries and Expenses  
(Dollars in Thousands)

Program Activity	FY 2020 Enacted			FY 2021 Enacted			FY 2022 Technical and Base Adjustments			FY 2022 Current Services		
	Positions	Actual FTE	Amount	Positions	Est. FTE	Amount	Positions	Est. FTE	Amount	Positions	Est. FTE	Amount
Enforcing Federal Criminal Laws	752	628	195,617	752	752	197,254	0	0	7,819	752	752	205,073
<b>Total Direct</b>	<b>752</b>	<b>628</b>	<b>195,617</b>	<b>752</b>	<b>752</b>	<b>197,254</b>	<b>0</b>	<b>0</b>	<b>7,819</b>	<b>752</b>	<b>752</b>	<b>205,073</b>
Balance Rescission			0			0			0			0
<b>Total Direct with Rescission</b>			<b>195,617</b>			<b>197,254</b>			<b>7,819</b>			<b>205,073</b>
Reimbursable FTE		112			112			43			155	
<b>Total Direct and Reimb. FTE</b>		<b>740</b>			<b>864</b>			<b>43</b>			<b>907</b>	
Other FTE:												
LEAP		0			0			0			0	
Overtime		0			0			0			0	
<b>Grand Total, FTE</b>		<b>740</b>			<b>864</b>			<b>43</b>			<b>907</b>	
<i>Sub-Allotments and Direct Collections FTE</i>		235			290			0			290	

Program Activity	2022 Increases			2022 Offsets			2022 Request		
	Positions	Est. FTE	Amount	Positions	Est. FTE	Amount	Positions	Est. FTE	Amount
Enforcing Federal Criminal Laws	20	10	10,100	0	0	0	772	762	215,173
<b>Total Direct</b>	<b>20</b>	<b>10</b>	<b>10,100</b>	<b>0</b>	<b>0</b>	<b>0</b>	<b>772</b>	<b>762</b>	<b>215,173</b>
Balance Rescission			0			0			0
<b>Total Direct with Rescission</b>			<b>10,100</b>			<b>0</b>			<b>215,173</b>
Reimbursable FTE		0			0			155	
<b>Total Direct and Reimb. FTE</b>		<b>10</b>			<b>0</b>			<b>917</b>	
Other FTE:									
LEAP		0			0			0	
Overtime		0			0			0	
<b>Grand Total, FTE</b>		<b>10</b>			<b>0</b>			<b>917</b>	
<i>Sub-Allotments and Direct Collections FTE</i>		0			0			290	

**FY 2022 Program Increases/Offsets by Decision Unit**

Criminal Division  
 Salaries and Expenses  
 (Dollars in Thousands)

Program Increases	Location of Description by Program Activity	Enforcing Federal Criminal Laws				Total Increases			
		Positions	Agt./Atty.	Est. FTE	Amount	Positions	Agt./Atty.	Est. FTE	Amount
COVID-Related Fraud		20	20	10	10,100	20	20	10	10,100
<b>Total Program Increases</b>		<b>20</b>	<b>20</b>	<b>10</b>	<b>10,100</b>	<b>20</b>	<b>20</b>	<b>10</b>	<b>10,100</b>

Program Offsets	Location of Description by Program Activity	Enforcing Federal Criminal Laws				Total Offsets			
		Positions	Agt./Atty.	Est. FTE	Amount	Positions	Agt./Atty.	Est. FTE	Amount
No Program Offsets									
<b>Total Program Offsets</b>									

**Resources by Department of Justice Strategic Goal and Objective**

Criminal Division  
Salaries and Expenses  
(Dollars in Thousands)

Strategic Goal and Strategic Objective	FY 2020 Enacted			FY 2021 Enacted			FY 2022 Current Services		FY 2022 Increases		FY 2022 Offsets		FY 2022 Total Request		
	Direct & Reimb FTE	SubAllot /Dir Coll FTE	Direct Amount	Direct & Reimb FTE	SubAllot /Dir Coll FTE	Direct Amount	Direct & Reimb FTE	Direct Amount	Direct & Reimb FTE	Direct Amount	Direct & Reimb FTE	Direct Amount	Direct & Reimb FTE	SubAllot /Dir Coll FTE	Direct Amount
<b>Goal 1 Enhance National Security and Counter the Threat of Terrorism</b>															
1.1 Disrupt and defeat terrorist operations	71	21	12,378	84	26	13,966	0	0	0	0	0	0	0	0	0
1.2 Combat cyber-based threats and attacks	84	21	23,972	97	17	24,343	0	0	0	0	0	0	0	0	0
1.3 Combat unauthorized disclosures, insider threats, and hostile intelligence activities	22	6	6,585	21	7	5,420	0	0	0	0	0	0	0	0	0
<b>Subtotal, Goal 1</b>	<b>177</b>	<b>48</b>	<b>42,935</b>	<b>202</b>	<b>50</b>	<b>43,729</b>	<b>0</b>	<b>0</b>	<b>0</b>	<b>0</b>	<b>0</b>	<b>0</b>	<b>0</b>	<b>0</b>	<b>0</b>
<b>Goal 2 Secure the Borders and Enhance Immigration Enforcement and Adjudication</b>															
2.1 Prioritize criminal immigration enforcement	27	13	8,475	33	15	8,541	0	0	0	0	0	0	0	0	0
2.2 Ensure an immigration system that respects the rule of law, protects the safety of U.S. Citizens and serves the national interest	15	0	4,494	16	0	4,174	0	0	0	0	0	0	0	0	0
<b>Subtotal, Goal 2</b>	<b>42</b>	<b>13</b>	<b>12,969</b>	<b>49</b>	<b>15</b>	<b>12,715</b>	<b>0</b>	<b>0</b>	<b>0</b>	<b>0</b>	<b>0</b>	<b>0</b>	<b>0</b>	<b>0</b>	<b>0</b>
<b>Goal 3 Reduce Violent Crime and Promote Public Safety</b>															
3.1 Combat violent crime, promote safe communities, and uphold the rights of victims of crime	180	31	43,344	200	31	42,984	0	0	0	0	0	0	0	0	0
3.2 Disrupt and dismantle drug trafficking organizations to curb opioid and other illicit drug use in our nation	153	53	45,209	199	82	48,378	0	0	0	0	0	0	0	0	0
<b>Subtotal, Goal 3</b>	<b>333</b>	<b>84</b>	<b>88,553</b>	<b>399</b>	<b>113</b>	<b>91,362</b>	<b>0</b>	<b>0</b>	<b>0</b>	<b>0</b>	<b>0</b>	<b>0</b>	<b>0</b>	<b>0</b>	<b>0</b>
<b>Goal 4 Promote Rule of Law, Integrity, and Good Government</b>															
4.1 Uphold the rule of law and integrity in the proper administration of justice	167	88	44,406	193	110	44,385	0	0	0	0	0	0	0	0	0
4.2 Defend first amendments rights to exercise religion and free speech	8	2	2,450	11	2	2,510	0	0	0	0	0	0	0	0	0
4.4 Achieve management excellence	13	0	4,304	10	0	2,553	0	0	0	0	0	0	0	0	0
<b>Subtotal, Goal 4</b>	<b>188</b>	<b>90</b>	<b>51,160</b>	<b>214</b>	<b>112</b>	<b>49,448</b>	<b>0</b>	<b>0</b>	<b>0</b>	<b>0</b>	<b>0</b>	<b>0</b>	<b>0</b>	<b>0</b>	<b>0</b>
<b>TOTAL</b>	<b>740</b>	<b>235</b>	<b>195,617</b>	<b>864</b>	<b>290</b>	<b>197,254</b>	<b>0</b>	<b>0</b>	<b>0</b>	<b>0</b>	<b>0</b>	<b>0</b>	<b>0</b>	<b>0</b>	<b>0</b>

### Justifications for Technical and Base Adjustments

Criminal Division  
Salaries and Expenses  
(Dollars in Thousands)

	Positions	Estimate FTE	Amount
<b>Technical Adjustments</b>			
1 <b>Technical Adjustment - Start Point</b> Provides a \$1,500,000 base adjustment that addresses an administrative savings in the Criminal Division's FY 2021 enactment.	0	0	1,500
<b>Subtotal, Technical Adjustments</b>	<b>0</b>	<b>0</b>	<b>1,500</b>
<b>Pay and Benefits</b>			
1 <u>2022 Pay Raise - 2.7%</u> This request provides for a proposed 2.7 percent pay raise to be effective in January of 2022. The amount requested, \$2,076,000, represents the pay amounts for 3/4 of the fiscal year plus appropriate benefits (\$1,619,280 for pay and \$456,720 for benefits.)	0	0	2,076
2 <u>Annualization of 2021 Pay Raise</u> This pay annualization represents first quarter amounts (October through December) of the 2021 pay increase of 1.0%. The amount requested, \$270,000, represents the pay amounts for 1/4 of the fiscal year plus appropriate benefits (\$208,333 for pay and \$61,667 for benefits.)	0	0	270
3 <u>Employees Compensation Fund</u> The \$6,000 decrease reflects anticipated changes in payments to the Department of Labor for injury benefits under the Federal Employee Compensation Act.	0	0	-6
4 <u>FERS Rate Increase</u> Effective October 1, 2021 (FY 2022), the new agency contribution rates of 18.4% (an increase of the prior rate of 17.3%) and 37.6% for law enforcement personnel (an increase of the prior rate of 35.8%), The amount requested, \$944,000, represents the funds needed to cover this increase.	0	0	944
5 <u>Health Insurance</u> Effective January 2022, the component's contribution to Federal employees' health insurance increases by 3.7 percent. Applied against the 2021 estimate of \$5,391,000, the additional amount required is \$201,000.	0	0	201
6 <u>Retirement - CSRS to FERS Conversion</u> Agency retirement contributions increase as employees under CSRS retire and are replaced by FERS employees. Based on U.S. Department of Justice Agency estimates, we project that the DOJ workforce will convert from CSRS to FERS at a rate of 0.8 percent per year, for both LEO and Non-LEO, based on the past 5 years of DOJ retirement data. The requested increase of \$6,000 is necessary to meet our increased retirement obligations as a result of this conversion.	0	0	6
7 <u>Retirement - FERS/FRAE Conversion Savings</u>	0	0	-43

E. Justifications for Technical and Base Adjustments

<p>Agency retirement contributions will decrease as new FERS RAE employees are hired and replace CSRS and regular FERS employees. Based on OMB Circular A-11 FERS RAE withholding rates, we project agency savings from employees hired after December 31, 2012 of 1.8 percent of salaries for Non-LEO employees and 1.7 percent of salaries for LEO employees in FY 2021, for a savings of \$43,000.</p> <p style="text-align: right;"><b>Subtotal, Pay and Benefits</b></p>	<p style="text-align: center;">0</p>	<p style="text-align: center;">0</p>	<p style="text-align: center;"><b>3,448</b></p>
<p><b>Domestic Rent and Facilities</b></p> <p>1 <u>GSA Rent</u> GSA will continue to charge rental rates that approximate those charged to commercial tenants for equivalent space and related services. The requested increase of \$1,439,000, is required to meet our commitment to GSA. The costs associated with GSA rent were derived through the use of an automated system, which uses the latest inventory data, including rate increases to be effective FY 2021 for each building currently occupied by Department of Justice components, as well as the costs of new space to be occupied.</p> <p>2 <u>Guard Service</u> This includes Department of Homeland Security (DHS) Federal Protective Service charges, Justice Protective Service charges and other security services across the country. The requested increase of \$333,000 is required to meet these commitments.</p> <p style="text-align: right;"><b>Subtotal, Domestic Rent and Facilities</b></p>	<p style="text-align: center;">0</p> <p style="text-align: center;">0</p> <p style="text-align: center;">0</p>	<p style="text-align: center;">0</p> <p style="text-align: center;">0</p> <p style="text-align: center;">0</p>	<p style="text-align: center;">2,406</p> <p style="text-align: center;">333</p> <p style="text-align: center;"><b>2,739</b></p>
<p><b>Other Adjustments</b></p> <p>1 <u>Security Investigations</u> The \$24,000 increase reflects payments to the Office of Personnel Management for security reinvestigations for employees requiring security clearances.</p> <p style="text-align: right;"><b>Subtotal, Other Adjustments</b></p>	<p style="text-align: center;">0</p> <p style="text-align: center;">0</p> <p style="text-align: center;">0</p>	<p style="text-align: center;">0</p> <p style="text-align: center;">0</p> <p style="text-align: center;">0</p>	<p style="text-align: center;">24</p> <p style="text-align: center;"><b>24</b></p>
<p><b>Foreign Expenses</b></p> <p>1 <u>Capital Security Cost Sharing</u> Per P.L. 108-447 and subsequent acts, all agencies with personnel overseas subject to chief of mission authority shall participate and provide funding in advance for their share of costs of providing new, safe, secure U.S. diplomatic facilities, without offsets, on the basis of the total overseas presence of each agency as determined by the Secretary of State. Originally authorized for FY 2000-2004, the program has been extended annually by OMB and Congress and has also been expanded beyond new embassy construction to include maintenance and renovation costs of the new facilities. For the purpose of this program, State's personnel totals for DOJ include current and projected staffing. The estimated cost to the Department, as provided by State, for FY 2022 is \$113,002,827. CRM currently has 13 positions overseas, and funding of \$51,000 is requested for this account.</p> <p>2 <u>ICASS</u> The Department of State charges agencies for administrative support provided to staff based overseas. Charges are determined by a cost distribution system. The FY 2022 request is based on the projected FY 2020 bill for post invoices and other ICASS costs. \$57,000 reflects the change in cost to support existing staffing levels.</p>	<p style="text-align: center;">0</p> <p style="text-align: center;">0</p> <p style="text-align: center;">0</p>	<p style="text-align: center;">0</p> <p style="text-align: center;">0</p> <p style="text-align: center;">0</p>	<p style="text-align: center;">51</p> <p style="text-align: center;">57</p>

E. Justifications for Technical and Base Adjustments

	<b>Subtotal, Foreign Expenses</b>	<b>0</b>	<b>0</b>	<b>108</b>
<b>TOTAL DIRECT TECHNICAL and BASE ADJUSTMENTS</b>		<b>0</b>	<b>0</b>	<b>7,819</b>
<b>ATB Reimbursable FTE Changes</b>				
1	ATB Reimbursable Position/FTE Adjustment	0	43	0
	ATB Reimbursable Position/FTE Adjustment			
	<b>Subtotal, ATB Reimbursable FTE Changes</b>	<b>0</b>	<b>43</b>	<b>0</b>



**Crosswalk of 2020 Availability**

Criminal Division  
Salaries and Expenses  
(Dollars in Thousands)

Program Activity	FY 2020 Enacted			Reprogramming/Transfers			Carryover	Recoveries/ Refunds	FY 2020 Availability		
	Position s	Actual FTE	Amount	Position s	Actual FTE	Amount	Amount	Amount	Position s	Actual FTE	Amount
Enforcing Federal Criminal Laws	752	628	195,617	0	0	3,443	15,337	19,580	752	628	233,977
<b>Total Direct</b>	<b>752</b>	<b>628</b>	<b>195,617</b>	<b>0</b>	<b>0</b>	<b>3,443</b>	<b>15,337</b>	<b>19,580</b>	<b>752</b>	<b>628</b>	<b>233,977</b>
Balance Rescission			0			0	0	0			0
Total Direct with Rescission			195,617			3,443	15,337	19,580			233,977
Reimbursable FTE		112			0					112	
Total Direct and Reimb. FTE		740			0					740	
Other FTE:											
LEAP FTE		0			0					0	
Overtime		0			0					0	
Grand Total, FTE		740			0					740	
<i>Sub-Allotments and Direct Collections FTE</i>		235								235	

**Reprogramming/Transfers:** Funding totaling \$3,600,000 was transferred from GLA's prior year unobligated balances to the Criminal Division's ALS account and \$157,000 was deducted from this for a departmental reprogramming from travel savings.

**Carryover:** Funds carried over into FY 2020 from GLA's FY 2019 no-year account total \$15,337,000. This includes \$5,189,000 in no-year MLAT funds, \$2,001,000 in no-year ALS funds, and \$8,147,000 in discretionary two-year Healthcare Fraud funds.

**Recoveries/Refunds:** The Criminal Division received \$19,580,000 in no-year and multi-year funding. This includes \$92,000 in no-year MLAT funds, \$329,000 in no-year ALS funds, \$94,000 in discretionary Direction Collections FY19/FY20 Healthcare Fraud funds, and \$19,065,000 in discretionary Direct Collections FY20/FY21 Healthcare Fraud funds.

**Crosswalk of 2021 Availability**

Criminal Division  
Salaries and Expenses  
(Dollars in Thousands)

Program Activity	FY 2021 Enacted			Reprogramming/Transfers			Carryover	Recoveries/ Refunds	FY 2021 Availability		
	Position s	Est. FTE	Amount	Position s	Est. FTE	Amount	Amount	Amount	Position s	Est. FTE	Amount
Enforcing Federal Criminal Laws	752	752	197,254	0	0	2,500	10,802	19,212	752	752	229,768
<b>Total Direct</b>	<b>752</b>	<b>752</b>	<b>197,254</b>	<b>0</b>	<b>0</b>	<b>2,500</b>	<b>10,802</b>	<b>19,212</b>	<b>752</b>	<b>752</b>	<b>229,768</b>
Balance Rescission			0			0	0	0			0
Total Direct with Rescission			197,254			2,500	10,802	19,212			229,768
Reimbursable FTE		112			0					112	
Total Direct and Reimb. FTE		864			0					864	
Other FTE:											
LEAP FTE		0			0					0	
Overtime		0			0					0	
Grand Total, FTE		864			0					864	
<i>Sub-Allotments and Direct Collections FTE</i>		290								290	

**Reprogramming/Transfers:** Funding totaling \$2,500,000 was transferred from GLA's prior year unobligated balances to the Criminal Division's ALS account.

**Carryover:** Funds carried over into FY 2021 from GLA's FY 2020 no-year account total \$10,802,000. This includes \$2,381,000 in no-year MLAT funds, \$2,874,000 in no-year ALS funds, and \$5,547,000 in discretionary two-year Healthcare Fraud funds.

**Recoveries/Refunds:** The Criminal Division received \$19,212,000 in discretionary Direct Collections FY21/FY22 Healthcare Fraud funds.

### Summary of Reimbursable Resources

Criminal Division  
Salaries and Expenses  
(Dollars in Thousands)

Collections by Source	2020 Actual			2021 Estimate			2022 Request			Increase/Decrease		
	Reimb. Pos.	Reimb. FTE	Amount	Reimb. Pos.	Reimb. FTE	Amount	Reimb. Pos.	Reimb. FTE	Amount	Reimb. Pos.	Reimb. FTE	Amount
All Other Sources	9	7	20,690	9	9	22,000	15	15	22,000	6	6	0
Department of State	127	105	175,780	103	103	150,000	140	140	150,000	37	37	0
<b>Budgetary Resources</b>	<b>136</b>	<b>112</b>	<b>196,470</b>	<b>112</b>	<b>112</b>	<b>172,000</b>	<b>155</b>	<b>155</b>	<b>172,000</b>	<b>43</b>	<b>43</b>	<b>0</b>

Obligations by Program Activity	2020 Actual			2021 Estimate			2022 Request			Increase/Decrease		
	Reimb. Pos.	Reimb. FTE	Amount	Reimb. Pos.	Reimb. FTE	Amount	Reimb. Pos.	Reimb. FTE	Amount	Reimb. Pos.	Reimb. FTE	Amount
Enforcing Federal Criminal Laws	136	112	196,470	112	112	172,000	155	155	172,000	43	43	0
<b>Budgetary Resources</b>	<b>136</b>	<b>112</b>	<b>196,470</b>	<b>112</b>	<b>112</b>	<b>172,000</b>	<b>155</b>	<b>155</b>	<b>172,000</b>	<b>43</b>	<b>43</b>	<b>0</b>

**Summary of Sub-Allotments and Direct Collections Resources**

Criminal Division  
Salaries and Expenses  
(Dollars in Thousands)

Sub-Allotments and Direct Collections	2020 Actual			2021 Estimate			2022 Request			Increase/Decrease		
	SubAllot-Dir Coll Pos	SubAllot-Dir Coll FTE	Amount	SubAllot-Dir Coll Pos	SubAllot-Dir Coll FTE	Amount	SubAllot-Dir Coll Pos	SubAllot-Dir Coll FTE	Amount	SubAllot-Dir Coll Pos	SubAllot-Dir Coll FTE	Amount
ICDE	13	13	2,633	13	13	1,926	13	13	2,406	0	0	480
AFF	112	97	57,839	113	113	65,512	113	113	70,718	0	0	5,206
DEBT COLLECTION MANAGEMENT - 3%	52	46	37,382	54	54	40,116	54	54	45,968	0	0	5,852
HCFAC 1/	110	79	31,890	110	110	28,153	110	110	28,153	0	0	0
<b>Budgetary Resources</b>	<b>287</b>	<b>235</b>	<b>129,744</b>	<b>290</b>	<b>290</b>	<b>135,707</b>	<b>290</b>	<b>290</b>	<b>147,245</b>	<b>0</b>	<b>0</b>	<b>11,538</b>

Obligations by Program Activity	2020 Actual			2021 Estimate			2022 Request			Increase/Decrease		
	SubAllot-Dir Coll Pos	SubAllot-Dir Coll FTE	Amount	SubAllot-Dir Coll Pos	SubAllot-Dir Coll FTE	Amount	SubAllot-Dir Coll Pos	SubAllot-Dir Coll FTE	Amount	SubAllot-Dir Coll Pos	SubAllot-Dir Coll FTE	Amount
Enforcing Federal Criminal Laws	287	235	129,744	290	290	135,707	290	290	147,245	0	0	11,538
<b>Budgetary Resources</b>	<b>287</b>	<b>235</b>	<b>129,744</b>	<b>290</b>	<b>290</b>	<b>135,707</b>	<b>290</b>	<b>290</b>	<b>147,245</b>	<b>0</b>	<b>0</b>	<b>11,538</b>

<sup>1/</sup> The FY21 HCFAC amount reflects new funding only. The Division has \$37,855 in total FY21 HCFAC availability with carryover included.

**Detail of Permanent Positions by Category**

Criminal Division  
Salaries and Expenses  
(Dollars in Thousands)

Category	FY 2020 Enacted			FY 2021 Enacted			FY 2022 Request					
	Direct Pos.	Reimb. Pos.	SubAllot-Dir	Direct Pos.	Reimb. Pos.	SubAllot-Dir	ATBs	Program	Program	Total Direct	Total Reimb.	Total SubAllot-
			Coll Pos.			Coll Pos.		Increases	Offsets	Pos.	Pos.	Dir Coll Pos
Miscellaneous Operations (001-099)	1	0	0	1	0	1	0	0	0	1	0	1
Security Specialists (080)	6	0	1	6	0	0	0	0	0	6	0	0
Social Science, Psychology, Welfare (0100-0199)	7	0	5	7	0	5	0	0	0	7	0	5
Personnel Management (0200-0260)	21	2	2	21	1	2	0	0	0	21	1	2
Clerical and Office Services (0300-0399)	126	59	30	126	52	30	0	0	0	126	52	30
Accounting and Budget (500-599)	10	0	8	10	11	3	0	0	0	10	16	3
Paralegals / Other Law (900-998)	12	0	4	12	0	2	0	0	0	12	0	2
Attorneys (905)	458	62	228	458	40	238	0	20	0	478	78	238
Paralegal Specialist (0950)	72	0	4	72	0	3	0	0	0	72	0	3
Information & Arts (1000-1099)	2	0	0	2	1	0	0	0	0	2	1	0
Business & Industry (1100-1199)	4	2	3	4	0	3	0	0	0	4	0	3
Equipment/Facilities Services (1600-1699)	2	0	0	2	0	0	0	0	0	2	0	0
Education (1700-1799)	0	0	1	0	0	2	0	0	0	0	0	2
Investigation (1800-1899)	1	0	0	1	6	0	0	0	0	1	6	0
Inspection, Investigation, Enforcement Analyst(1801)	14	3	0	14	0	0	0	0	0	14	0	0
Transportation (2100-2199)	0	1	0	0	1	0	0	0	0	0	1	0
Information Technology Mgmt (2210-2299)	15	0	1	15	0	1	0	0	0	15	0	1
Bankruptcy Analyst	1	7	0	1	0	0	0	0	0	1	0	0
<b>Total</b>	<b>752</b>	<b>136</b>	<b>287</b>	<b>752</b>	<b>112</b>	<b>290</b>	<b>0</b>	<b>20</b>	<b>0</b>	<b>772</b>	<b>155</b>	<b>290</b>
Headquarters Washington D.C.	738	65	287	738	41	290	0	20	0	758	84	290
US Fields	0	0	0	0	0	0	0	0	0	0	0	0
Foreign Field	14	71	0	14	71	0	0	0	0	14	71	0
<b>Total</b>	<b>752</b>	<b>136</b>	<b>287</b>	<b>752</b>	<b>112</b>	<b>290</b>	<b>0</b>	<b>20</b>	<b>0</b>	<b>772</b>	<b>155</b>	<b>290</b>

### Financial Analysis of Program Changes

Criminal Division  
 Salaries and Expenses  
 (Dollars in Thousands)

Grades	Enforcing Federal Criminal Laws				Total Program Changes	
	Program Increases		Program Decreases		Positions	Amount
	Positions	Amount	Positions	Amount		
GS-14	20	4720	0	0	20	4720
<b>Total Positions and Annual Amount</b>	<b>20</b>	<b>4,720</b>	<b>0</b>	<b>0</b>	<b>20</b>	<b>4,720</b>
Lapse (-)	-10	-2360	0	0	-10	-2360
11.5 - Other personnel compensation		0		0		0
<b>Total FTEs and Personnel Compensation</b>	<b>10</b>	<b>2,360</b>	<b>0</b>	<b>0</b>	<b>10</b>	<b>2,360</b>
25.2 - Other services from non-federal sources		5115		0		5115
25.3 - Other goods and services from federal sources		50		0		50
31.0 - Equipment		2575		0		2575
<b>Total Program Change Requests</b>	<b>10</b>	<b>10,100</b>	<b>0</b>	<b>0</b>	<b>10</b>	<b>10,100</b>

### Summary of Requirements by Object Class

Criminal Division  
Salaries and Expenses  
(Dollars in Thousands)

Object Class	FY 2020 Actual		FY 2021 Enacted		FY 2022 Request		Increase/Decrease	
	Act. FTE	Amount	Direct FTE	Amount	Direct FTE	Amount	Direct FTE	Amount
11.1 - Full-time permanent	628	75,580	752	79,461	762	80,840	10	1,379
11.3 - Other than full-time permanent	0	17,088	0	19,305	0	11,541	0	-7,764
11.5 - Other personnel compensation	0	1,960	0	1,995	0	1,713	0	-282
<i>Overtime</i>	0	0	0	0	0	0	0	0
<i>Other Compensation</i>	0	0	0	0	0	0	0	0
11.8 - Special personal services payments	0	2,039	0	2,356	0	2,371	0	15
<b>Total</b>	<b>628</b>	<b>96,667</b>	<b>752</b>	<b>103,117</b>	<b>762</b>	<b>96,465</b>	<b>10</b>	<b>-6,652</b>
<b>Other Object Classes</b>								
12.1 - Civilian personnel benefits		31,035		32,340		29,663	0	-2,677
13.0 - Benefits for former personnel		0		8		8	0	0
21.0 - Travel and transportation of persons		4,375		4,588		3,381	0	-1,207
22.0 - Transportation of things		93		97		98	0	1
23.1 - Rental payments to GSA		27,056		27,526		30,112	0	2,586
23.2 - Rental payments to others		1,941		1,975		1,988	0	13
23.3 - Communications, utilities, and miscellaneous charges		4,248		4,387		4,416	0	29
24.0 - Printing and reproduction		33		65		65	0	0
25.1 - Advisory and assistance services		19,434		20,597		11,818	0	-8,779
25.2 - Other services from non-federal sources		4,773		4,999		9,651	0	4,652
25.3 - Other goods and services from federal sources		23,316		23,882		18,931	0	-4,951
25.4 - Operation and maintenance of facilities		1,353		2,014		2,027	0	13
25.7 - Operation and maintenance of equipment		2,259		2,305		2,320	0	15
26.0 - Supplies and materials		936		730		735	0	5
31.0 - Equipment		5,166		1,138		3,495	0	2,357
32.0 - Land and structures		10		0		0	0	0
<b>Total Obligations</b>		<b>222,695</b>		<b>229,768</b>		<b>215,173</b>	<b>0</b>	<b>-14,595</b>
<b>Net of:</b>								
Unobligated Balance, Start-of-Year		-15,337		-10,802		0	0	10,802
Transfers/Reprogramming		-3,443		-2,500		0	0	2,500
Recoveries/Refunds		-19,580		-19,212		0	0	19,212
Balance Rescission		0		0		0	0	0
Unobligated End-of-Year, Available		10,802		0		0	0	0
Unobligated End-of-Year, Expiring		480		0		0	0	0
<b>Total Direct Requirements</b>		<b>195,617</b>		<b>197,254</b>		<b>215,173</b>		<b>17,919</b>
Reimbursable FTE								
Full-Time Permanent	112		112		155		43	0

K. Summary of Requirements by Object Class

<i>Sub-Allotments and Direct Collections FTE</i>	235	290	290	0
--	-----	-----	-----	---

1/ Non-SES/SL/ST Estimated Salary

2/ Non-SES/SL/ST Estimated Award (FY21 = 1.5% of Salary; FY22 = 1.5% of Salary)