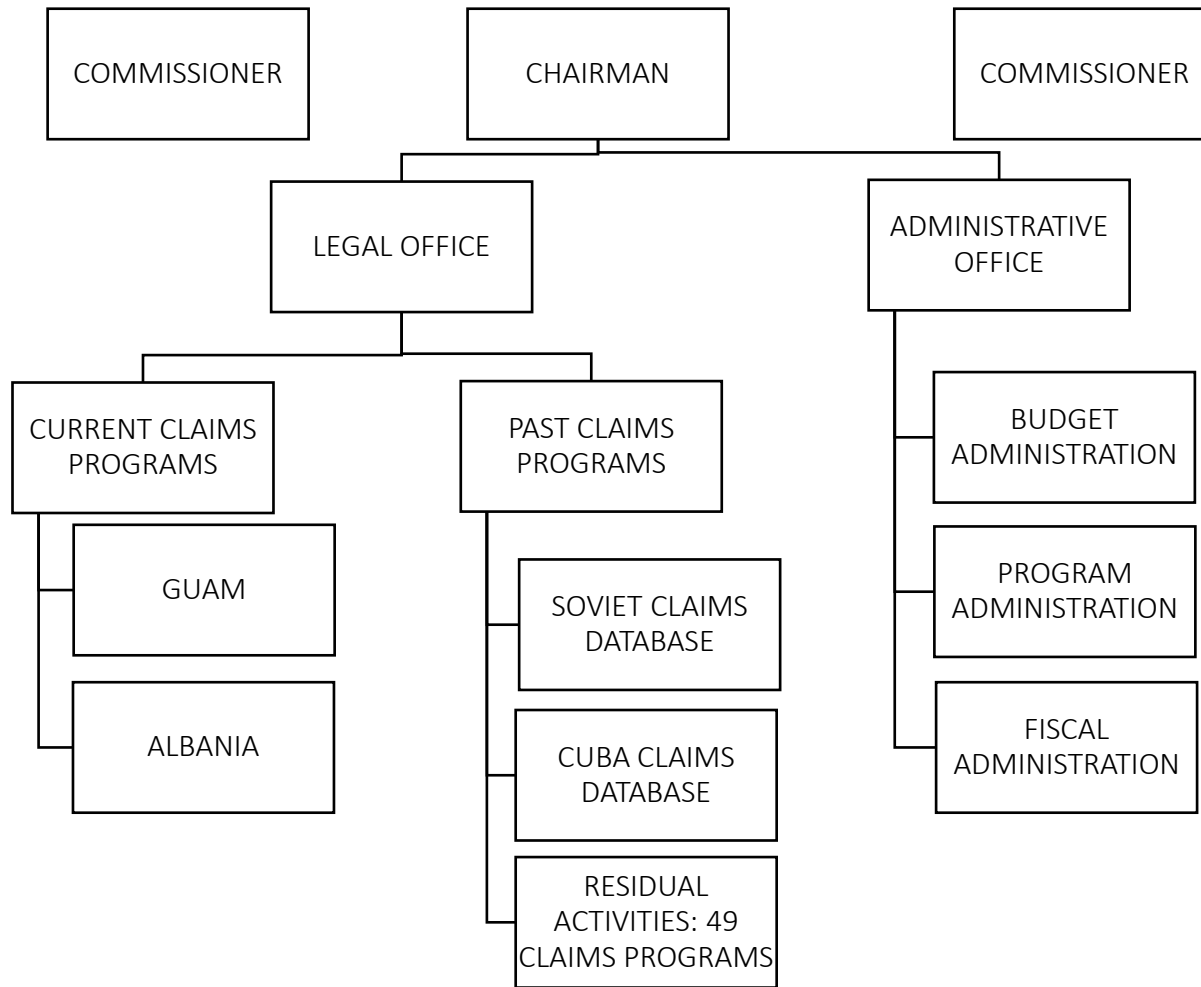


## FOREIGN CLAIMS SETTLEMENT COMMISSION



Approved By:  Date: August 31, 2020  
Brian M. Simkin, Chief Counsel

B. Summary of Requirements

**Summary of Requirements**  
 Foreign Claims Settlement Commission  
 Salaries and Expenses  
 (Dollars in Thousands)

	FY 2022 Request		
	Positions	Estimate FTE	Amount
<b>2020 Enacted 1/</b>	<b>11</b>	<b>7</b>	<b>2,335</b>
<b>Total 2020 Enacted</b>	<b>11</b>	<b>7</b>	<b>2,335</b>
<b>2021 Enacted</b>	<b>11</b>	<b>9</b>	<b>2,366</b>
<b>Base Adjustments</b>			
Pay and Benefits	0	0	68
<b>Total Base Adjustments</b>	<b>0</b>	<b>0</b>	<b>68</b>
<b>Total Technical and Base Adjustments</b>	<b>0</b>	<b>0</b>	<b>68</b>
<b>2022 Current Services</b>	<b>11</b>	<b>9</b>	<b>2,434</b>
<b>2022 Total Request</b>	<b>11</b>	<b>9</b>	<b>2,434</b>
2021 - 2022 Total Change	0	0	68

<sup>1/</sup> FY 2020 FTE is actual

B. Summary of Requirements

**Summary of Requirements**  
 Foreign Claims Settlement Commission  
 Salaries and Expenses  
 (Dollars in Thousands)

Program Activity	FY 2020 Enacted			FY 2021 Enacted			FY 2022 Technical and Base Adjustments			FY 2022 Current Services		
	Positions	Actual FTE	Amount	Positions	Est. FTE	Amount	Positions	Est. FTE	Amount	Positions	Est. FTE	Amount
Foreign Claims	11	7	2,335	11	9	2,366	0	0	68	11	9	2,434
<b>Total Direct</b>	<b>11</b>	<b>7</b>	<b>2,335</b>	<b>11</b>	<b>9</b>	<b>2,366</b>	<b>0</b>	<b>0</b>	<b>68</b>	<b>11</b>	<b>9</b>	<b>2,434</b>
Balance Rescission		0				0			0			0
<b>Total Direct with Rescission</b>			<b>2,335</b>			<b>2,366</b>			<b>68</b>			<b>2,434</b>
Reimbursable FTE		0			0			0			0	
<b>Total Direct and Reimb. FTE</b>		<b>7</b>			<b>9</b>			<b>0</b>			<b>9</b>	
Other FTE:												
LEAP		0			0			0			0	
Overtime		0			0			0			0	
<b>Grand Total, FTE</b>		<b>7</b>			<b>9</b>			<b>0</b>			<b>9</b>	

Program Activity	2022 Increases			2022 Offsets			2022 Request		
	Positions	Est. FTE	Amount	Positions	Est. FTE	Amount	Positions	Est. FTE	Amount
Foreign Claims	0	0	0	0	0	0	11	9	2,434
<b>Total Direct</b>	<b>0</b>	<b>0</b>	<b>0</b>	<b>0</b>	<b>0</b>	<b>0</b>	<b>11</b>	<b>9</b>	<b>2,434</b>
Balance Rescission			0			0			0
<b>Total Direct with Rescission</b>			<b>0</b>			<b>0</b>			<b>2,434</b>
Reimbursable FTE		0			0			0	
<b>Total Direct and Reimb. FTE</b>		<b>0</b>			<b>0</b>			<b>9</b>	
Other FTE:									
LEAP		0			0			0	
Overtime		0			0			0	
<b>Grand Total, FTE</b>		<b>0</b>			<b>0</b>			<b>9</b>	

**Resources by Department of Justice Strategic Goal and Objective**

Foreign Claims Settlement Commission  
Salaries and Expenses  
(Dollars in Thousands)

Strategic Goal and Strategic Objective	FY 2020 Enacted		FY 2021 Enacted		FY 2022 Current Services		FY 2022 Increases		FY 2022 Offsets		FY 2022 Total Request	
	Direct & Reimb FTE	Direct Amount	Direct & Reimb FTE	Direct Amount	Direct & Reimb FTE	Direct Amount	Direct & Reimb FTE	Direct Amount	Direct & Reimb FTE	Direct Amount	Direct & Reimb FTE	Direct Amount
<b>Goal 4 Promote Rule of Law, Integrity, and Good Government</b>												
4.1 Uphold the rule of law and integrity in the proper administration of justice	9	2,335	9	2,366	0	0	0	0	0	0	0	0
<b>Subtotal, Goal 4</b>	<b>9</b>	<b>2,335</b>	<b>9</b>	<b>2,366</b>	<b>0</b>	<b>0</b>	<b>0</b>	<b>0</b>	<b>0</b>	<b>0</b>	<b>0</b>	<b>0</b>
<b>TOTAL</b>	<b>9</b>	<b>2,335</b>	<b>9</b>	<b>2,366</b>	<b>0</b>	<b>0</b>	<b>0</b>	<b>0</b>	<b>0</b>	<b>0</b>	<b>0</b>	<b>0</b>

### Justifications for Technical and Base Adjustments

Foreign Claims Settlement Commission  
Salaries and Expenses  
(Dollars in Thousands)

	Positions	Estimate FTE	Amount
<b>Pay and Benefits</b>			
1 <u>2022 Pay Raise - 2.7%</u> This request provides for a proposed 2.7 percent pay raise to be effective in January of 2022. The amount requested, \$35,000, represents the pay amounts for 3/4 of the fiscal year plus appropriate benefits (\$29,000 for pay and \$6,000 for benefits.)	0	0	35
2 <u>Annualization of 2021 Pay Raise</u> This pay annualization represents first quarter amounts (October through December) of the 2021 pay increase of 1.0%. The amount requested, \$3,000, represents the pay amounts for 1/4 of the fiscal year plus appropriate benefits (\$2,200 for pay and \$800 for benefits).	0	0	3
3 <u>FERS Rate Increase</u> Effective October 1, 2021 (FY 2022), the new agency contribution rates of 18.4% (an increase of the prior rate of 17.3%) and 37.6% for law enforcement personnel (an increase of the prior rate of 35.8%), The amount requested, \$14,000, represents the funds needed to cover this increase.	0	0	14
4 <u>Health Insurance</u> Effective January 2022, the component's contribution to Federal employees' health insurance increases by 15.4 percent. Applied against the 2021 estimate of \$105,000, the additional amount required is \$16,000.	0	0	16
<b>Subtotal, Pay and Benefits</b>	<b>0</b>	<b>0</b>	<b>68</b>
<b>TOTAL DIRECT TECHNICAL and BASE ADJUSTMENTS</b>	<b>0</b>	<b>0</b>	<b>68</b>

**Crosswalk of 2020 Availability**  
 Foreign Claims Settlement Commission  
 Salaries and Expenses  
 (Dollars in Thousands)

Program Activity	FY 2020 Enacted			Reprogramming/Transfers			Carryover	Recoveries/ Refunds	FY 2020 Availability		
	Positions	Actual FTE	Amount	Positions	Actual FTE	Amount	Amount	Amount	Positions	Actual FTE	Amount
Foreign Claims	11	7	2,335	0	0	0	0	0	11	7	2,335
<b>Total Direct</b>	<b>11</b>	<b>7</b>	<b>2,335</b>	<b>0</b>	<b>0</b>	<b>0</b>	<b>0</b>	<b>0</b>	<b>11</b>	<b>7</b>	<b>2,335</b>
Balance Rescission			0			0	0	0			0
Total Direct with Rescission			2,335			0	0	0			2,335
Reimbursable FTE		0			0					0	
Total Direct and Reimb. FTE		7			0					7	
Other FTE:											
LEAP FTE		0			0					0	
Overtime		0			0					0	
Grand Total, FTE		7			0					7	

**Reprogramming/Transfers:**

**Carryover:**

**Recoveries/Refunds:**

**Crosswalk of 2021 Availability**  
 Foreign Claims Settlement Commission  
 Salaries and Expenses  
 (Dollars in Thousands)

Program Activity	FY 2021 Enacted			Reprogramming/Transfers			Carryover	Recoveries/ Refunds	FY 2021 Availability		
	Positions	Est. FTE	Amount	Positions	Est. FTE	Amount	Amount	Amount	Positions	Est. FTE	Amount
Foreign Claims	11	9	2,366	0	0	0	0	0	11	9	2,366
<b>Total Direct</b>	<b>11</b>	<b>9</b>	<b>2,366</b>	<b>0</b>	<b>0</b>	<b>0</b>	<b>0</b>	<b>0</b>	<b>11</b>	<b>9</b>	<b>2,366</b>
Balance Rescission			0			0	0	0			0
Total Direct with Rescission			2,366			0	0	0			2,366
Reimbursable FTE		0			0					0	
Total Direct and Reimb. FTE		9			0					9	
Other FTE:											
LEAP FTE		0			0					0	
Overtime		0			0					0	
Grand Total, FTE		9			0					9	

Reprogramming/Transfers:

Carryover:

Recoveries/Refunds:

**Detail of Permanent Positions by Category**

Foreign Claims Settlement Commission

Salaries and Expenses

(Dollars in Thousands)

Category	FY 2020 Enacted		FY 2021 Enacted		FY 2022 Request				
	Direct Pos.	Reimb. Pos.	Direct Pos.	Reimb. Pos.	ATBs	Program Increases	Program Offsets	Total Direct Pos.	Total Reimb. Pos.
Clerical and Office Services (0300-0399)	4	0	4	0	0	0	0	4	0
Accounting and Budget (500-599)	1	0	1	0	0	0	0	1	0
Paralegals / Other Law (900-998)	1	0	1	0	0	0	0	1	0
Attorneys (905)	5	0	5	0	0	0	0	5	0
<b>Total</b>	<b>11</b>	<b>0</b>	<b>11</b>	<b>0</b>	<b>0</b>	<b>0</b>	<b>0</b>	<b>11</b>	<b>0</b>
Headquarters Washington D.C.	11	0	11	0	0	0	0	11	0
US Fields	0	0	0	0	0	0	0	0	0
Foreign Field	0	0	0	0	0	0	0	0	0
<b>Total</b>	<b>11</b>	<b>0</b>	<b>11</b>	<b>0</b>	<b>0</b>	<b>0</b>	<b>0</b>	<b>11</b>	<b>0</b>



### Summary of Requirements by Object Class

Foreign Claims Settlement Commission

Salaries and Expenses

(Dollars in Thousands)

Object Class	FY 2020 Actual		FY 2021 Enacted		FY 2022 Request		Increase/Decrease	
	Act. FTE	Amount	Direct FTE	Amount	Direct FTE	Amount	Direct FTE	Amount
11.1 - Full-time permanent	7	920	9	1,226	9	1,282	0	56
11.3 - Other than full-time permanent	0	13	0	38	0	38	0	0
11.5 - Other personnel compensation	0	13	0	28	0	33	0	5
<i>Overtime</i>	0	0	0	0	0	0	0	0
<i>Other Compensation</i>	0	0	0	0	0	0	0	0
11.8 - Special personal services payments	0	0	0	0	0	0	0	0
<b>Total</b>	<b>7</b>	<b>946</b>	<b>9</b>	<b>1,292</b>	<b>9</b>	<b>1,353</b>	<b>0</b>	<b>61</b>
<b>Other Object Classes</b>								
12.1 - Civilian personnel benefits		348		414		446	0	32
21.0 - Travel and transportation of persons		0		17		17	0	0
22.0 - Transportation of things		0		15		15	0	0
23.2 - Rental payments to others		374		339		339	0	0
23.3 - Communications, utilities, and miscellaneous charges		24		30		30	0	0
24.0 - Printing and reproduction		8		5		5	0	0
25.1 - Advisory and assistance services		4		5		5	0	0
25.2 - Other services from non-federal sources		8		52		52	0	0
25.3 - Other goods and services from federal sources		40		137		112	0	-25
25.4 - Operation and maintenance of facilities		0		41		41	0	0
25.6 - Medical care		0		1		1	0	0
25.7 - Operation and maintenance of equipment		18		10		10	0	0
26.0 - Supplies and materials		17		6		6	0	0
31.0 - Equipment		0		2		2	0	0
<b>Total Obligations</b>		<b>1,787</b>		<b>2,366</b>		<b>2,434</b>	<b>0</b>	<b>68</b>
<b>Net of:</b>								
Unobligated Balance, Start-of-Year		0		0		0	0	0
Transfers/Reprogramming		0		0		0	0	0
Recoveries/Refunds		0		0		0	0	0
Balance Rescission		0		0		0	0	0
Unobligated End-of-Year, Available		0		0		0	0	0
Unobligated End-of-Year, Expiring		548		0		0	0	0
<b>Total Direct Requirements</b>		<b>2,335</b>		<b>2,366</b>		<b>2,434</b>		<b>68</b>
Reimbursable FTE								
Full-Time Permanent	0		0		0		0	0

The FCSC will continue to pay increased non-SES Awards at least 1% greater in FY 21 and FY22.