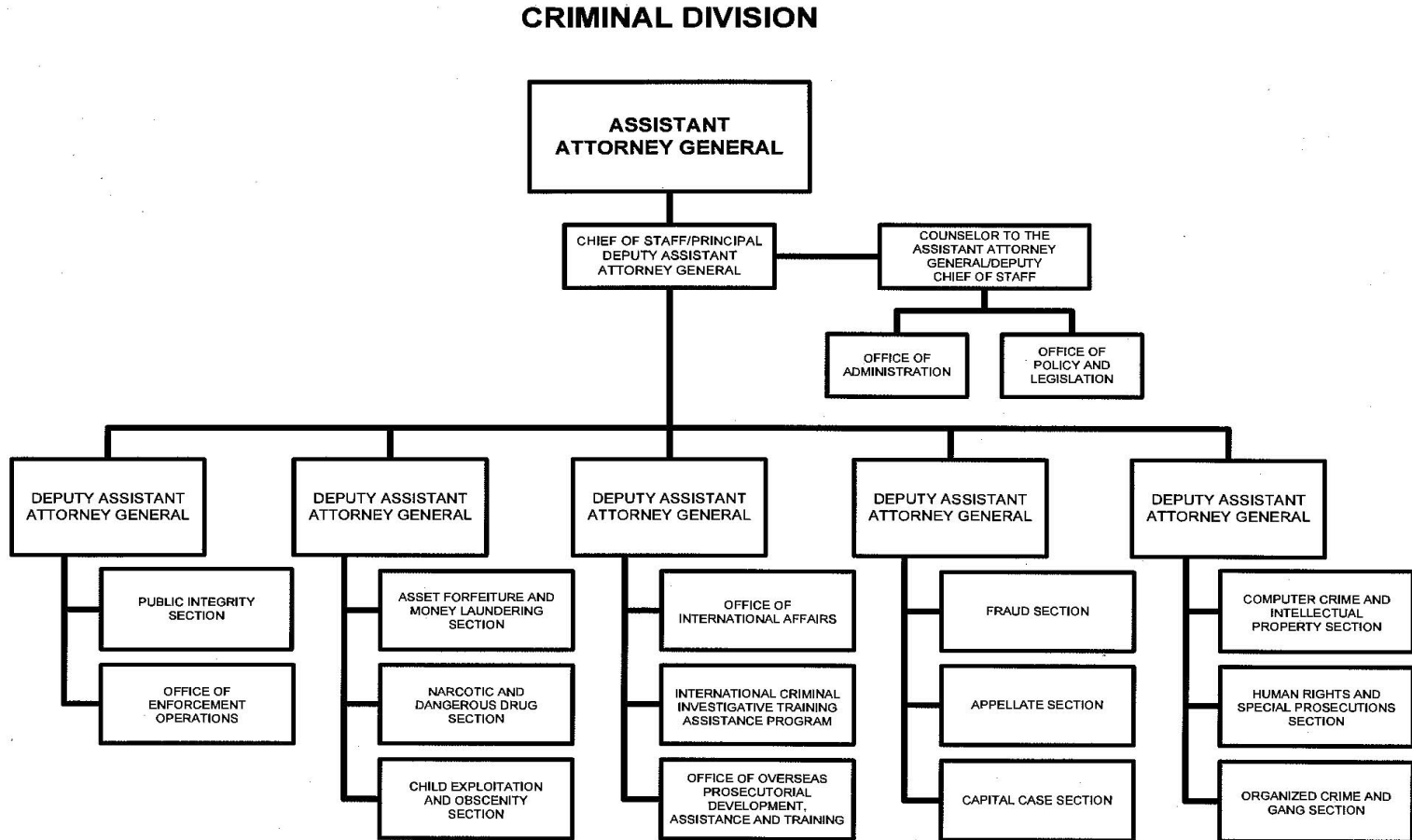


A: Organizational Chart



Approved by: 
 ERIC H. HOLDER, JR.
 Attorney General

Date: Aug. 28, 2013

B. Summary of Requirements

Summary of Requirements

Criminal Division
Salaries and Expenses
(Dollars in Thousands)

	FY 2017 Request		
	Direct Pos.	Estimate FTE	Amount
2015 Enacted 1/	750	624	178,042
Total 2015 Enacted	750	624	178,042
2016 Enacted	768	683	181,745
Base Adjustments			
Pay and Benefits	0	9	996
Domestic Rent and Facilities	0	0	1,592
Foreign Expenses	0	0	-621
Total Base Adjustments	0	9	1,967
Total Technical and Base Adjustments	0	9	1,967
2017 Current Services	768	692	183,712
Program Changes			
Increases:			
Mutual Legal Assistance Treaty (MLAT) Reform	97	49	10,036
International Law Enforcement and Justice Development	61	31	4,964
Subtotal, Increases	158	80	15,000
Total Program Changes	158	80	15,000
2017 Total Request	926	772	198,712
2016 - 2017 Total Change	158	89	16,967

^{1/} FY 2015 FTE is actual

Summary of Requirements

Criminal Division
Salaries and Expenses
(Dollars in Thousands)

Program Activity	FY 2015 Appropriation Enacted			FY 2016 Enacted			FY 2017 Technical and Base Adjustments			FY 2017 Current Services		
	Direct Pos.	Actual FTE	Amount	Direct Pos.	Est. FTE	Amount	Direct Pos.	Est. FTE	Amount	Direct Pos.	Est. FTE	Amount
Enforcing Federal Criminal Laws	750	624	178,042	768	683	181,745	0	9	1,967	768	692	183,712
Total Direct	750	624	178,042	768	683	181,745	0	9	1,967	768	692	183,712
Balance Rescission			0			0			0			0
Total Direct with Rescission			178,042			181,745			1,967			183,712
Reimbursable FTE		280			348			23			371	
Total Direct and Reimb. FTE		904			1,031			32			1,063	
Other FTE:												
LEAP		0			0			0			0	
Overtime		0			0			0			0	
Grand Total, FTE		904			1,031			32			1,063	

Program Activity	2017 Increases			2017 Offsets			2017 Request		
	Direct Pos.	Est. FTE	Amount	Direct Pos.	Est. FTE	Amount	Direct Pos.	Est. FTE	Amount
Enforcing Federal Criminal Laws	158	80	15,000	0	0	0	926	772	198,712
Total Direct	158	80	15,000	0	0	0	926	772	198,712
Balance Rescission			0			0			0
Total Direct with Rescission			15,000			0			198,712
Reimbursable FTE		0			0			371	
Total Direct and Reimb. FTE		80			0			1,143	
Other FTE:									
LEAP		0			0			0	
Overtime		0			0			0	
Grand Total, FTE		80			0			1,143	

FY 2017 Program Increases/Offsets by Decision Unit

Criminal Division
 Salaries and Expenses
 (Dollars in Thousands)

Program Increases	Location of Description by Program Activity	Enforcing Federal Criminal Laws				Total Increases			
		Direct Pos.	Agt./Atty.	Est. FTE	Amount	Direct Pos.	Agt./Atty.	Est. FTE	Amount
Mutual Legal Assistance Treaty (MLAT) Reform		97	54	49	10,036	97	54	49	10,036
International Law Enforcement and Justice Development		61	8	31	4,964	61	8	31	4,964
Total Program Increases		158	62	80	15,000	158	62	80	15,000

Program Offsets	Location of Description by Program Activity	Enforcing Federal Criminal Laws				Total Offsets			
		Direct Pos.	Agt./Atty.	Est. FTE	Amount	Direct Pos.	Agt./Atty.	Est. FTE	Amount
No Program Offsets									
Total Program Offsets									

Resources by Department of Justice Strategic Goal and Objective

Criminal Division
Salaries and Expenses
(Dollars in Thousands)

Strategic Goal and Strategic Objective	FY 2015 Appropriation Enacted		FY 2016 Enacted		FY 2017 Current Services		FY 2017 Increases		FY 2017 Offsets		FY 2017 Total Request	
	Direct & Reimb FTE	Direct Amount	Direct & Reimb FTE	Direct Amount	Direct & Reimb FTE	Direct Amount	Direct & Reimb FTE	Direct Amount	Direct & Reimb FTE	Direct Amount	Direct & Reimb FTE	Direct Amount
	Goal 1 Prevent Terrorism and Promote the Nation's Security Consistent with the Rule of Law											
1.1 Prevent, disrupt, and defeat terrorist operations before they occur by integrating intelligence and law enforcement efforts to achieve a coordinated response to terrorist threats.	53	5,964	66	6,795	65	6,869	8	1,218	0	0	73	8,087
1.2 Prosecute those involved in terrorist acts	20	4,877	18	4,525	18	4,574	3	549	0	0	21	5,123
1.4 Combat cyber-based threats and attacks through the use of all available tools, strong public-private partnerships, and the investigation and prosecution of cyber threat actors.	69	16,495	76	19,167	82	19,350	8	1,522	0	0	90	20,872
Subtotal, Goal 1	142	27,336	160	30,487	165	30,793	19	3,289	0	0	184	34,082
Goal 2 Prevent crime, protect the rights of the American people, and enforce federal law												
2.1 Combat the threat, incidence, and prevalence of violent crime by leveraging strategic partnerships to investigate, arrest, and prosecute violent offenders and illegal firearms traffickers.	116	26,163	116	26,036	116	26,319	8	1,587	0	0	124	27,906
2.2 Prevent and intervene in crimes against vulnerable populations and uphold the rights of, and improve services to America's crime victims.	65	16,985	63	16,935	63	17,118	4	687	0	0	67	17,805
2.3 Disrupt and dismantle major drug trafficking organizations to combat the threat, trafficking, and use of illegal drugs and the diversion of licit drugs.	193	31,307	177	30,698	183	31,030	16	3,250	0	0	199	34,280
2.4 Investigate and prosecute corruption, economic crimes, and transnational organized crime.	352	61,729	397	62,803	418	63,508	19	3,812	0	0	437	67,320
2.5 Promote and protect American civil rights by preventing and prosecuting discriminatory practices.	3	578	3	595	4	601	0	63	0	0	4	664
Subtotal, Goal 2	729	136,762	756	137,067	784	138,576	47	9,399	0	0	831	147,975
Goal 3 Ensure and support the fair, impartial, efficient, and transparent administration of justice at the federal, state, local, tribal, and international levels												
3.1 Promote and strengthen relationships and strategies for the administration of justice with law enforcement agencies, organizations, prosecutors, and defenders, through innovative leadership and programs.	73	7,497	87	7,829	86	7,913	13	2,144	0	0	99	10,057
3.6 Prevent and respond to genocide and mass atrocities and ensure that perpetrators of such crimes are held accountable in the United States, and if appropriate, their home countries.	27	6,447	28	6,362	28	6,430	1	168	0	0	29	6,598
Subtotal, Goal 3	100	13,944	115	14,191	114	14,343	14	2,312	0	0	128	16,655
TOTAL	971	178,042	1,031	181,745	1,063	183,712	80	15,000	0	0	1,143	198,712

Justifications for Technical and Base Adjustments

Criminal Division
Salaries and Expenses
(Dollars in Thousands)

	Direct Pos.	Estimate FTE	Amount
Pay and Benefits			
1 <u>2017 Pay Raise - 1.6%</u> This request provides for a proposed 1.6 percent pay raise to be effective in January of 2017. The amount request, \$1,393,000, represents the pay amounts for 3/4 of the fiscal year plus appropriate benefits (\$1,087,000 for pay and \$306,000 for benefits.)	0	0	1,393
2 <u>Annualization of 2016 Pay Raise</u> This pay annualization represents first quarter amounts (October through December) of the 2016 pay increase of 1.3 percent included in the 2016 President's Budget. The amount requested \$415,000, represents the pay amounts for 1/4 of the fiscal year plus appropriate benefits (\$323,700 for pay and \$91,300 for benefits).	0	0	415
3 <u>Changes in Compensable Days</u> The decreased cost for two compensable days in FY 2017 compared to FY 2016 is calculated by dividing the FY 2016 estimated personnel compensation \$107,064,000 and applicable benefits \$25,322,000 by 260 compensable days is -\$1,011,000.	0	0	-1,011
4 <u>Employees Compensation Fund</u> The -\$70,000 request reflects anticipated changes in payments to the Department of Labor for injury benefits under the Federal Employee Compensation Act.	0	0	-70
5 <u>Health Insurance</u> Effective January 2017, the component's contribution to Federal employees' health insurance increases by 2.3 percent. Applied against the 2016 estimate of \$6,366,000, the additional amount required is \$145,000.	0	0	145
6 <u>Position/FTE Adjustment</u> Position/FTE Adjustment	0	9	0
7 <u>Retirement</u> Agency retirement contributions increase as employees under CSRS retire and are replaced by FERS employees. Based on U.S. Department of Justice Agency estimates, we project that the DOJ workforce will convert from CSRS to FERS at a rate of 0.8 percent per year, for both LEO and Non-LEO, based on the past 5 years of DOJ retirement data. The requested increase of \$124,000 is necessary to meet our increased retirement obligations as a result of this conversion.	0	0	124
Subtotal, Pay and Benefits	0	9	996

Justifications for Technical and Base Adjustments

Criminal Division
Salaries and Expenses
(Dollars in Thousands)

	Direct Pos.	Estimate FTE	Amount
Domestic Rent and Facilities			
1 <u>GSA Rent</u> GSA will continue to charge rental rates that approximate those charged to commercial tenants for equivalent space and related services. The requested increase of \$1,455 is required to meet our commitment to GSA. The costs associated with GSA rent were derived through the use of an automated system, which uses the latest inventory data, including rate increases to be effective FY 2017 for each building currently occupied by Department of Justice components, as well as the costs of new space to be occupied.	0	0	1,455
2 <u>Guard Service</u> This includes Department of Homeland Security (DHS) Federal Protective Service charges, Justice Protective Service charges and other security services across the country. The requested increase of \$56,000 is required to meet these commitments.	0	0	56
3 <u>Utilities - non GSA Facilities</u> Based on current usage, an additional \$81,000, representing a 19% increase in utility costs, is required in FY2017.	0	0	81
Subtotal, Domestic Rent and Facilities	0	0	1,592
Foreign Expenses			
1 <u>Capital Security Cost Sharing</u> Per P.L. 108-447 and subsequent acts, "all agencies with personnel overseas subject to chief of mission authority...shall participate and provide funding in advance for their share of costs of providing new, safe, secure U.S. diplomatic facilities, without offsets, on the basis of the total overseas presence of each agency as determined by the Secretary of State." Originally authorized for FY 2000-2004, the program has been extended annually by OMB and Congress and has also been expanded beyond new embassy construction to include maintenance and renovation costs of the new facilities. For the purpose of this program, State's personnel totals for DOJ include current and projected staffing. The estimated cost to the Department, as provided by State, for FY 2017 is \$146,388,966. The Criminal Division currently has 226 positions overseas, and funding of -\$621,000 is requested for this account.	0	0	-621
Subtotal, Foreign Expenses	0	0	-621
TOTAL DIRECT TECHNICAL and BASE ADJUSTMENTS	0	9	1,967

E. Justifications for Technical and Base Adjustments

Justifications for Technical and Base Adjustments

Criminal Division
 Salaries and Expenses
 (Dollars in Thousands)

	Direct Pos.	Estimate FTE	Amount
ATB Reimbursable FTE Changes			
1 ATB Reimbursable FTE Adjustment	0	23	0
ATB Reimbursable FTE Adjustment			
Subtotal, ATB Reimbursable FTE Changes	0	23	0

Crosswalk of 2015 Availability

Criminal Division
Salaries and Expenses
(Dollars in Thousands)

Program Activity	FY 2015 Appropriation Enacted			Reprogramming/Transfers			Carryover	Recoveries/ Refunds	FY 2015 Availability		
	Direct Pos.	Actual FTE	Amount	Direct Pos.	Actual FTE	Amount	Amount	Amount	Direct Pos.	Actual FTE	Amount
Enforcing Federal Criminal Laws	750	624	178,042	64	0	13,434	3,255		814	624	194,731
Total Direct	750	624	178,042	64	0	13,434	3,255	0	814	624	194,731
Balance Rescission			0			0	0	-1,181			-1,181
Total Direct with Rescission			178,042			13,434	3,255	-1,181			193,550
Reimbursable FTE		280			0					280	
Total Direct and Reimb. FTE		904			0					904	
Other FTE:											
LEAP FTE		0			0					0	
Overtime		0			0					0	
Grand Total, FTE		904			0					904	

Reprogramming/Transfers: \$13,500,000 transferred from the FEW account to the GLA no-year account for MLAT; \$66,000 was transferred from the GLA no-year account for the JIST program.

Carryover: Funds carried over into FY 2015 from GLA's 2014 no-year account.

Recoveries/Refunds: Unobligated balance rescission from carryover funding.

Crosswalk of 2016 Availability

Criminal Division
Salaries and Expenses
(Dollars in Thousands)

Program Activity	FY 2016 Enacted			Reprogramming/Transfers			Carryover	Recoveries/ Refunds	FY 2016 Availability		
	Direct Pos.	Est. FTE	Amount	Direct Pos.	Est. FTE	Amount	Amount	Amount	Direct Pos.	Est. FTE	Amount
Enforcing Federal Criminal Laws	768	683	181,745	64	38	0	13,463	0	832	721	195,208
Total Direct	768	683	181,745	64	38	0	13,463	0	832	721	195,208
Balance Rescission			0			0	0	0			0
Total Direct with Rescission			181,745			0	13,463	0			195,208
Reimbursable FTE		348			0					348	
Total Direct and Reimb. FTE		1,031			38					1,069	
Other FTE:											
LEAP FTE		0			0					0	
Overtime		0			0					0	
Grand Total, FTE		1,031			38					1,069	

Reprogramming/Transfers: Positions and FTE related to MLAT Transfer.

Carryover: Funds carried over into FY 2015 from GLA's 2015 no-year

Summary of Reimbursable Resources

Criminal Division
Salaries and Expenses
(Dollars in Thousands)

Collections by Source	2015 Actual			2016 Estimate			2017 Request			Increase/Decrease		
	Reimb. Pos.	Reimb. FTE	Amount	Reimb. Pos.	Reimb. FTE	Amount	Reimb. Pos.	Reimb. FTE	Amount	Reimb. Pos.	Reimb. FTE	Amount
All Other Sources	70	48	41,817	43	39	45,000	39	36	45,000	-4	-3	0
Asset Forfeiture Fund	103	86	52,896	107	92	64,632	107	107	64,632	0	15	0
Department of Health and Human Services	0	0	0	65	54	27,306	65	65	33,900	0	11	6,594
Department of State	184	150	150,955	184	150	100,710	184	148	100,710	0	-2	0
Interagency Crime and Drug Enforcement	13	13	2,002	13	13	2,045	17	15	2,495	4	2	450
Budgetary Resources	370	297	247,670	412	348	239,693	412	371	246,737	0	23	7,044

Obligations by Program Activity	2015 Actual			2016 Estimate			2017 Request			Increase/Decrease		
	Reimb. Pos.	Reimb. FTE	Amount	Reimb. Pos.	Reimb. FTE	Amount	Reimb. Pos.	Reimb. FTE	Amount	Reimb. Pos.	Reimb. FTE	Amount
Enforcing Federal Criminal Laws	370	297	247,670	412	348	239,693	412	371	246,737	0	23	7,044
Budgetary Resources	370	297	247,670	412	348	239,693	412	371	246,737	0	23	7,044

Note: The Reimbursable resources here include Health Care Fraud resources funded through direct collections that are elsewhere shown as direct resources. The Health Care Fraud resources are presented here to indicate that these positions, FTE, and amounts are not funded through DOJ direct appropriations.

Detail of Permanent Positions by Category

Criminal Division
Salaries and Expenses
(Dollars in Thousands)

Category	FY 2015 Enacted		FY 2016 Enacted		FY 2017 Request				
	Direct Pos.	Reimb. Pos.	Direct Pos.	Reimb. Pos.	ATBs	Program Increases	Program Offsets	Total Direct Pos.	Total Reimb. Pos.
Miscellaneous Operations (001-099)	1	0	1	0	0	0	0	1	0
Security Specialists (080)	11	0	11	0	0	0	0	11	0
Intelligence Series (132)	1	0	1	0	0	0	0	1	0
Personnel Management (0200-0260)	19	0	19	0	0	0	0	19	0
Clerical and Office Services (0300-0399)	146	78	147	78	0	84	0	231	78
Accounting and Budget (500-599)	10	36	10	36	0	12	0	22	36
Paralegals / Other Law (900-998)	90	25	10	25	0	0	0	10	25
Attorneys (905)	439	225	448	267	0	62	0	510	267
Information & Arts (1000-1099)	1	1	1	1	0	0	0	1	1
Paralegal Specialist (0950)	0	0	84	0	0	0	0	84	0
Business & Industry (1100-1199)	2	1	2	1	0	0	0	2	1
Physical Sciences (1300-1399)	0	1	0	1	0	0	0	0	1
Library (1400-1499)	4	0	4	0	0	0	0	4	0
Equipment/Facilities Services (1600-1699)	2	0	2	0	0	0	0	2	0
Education (1700-1799)	0	1	0	1	0	0	0	0	1
Inspection, Investigation, Enforcement Analyst(1801)	6	0	6	0	0	0	0	6	0
Transportation (2100-2199)	0	1	0	1	0	0	0	0	1
Information Technology Mgmt (2210-2299)	18	1	22	1	0	0	0	22	1
Total	750	370	768	412	0	158	0	926	412
Headquarters Washington D.C.	736	237	754	215	0	154	0	908	215
US Fields	0	0	0	0	0	0	0	0	0
Foreign Field	14	133	14	197	0	4	0	18	197
Total	750	370	768	412	0	158	0	926	412

Financial Analysis of Program Changes

Criminal Division
Salaries and Expenses
(Dollars in Thousands)

Grades	Enforcing Federal Criminal Laws				Total Program Changes	
	Program Increases		Program Decreases		Direct Pos.	Amount
	Direct Pos.	Amount	Direct Pos.	Amount		
GS-14	62	14,201	0	0	62	14,201
GS-13	13	2,305	0	0	13	2,305
GS-9	76	8,475	0	0	76	8,475
GS-7	7	655	0	0	7	655
Total Positions and Annual Amount	158	25,636	0	0	158	25,636
Lapse (-)	-78	-18,991	0	0	-78	-18,991
11.5 - Other personnel compensation		0		0		0
Total FTEs and Personnel Compensation	80	6,645	0	0	80	6,645
12.1 - Civilian personnel benefits		2,195		0		2,195
21.0 - Travel and transportation of persons		359		0		359
22.0 - Transportation of things		111		0		111
23.2 - Rental payments to others		134		0		134
23.3 - Communications, utilities, and miscellaneous charges		528		0		528
24.0 - Printing and reproduction		8		0		8
25.2 - Other services from non-federal sources		169		0		169
25.3 - Other goods and services from federal sources		1,531		0		1,531
25.6 - Medical care		17		0		17
26.0 - Supplies and materials		119		0		119
31.0 - Equipment		3,184		0		3,184
Total Program Change Requests	80	15,000	0	0	80	15,000

Summary of Requirements by Object Class

Criminal Division
Salaries and Expenses
(Dollars in Thousands)

Object Class	FY 2015 Actual		FY 2016 Enacted		FY 2017 Request		Increase/Decrease	
	Act. FTE	Amount	Direct FTE	Amount	Direct FTE	Amount	Direct FTE	Amount
11.1 - Full-time permanent	624	72,581	683	74,508	772	78,937	89	4,429
11.3 - Other than full-time permanent	0	7,051	0	10,600	0	7,600	0	-3,000
11.5 - Other personnel compensation	0	1,445	0	1,875	0	1,800	0	-75
<i>Overtime</i>	0	0	0	0	0	0	0	0
<i>Other Compensation</i>	0	0	0	0	0	0	0	0
11.8 - Special personal services payments	0	76	0	3,500	0	3,500	0	0
Total	624	81,153	683	90,483	772	91,837	89	1,354
Other Object Classes								
12.1 - Civilian personnel benefits		24,015		25,580		25,464	0	-116
13.0 - Benefits for former personnel		50		50		50	0	0
21.0 - Travel and transportation of persons		4,512		5,383		5,359	0	-24
22.0 - Transportation of things		729		850		961	0	111
23.1 - Rental payments to GSA		24,315		26,500		27,955	0	1,455
23.2 - Rental payments to others		1,537		2,000		2,134	0	134
23.3 - Communications, utilities, and miscellaneous charges		3,579		4,400		5,009	0	609
24.0 - Printing and reproduction		106		150		158	0	8
25.1 - Advisory and assistance services		8,169		8,500		8,500	0	0
25.2 - Other services from non-federal sources		18,712		17,825		17,169	0	-656
25.3 - Other goods and services from federal sources		8,711		8,081		6,896	0	-1,185
25.6 - Medical care		97		100		117	0	17
25.7 - Operation and maintenance of equipment		248		300		300	0	0
26.0 - Supplies and materials		817		1,868		1,119	0	-749
31.0 - Equipment		2,797		3,138		5,684	0	2,546
Total Obligations		179,547		195,208		198,712	0	3,504
Net of:								
Unobligated Balance, Start-of-Year		-3,255		-13,463		0	0	13,463
Transfers/Reprogramming		-13,434		0		0	0	0
Recoveries/Refunds		0		0		0	0	0
Balance Rescission		1,181		0		0	0	0
Unobligated End-of-Year, Available		13,463		0		0	0	0
Unobligated End-of-Year, Expiring		540		0		0	0	0
Total Direct Requirements		178,042		181,745		198,712		16,967
Reimbursable FTE								
Full-Time Permanent	280		348		371		23	0

Note: Direct FTE and obligations do not include Health Care Fraud resources.