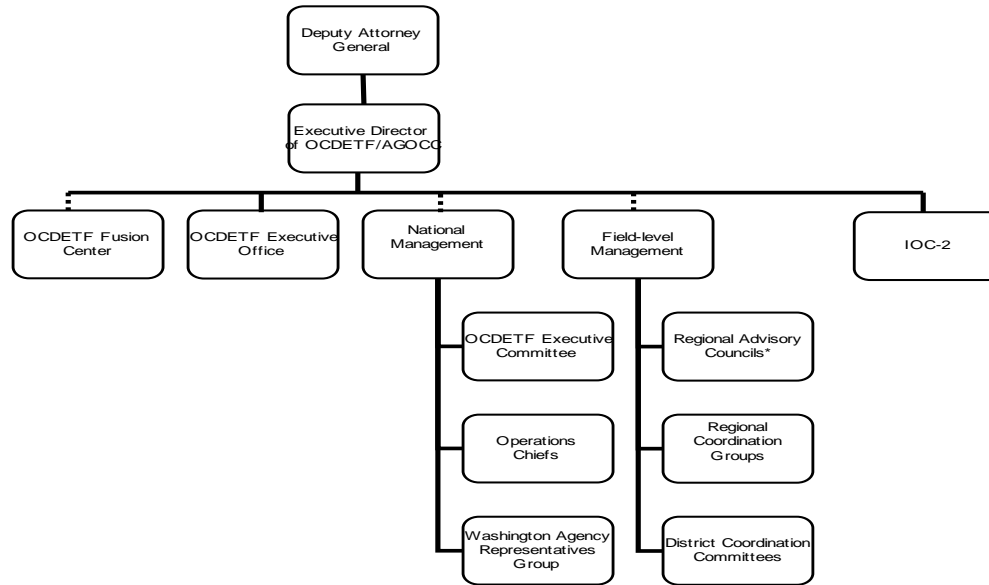


A: Organizational Chart

# OCDETF Organizational Chart



•Each of the nine OCDETF Regions is structured the same way with a Regional Advisory Council, a Regional Coordination Group and a District Coordination Committee in each judicial district in the region. Thus, there are a total of 94 District Coordination Committees.

•Dashed lines (--) indicate oversight responsibility rather than direct reporting authority. These entities are accountable to the OCDETF Director and DAG for program performance and use of program resources.

B. Summary of Requirements

**Summary of Requirements**  
 Interagency Crime & Drug Enforcement  
 Salaries and Expenses  
 (Dollars in Thousands)

	FY 2018 Request		
	Positions	Estimate FTE	Amount
<b>2016 Enacted 1/</b>	[2,935]	[2,882]	512,000
<b>Total 2016 Enacted</b>	[2,935]	[2,882]	512,000
<b>2017 Continuing Resolution</b>	[2,935]	[2,882]	512,000
2017 Rescission - 0.1901%	0	0	-973
<b>Total 2017 Continuing Resolution</b>	[2,935]	[2,882]	511,027
<b>Base Adjustments</b>			
Pay and Benefits	-[65]	-[12]	9,020
Domestic Rent and Facilities	0	0	192
<b>Total Base Adjustments</b>	-[65]	-[12]	9,212
<b>Total Technical and Base Adjustments</b>	-[65]	-[12]	9,212
<b>2018 Current Services</b>	[2,870]	[2,870]	520,239
<b>Program Changes</b>			
Increases:			
Violent Crime, the Opioid Epidemic, and Transnational Organized Crime	0	0	5,761
Subtotal, Increases	0	0	5,761
<b>Total Program Changes</b>	0	0	5,761
<b>2018 Total Request</b>	[2,870]	[2,870]	526,000
2017 - 2018 Total Change	-[65]	-[12]	14,973

<sup>1/</sup> FY 2016 FTE is actual

B. Summary of Requirements

**Summary of Requirements**  
 Interagency Crime & Drug Enforcement  
 Salaries and Expenses  
 (Dollars in Thousands)

Program Activity	FY 2016 Enacted			FY 2017 Continuing Resolution			FY 2018 Technical and Base Adjustments			FY 2018 Current Services		
	Positions	Actual FTE	Amount	Positions	Est. FTE	Amount	Positions	Est. FTE	Amount	Positions	Est. FTE	Amount
Investigations	[1,885]	[1,884]	356,597	[1,885]	[1,884]	355,919	-[65]	-[64]	3,423	[1,820]	[1,820]	359,342
Prosecutions	[1,050]	[998]	155,403	[1,050]	[998]	155,108	0	[52]	5,789	[1,050]	[1,050]	160,897
<b>Total Direct</b>	<b>[2,935]</b>	<b>[2,882]</b>	<b>512,000</b>	<b>[2,935]</b>	<b>[2,882]</b>	<b>511,027</b>	<b>-[65]</b>	<b>-[12]</b>	<b>9,212</b>	<b>[2,870]</b>	<b>[2,870]</b>	<b>520,239</b>
Balance Rescission			0			0			0			0
<b>Total Direct with Rescission</b>			<b>512,000</b>			<b>511,027</b>			<b>9,212</b>			<b>520,239</b>
Reimbursable FTE		0			0			0			0	
<b>Total Direct and Reimb. FTE</b>		<b>[2,882]</b>			<b>[2,882]</b>			<b>-[12]</b>			<b>[2,870]</b>	
Other FTE:												
LEAP		0			0			0			0	
Overtime		0			0			0			0	
<b>Grand Total, FTE</b>		<b>[2,882]</b>			<b>[2,882]</b>			<b>-[12]</b>			<b>[2,870]</b>	

Program Activity	2018 Increases			2018 Offsets			2018 Request		
	Positions	Est. FTE	Amount	Positions	Est. FTE	Amount	Positions	Est. FTE	Amount
Investigations	0	0	5,343	0	0	0	[1,820]	[1,820]	364,685
Prosecutions	0	0	418	0	0	0	[1,050]	[1,050]	161,315
<b>Total Direct</b>	<b>0</b>	<b>0</b>	<b>5,761</b>	<b>0</b>	<b>0</b>	<b>0</b>	<b>[2,870]</b>	<b>[2,870]</b>	<b>526,000</b>
Balance Rescission			0			0			0
<b>Total Direct with Rescission</b>			<b>5,761</b>			<b>0</b>			<b>526,000</b>
Reimbursable FTE		0			0			0	
<b>Total Direct and Reimb. FTE</b>		<b>0</b>			<b>0</b>			<b>[2,870]</b>	
Other FTE:									
LEAP		0			0			0	
Overtime		0			0			0	
<b>Grand Total, FTE</b>		<b>0</b>			<b>0</b>			<b>[2,870]</b>	

**FY 2018 Program Increases/Offsets by Decision Unit**

Interagency Crime & Drug Enforcement  
 Salaries and Expenses  
 (Dollars in Thousands)

Program Increases	Location of Description by Program Activity	Investigations				Prosecutions				Total Increases			
		Positions	Agt./Atty.	Est. FTE	Amount	Positions	Agt./Atty.	Est. FTE	Amount	Positions	Agt./Atty.	Est. FTE	Amount
Violent Crime, the Opioid Epidemic, and Transnational Organized Crime		0	0	0	5,343	0	0	0	418	0	0	0	5,761
<b>Total Program Increases</b>		<b>0</b>	<b>0</b>	<b>0</b>	<b>5,343</b>	<b>0</b>	<b>0</b>	<b>0</b>	<b>418</b>	<b>0</b>	<b>0</b>	<b>0</b>	<b>5,761</b>

Program Offsets	Location of Description by Program Activity	Investigations				Prosecutions				Total Offsets			
		Positions	Agt./Atty.	Est. FTE	Amount	Positions	Agt./Atty.	Est. FTE	Amount	Positions	Agt./Atty.	Est. FTE	Amount
No Program Offsets													
<b>Total Program Offsets</b>													

**Justifications for Technical and Base Adjustments**  
 Interagency Crime & Drug Enforcement  
 Salaries and Expenses  
 (Dollars in Thousands)

	Positions	Estimate FTE	Amount
<b>Pay and Benefits</b>			
1 <u>2018 Pay Raise - 1.9%</u> This request provides for a proposed 1.9 percent pay raise to be effective in January of 2018. The amount request, \$4,268, represents the pay amounts for 3/4 of the fiscal year plus appropriate benefits (\$2,392 for pay and \$1,876 for benefits).	0	0	4,268
2 <u>Annualization of 2017 Pay Raise - 2.88%</u> This pay annualization represents first quarter amounts (October through December) of the 2017 pay increase of 2.88% included in the 2017 Appropriation. The amount requested \$2,876, represents the pay amounts for 1/4 of the fiscal year plus appropriate benefits (\$1,612 for pay and \$1,264 for benefits).	0	0	2,876
3 <u>Health Insurance</u> Effective January 2018, the component's contribution to Federal employees' health insurance increases by 8 percent. Applied against the 2017 estimate of \$20,390, the additional amount required is \$1,631.	0	0	1,631
4 <u>Position Rightsizing Adjustment</u> As directed by OMB Memorandum M-17-22, Department components will eliminate vacancies to reflect on-board levels.	-[65]	-[12]	0
5 <u>Retirement</u> Agency retirement contributions increase as employees under CSRS retire and are replaced by FERS employees. Based on U.S. Department of Justice Agency estimates, we project that the DOJ workforce will convert from CSRS to FERS at a rate of 0.8 percent per year, for both LEO and Non-LEO, based on the past 5 years of DOJ retirement data. The requested increase of \$245 is necessary to meet our increased retirement obligations as a result of this conversion.	0	0	245
<b>Subtotal, Pay and Benefits</b>	<b>-[65]</b>	<b>-[12]</b>	<b>9,020</b>
<b>Domestic Rent and Facilities</b>			
1 <u>GSA Rent</u> GSA will continue to charge rental rates that approximate those charged to commercial tenants for equivalent space and related services. The requested increase of \$170 is required to meet our commitment to GSA. The costs associated with GSA rent were derived through the use of an automated system, which uses the latest inventory data, including rate increases to be effective FY 2018 for each building currently occupied by Department of Justice components, as well as the costs of new space to be occupied. GSA provides data on the rate increases.	0	0	170
2 <u>Guard Service</u> This includes Department of Homeland Security (DHS) Federal Protective Service charges, Justice Protective Service charges and other security services across the country. The requested increase of \$22 is required to meet these commitments.	0	0	22
<b>Subtotal, Domestic Rent and Facilities</b>	<b>0</b>	<b>0</b>	<b>192</b>
<b>TOTAL DIRECT TECHNICAL and BASE ADJUSTMENTS</b>	<b>-[65]</b>	<b>-[12]</b>	<b>9,212</b>

**Crosswalk of 2016 Availability**  
 Interagency Crime & Drug Enforcement  
 Salaries and Expenses  
 (Dollars in Thousands)

Program Activity	FY 2016 Enacted			Reprogramming/Transfers			Carryover	Recoveries/ Refunds	FY 2016 Availability		
	Positions	Actual FTE	Amount	Positions	Actual FTE	Amount	Amount	Amount	Positions	Actual FTE	Amount
Investigations	[1,885]	[1,884]	356,597	0	0	0	5,589	2,040	[1,885]	[1,884]	364,226
Prosecutions	[1,050]	[998]	155,403	0	0	0	2,396	874	[1,050]	[998]	158,673
<b>Total Direct</b>	<b>[2,935]</b>	<b>[2,882]</b>	<b>512,000</b>	<b>0</b>	<b>0</b>	<b>0</b>	<b>7,985</b>	<b>2,914</b>	<b>[2,935]</b>	<b>[2,882]</b>	<b>522,899</b>
Balance Rescission			0			0	0	0			0
Total Direct with Rescission			512,000			0	7,985	2,914			522,899
Reimbursable FTE		0			0					0	
Total Direct and Reimb. FTE		[2,882]			0					[2,882]	
Other FTE:											
LEAP FTE		0			0					0	
Overtime		0			0					0	
Grand Total, FTE		[2,882]			0					[2,882]	

**Reprogramming/Transfers:**

**Carryover:**

OCDETF carried forward \$7,985M in unobligated balances from FY 2015 to FY 2016 from no-year appropriation.

**Recoveries/Refunds:**

OCDETF recovered and collected \$2,914M in prior year obligations from no-year appropriation.

**Crosswalk of 2017 Availability**  
 Interagency Crime & Drug Enforcement  
 Salaries and Expenses  
 (Dollars in Thousands)

Program Activity	FY 2017 Continuing Resolution			Reprogramming/Transfers			Carryover	Recoveries/ Refunds	FY 2017 Availability		
	Positions	Est. FTE	Amount	Positions	Est. FTE	Amount	Amount	Amount	Positions	Est. FTE	Amount
Investigations	[1,885]	[1,884]	355,919	0	0	0	4,075	2,100	[1,885]	[1,884]	362,094
Prosecutions	[1,050]	[998]	155,108	0	0	0	1,747	900	[1,050]	[998]	157,755
<b>Total Direct</b>	<b>[2,935]</b>	<b>[2,882]</b>	<b>511,027</b>	<b>0</b>	<b>0</b>	<b>0</b>	<b>5,822</b>	<b>3,000</b>	<b>[2,935]</b>	<b>[2,882]</b>	<b>519,849</b>
Balance Rescission			0			0	0	0			0
Total Direct with Rescission			511,027			0	5,822	3,000			519,849
Reimbursable FTE		0			0					0	
Total Direct and Reimb. FTE		[2,882]			0					[2,882]	
Other FTE:											
LEAP FTE		0			0					0	
Overtime		0			0					0	
Grand Total, FTE		[2,882]			0					[2,882]	

**Reprogramming/Transfers:**

**Carryover:**

OCDETF carried forward \$5,822M in unobligated balances from FY 2016 to FY 2017 from no-year appropriation.

**Recoveries/Refunds:**

OCDETF anticipates recovering and collection \$3M in prior year obligations from no-year appropriation.

### Summary of Reimbursable Resources

Interagency Crime & Drug Enforcement

Salaries and Expenses

(Dollars in Thousands)

Collections by Source	2016 Actual			2017 Estimate			2018 Request			Increase/Decrease		
	Reimb. Pos.	Reimb. FTE	Amount	Reimb. Pos.	Reimb. FTE	Amount	Reimb. Pos.	Reimb. FTE	Amount	Reimb. Pos.	Reimb. FTE	Amount
Asset Forfeiture Fund	0	0	45,551	0	0	44,034	0	0	44,034	0	0	0
<b>Budgetary Resources</b>	<b>0</b>	<b>0</b>	<b>45,551</b>	<b>0</b>	<b>0</b>	<b>44,034</b>	<b>0</b>	<b>0</b>	<b>44,034</b>	<b>0</b>	<b>0</b>	<b>0</b>

Obligations by Program Activity	2016 Actual			2017 Estimate			2018 Request			Increase/Decrease		
	Reimb. Pos.	Reimb. FTE	Amount	Reimb. Pos.	Reimb. FTE	Amount	Reimb. Pos.	Reimb. FTE	Amount	Reimb. Pos.	Reimb. FTE	Amount
Investigations	0	0	41,377	0	0	39,592	0	0	39,592	0	0	0
Prosecutions	0	0	4,174	0	0	4,442	0	0	4,442	0	0	0
<b>Budgetary Resources</b>	<b>0</b>	<b>0</b>	<b>45,551</b>	<b>0</b>	<b>0</b>	<b>44,034</b>	<b>0</b>	<b>0</b>	<b>44,034</b>	<b>0</b>	<b>0</b>	<b>0</b>



**Detail of Permanent Positions by Category**

Interagency Crime & Drug Enforcement

Salaries and Expenses

(Dollars in Thousands)

Category	FY 2016 Enacted		FY 2017 Continuing Resolution		FY 2018 Request				
	Direct Pos.	Reimb. Pos.	Direct Pos.	Reimb. Pos.	ATBs	Program Increases	Program Offsets	Total Direct Pos.	Total Reimb. Pos.
Intelligence Series (132)	[148]	0	[148]	0	0	0	0	[148]	0
Personnel Management (0200-0260)	[1]	0	[1]	0	0	0	0	[1]	0
Clerical and Office Services (0300-0399)	[519]	0	[519]	0	-[20]	0	0	[499]	0
Accounting and Budget (500-599)	[25]	0	[25]	0	0	0	0	[25]	0
Paralegals / Other Law (900-998)	[77]	0	[77]	0	0	0	0	[77]	0
Attorneys (905)	[573]	0	[573]	0	0	0	0	[573]	0
Information & Arts (1000-1099)	[11]	0	[11]	0	0	0	0	[11]	0
Business & Industry (1100-1199)	[6]	0	[6]	0	0	0	0	[6]	0
Misc. Inspectors/Investigative Assistants (1802)	[88]	0	[88]	0	0	0	0	[88]	0
Criminal Investigative Series (1811)	[1,366]	0	[1,366]	0	-[45]	0	0	[1,321]	0
Information Technology Mgmt (2210-2299)	[13]	0	[13]	0	0	0	0	[13]	0
Motor Vehicle Operations (5703)	[108]	0	[108]	0	0	0	0	[108]	0
<b>Total</b>	<b>[2,935]</b>	<b>0</b>	<b>[2,935]</b>	<b>0</b>	<b>-[65]</b>	<b>0</b>	<b>0</b>	<b>[2,870]</b>	<b>0</b>
Headquarters Washington D.C.	[65]	0	[65]	0	0	0	0	[65]	0
US Fields	[2,862]	0	[2,862]	0	-[65]	0	0	[2,797]	0
Foreign Field	[8]	0	[8]	0	0	0	0	[8]	0
<b>Total</b>	<b>[2,935]</b>	<b>0</b>	<b>[2,935]</b>	<b>0</b>	<b>-[65]</b>	<b>0</b>	<b>0</b>	<b>[2,870]</b>	<b>0</b>

**Financial Analysis of Program Changes**  
 Interagency Crime & Drug Enforcement  
 Salaries and Expenses  
 (Dollars in Thousands)

Grades	Investigations				Prosecutions				Total Program Changes	
	Program Increases		Program Decreases		Program Increases		Program Decreases		Positions	Amount
	Positions	Amount	Positions	Amount	Positions	Amount	Positions	Amount		
Ungraded	0	5343	0	0	0	418	0	0	0	5761
<b>Total Positions and Annual Amount</b>	<b>0</b>	<b>5,343</b>	<b>0</b>	<b>0</b>	<b>0</b>	<b>418</b>	<b>0</b>	<b>0</b>	<b>0</b>	<b>5,761</b>
Lapse (-)	0	0	0	0	0	0	0	0	0	0
11.5 - Other personnel compensation		0		0		0		0		0
<b>Total FTEs and Personnel Compensation</b>	<b>0</b>	<b>5,343</b>	<b>0</b>	<b>0</b>	<b>0</b>	<b>418</b>	<b>0</b>	<b>0</b>	<b>0</b>	<b>5,761</b>
No BOCs		0		0		0		0		0
<b>Total Program Change Requests</b>	<b>0</b>	<b>5,343</b>	<b>0</b>	<b>0</b>	<b>0</b>	<b>418</b>	<b>0</b>	<b>0</b>	<b>0</b>	<b>5,761</b>

### Summary of Requirements by Object Class

Interagency Crime & Drug Enforcement

Salaries and Expenses

(Dollars in Thousands)

Object Class	FY 2016 Actual		FY 2017 Continuing		FY 2018 Request		Increase/Decrease	
	Act. FTE	Amount	Direct FTE	Amount	Direct FTE	Amount	Direct FTE	Amount
11.1 - Full-time permanent	[2,882]	287,086	[2,882]	286,719	[2,870]	293,863	-12	7,144
11.3 - Other than full-time permanent	0	895	0	903	0	903	0	0
11.5 - Other personnel compensation	0	36,982	0	37,318	0	37,318	0	0
<i>Overtime</i>	0	0	0	0	0	0	0	0
<i>Other Compensation</i>	0	0	0	0	0	0	0	0
11.8 - Special personal services payments	0	0	0	0	0	0	0	0
<b>Total</b>	<b>[2,882]</b>	<b>324,963</b>	<b>[2,882]</b>	<b>324,940</b>	<b>[2,870]</b>	<b>332,084</b>	<b>-12</b>	<b>7,144</b>
<b>Other Object Classes</b>								
12.1 - Civilian personnel benefits		114,105		115,141		117,017	0	1,876
21.0 - Travel and transportation of persons		4,809		4,903		6,343	0	1,440
22.0 - Transportation of things		77		78		78	0	0
23.1 - Rental payments to GSA		6,970		7,033		7,225	0	192
23.2 - Rental payments to others		186		188		188	0	0
23.3 - Communications, utilities, and miscellaneous charges		5,354		5,403		6,843	0	1,440
24.0 - Printing and reproduction		73		74		74	0	0
25.1 - Advisory and assistance services		8,469		8,623		8,623	0	0
25.2 - Other services from non-federal sources		16,602		0		0	0	0
25.3 - Other goods and services from federal sources		28,653		46,626		39,245	0	-7,381
25.4 - Operation and maintenance of facilities		1,058		1,069		1,069	0	0
25.5 - Research and development of contracts		3		3		3	0	0
25.6 - Medical care		2		2		2	0	0
25.7 - Operation and maintenance of equipment		1,054		1,064		1,064	0	0
25.8 - Subsistence and support of persons		156		157		157	0	0
26.0 - Supplies and materials		1,346		1,357		1,357	0	0
31.0 - Equipment		2,973		3,000		4,440	0	1,440
32.0 - Land and structures		185		186		186	0	0
42.0 - Insurance claims and indemnities		2		2		2	0	0
<b>Total Obligations</b>		<b>517,040</b>		<b>519,849</b>		<b>526,000</b>	<b>0</b>	<b>6,151</b>
<b>Net of:</b>								
Unobligated Balance, Start-of-Year		-7,985		-5,822		0	0	5,822
Transfers/Reprogramming		0		0		0	0	0
Recoveries/Refunds		-2,914		-3,000		0	0	3,000
Balance Rescission		0		0		0	0	0
Unobligated End-of-Year, Available		5,822		0		0	0	0
Unobligated End-of-Year, Expiring		37		0		0	0	0
<b>Total Direct Requirements</b>		<b>512,000</b>		<b>511,027</b>		<b>526,000</b>		<b>14,973</b>
Reimbursable FTE								
Full-Time Permanent	0		0		0		0	0

**Status of Congressionally Requested Studies, Reports, and Evaluations**  
Interagency Crime & Drug Enforcement

1. The Committee directs the Department to submit with its fiscal year 2018 budget request an updated report on FTE devoted to OCDETF cases at the level of detail provided in its September 9, 2015 report to the Committee. The report should include actual and projected investigative and prosecutorial FTE devoted to OCDETF cases for fiscal years 2016–2018, broken out by agency and funding source.