

A: Organizational Chart

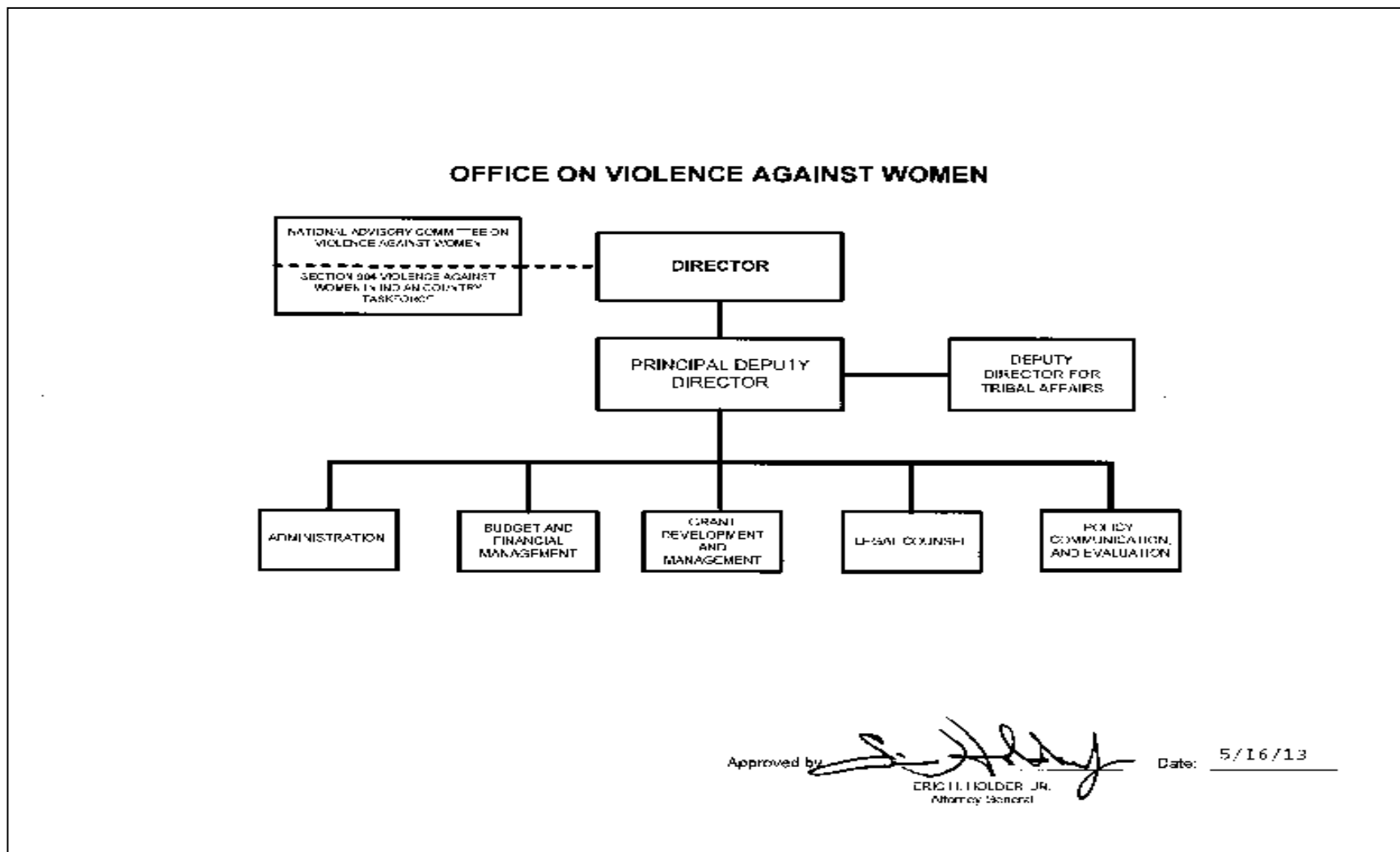


Exhibit A - Organizational Chart

B. Summary of Requirements

Summary of Requirements
Office on Violence Against Women
Grant Programs
(Dollars in Thousands)

| | FY 2022 Request | | |
|--|------------------|-----|-----------|
| | Direct Positions | FTE | Amount |
| 2020 Enacted | 0 | 0 | 502,500 |
| 2020 Balance Rescission (if applicable) | | | 0 |
| Total 2020 Enacted (with Rescission) | 0 | 0 | 502,500 |
| 2021 Enacted | 0 | 0 | 513,500 |
| 2021 Balance Rescission (if applicable) | | | 0 |
| Total 2021 Enacted (with Rescission) | 0 | 0 | 513,500 |
| Technical Adjustments | | | |
| Restoration of FY 2021 Balance Rescission | 0 | 0 | 0 |
| Total Technical Adjustments | 0 | 0 | 0 |
| Base Adjustments | | | |
| Total Base Adjustments | 0 | 0 | 0 |
| Total Technical and Base Adjustments | 0 | 0 | 0 |
| 2022 Current Services | 0 | 0 | 513,500 |
| Program Changes | | | |
| Program Increases | | | |
| Grants to Combat Violence Against Women (STOP) | 0 | 0 | 185,000 |
| Research and Eval. Violence Against Women (NIJ) | 0 | 0 | 1,000 |
| Transitional Housing | 0 | 0 | 40,000 |
| Consolidated Youth Oriented Program | 0 | 0 | 6,000 |
| Engaging Men and Youth in Prevention | 0 | 0 | 10,000 |
| Improving Criminal Justice Responses Program/aka Arrest | 0 | 0 | 27,000 |
| Rural Dom. Violence & Child Abuse Enforcement Asst. | 0 | 0 | 2,500 |
| Legal Assistance Program | 0 | 0 | 33,000 |
| Grants to Support Families in the Justice System | 0 | 0 | 10,000 |
| Campus Violence | 0 | 0 | 20,000 |
| Disabilities Program | 0 | 0 | 11,000 |
| National Deaf Services | 0 | 0 | 10,000 |
| Elder Program | 0 | 0 | 4,500 |
| Sexual Assault Services | 0 | 0 | 59,000 |
| Tribal Special Domestic Violence Criminal Jurisdiction | 0 | 0 | 1,500 |
| Restorative Justice | 0 | 0 | 25,000 |
| Supporting Transgender Victims | 0 | 0 | 2,000 |
| Culturally-Specific Services | 0 | 0 | 20,000 |
| Community-Based Organizational Capacity Building Program | 0 | 0 | 5,000 |
| Underserved Populations Program | 0 | 0 | 6,000 |
| Emerging Issues in Violence Against Women | 0 | 0 | 5,000 |
| Tribal Special Assistant United States Attorneys | 0 | 0 | 3,000 |
| Subtotal, Increases | 0 | 0 | 486,500 |
| Subtotal, Offsets | 0 | 0 | 0 |
| Total Program Changes | 0 | 0 | 486,500 |
| 2022 Total Request | 0 | 0 | 1,000,000 |
| 2022 Balance Rescission (if applicable) | | | -15,000 |
| 2022 Total Request (with Rescission) | 0 | 0 | 985,000 |
| 2021 - 2022 Total Change | 0 | 0 | 486,500 |

B. Summary of Requirements

Summary of Requirements
Office on Violence Against Women
Grant Programs
(Dollars in Thousands)

| Program Activity | 2020 Enacted | | | 2021 Enacted | | | 2022 Technical and Base Adjustments | | | 2022 Current Services | | |
|--|--------------|------------|----------------|--------------|----------|----------------|-------------------------------------|----------|----------|-----------------------|----------|----------------|
| | Direct Pos. | Actual FTE | Amount | Direct Pos. | Est. FTE | Amount | Direct Pos. | Est. FTE | Amount | Direct Pos. | Est. FTE | Amount |
| Grants to Combat Violence Against Women (STOP) | | | 215,000 | | | 215,000 | | | | | | 215,000 |
| Research and Eval. Violence Against Women (NIJ) | | | 2,500 | | | 2,500 | | | | | | 2,500 |
| Transitional Housing | | | 37,000 | | | 40,000 | | | | | | 40,000 |
| Consolidated Youth Oriented Program | | | 11,500 | | | 12,000 | | | | | | 12,000 |
| Engaging Men and Youth in Prevention | | | | | | | | | | | | 0 |
| Improving Criminal Justice Responses Program/aka Arrest | | | 53,000 | | | 53,000 | | | | | | 53,000 |
| Homicide Reduction Initiative | | | [4,000] | | | [4,000] | | | | | | [4,000] |
| Domestic Violence Firearms Lethality Reduction | | | | | | | | | | | | |
| Rural Dom. Violence & Child Abuse Enforcement Asst. | | | 43,500 | | | 45,000 | | | | | | 45,000 |
| Legal Assistance Program | | | 46,000 | | | 47,000 | | | | | | 47,000 |
| Grants to Support Families in the Justice System | | | 17,000 | | | 18,000 | | | | | | 18,000 |
| Campus Violence | | | 20,000 | | | 20,000 | | | | | | 20,000 |
| HBCU, Hispanic-Serving Institutions, Tribal Colleges Set-aside | | | | | | | | | | | | |
| Disabilities Program | | | 6,000 | | | 6,500 | | | | | | 6,500 |
| National Deaf Services | | | | | | | | | | | | 0 |
| Elder Program | | | 5,000 | | | 5,500 | | | | | | 5,500 |
| Sexual Assault Services | | | 38,000 | | | 41,000 | | | | | | 41,000 |
| Indian Country - Sexual Assault Clearinghouse | | | 500 | | | 500 | | | | | | 500 |
| National Resource Center on Workplace Responses | | | 1,000 | | | 1,000 | | | | | | 1,000 |
| Research on Violence Against Indian Women (NIJ) | | | 1,000 | | | 1,000 | | | | | | 1,000 |
| Tribal Special Domestic Violence Criminal Jurisdiction | | | 4,000 | | | 4,000 | | | | | | 4,000 |
| Rape Survivor Child Custody Act Program | | | 1,500 | | | 1,500 | | | | | | 1,500 |
| Restorative Justice | | | | | | | | | | | | 0 |
| Supporting Transgender Victims | | | | | | | | | | | | 0 |
| Culturally-Specific Services | | | | | | | | | | | | 0 |
| Community-Based Organizational Capacity Building Program | | | | | | | | | | | | 0 |
| Underserved Populations Program | | | | | | | | | | | | 0 |
| Emerging Issues in Violence Against Women | | | | | | | | | | | | 0 |
| Tribal Special Assistant United States Attorneys | | | | | | | | | | | | 0 |
| VAWA Tribal Government Grants Program | | | [40,920] | | | [41,590] | | | | | | [41,590] |
| VAWA Tribal Coalitions Grants | | | [6,869] | | | [6,899] | | | | | | [6,899] |
| Total Direct | 0 | 0 | 502,500 | 0 | 0 | 513,500 | 0 | 0 | 0 | 0 | 0 | 513,500 |
| Balance Rescission | | | 0 | | | 0 | | | | | | 0 |
| Total Direct with Rescission | | | 502,500 | | | 513,500 | | | 0 | | | 513,500 |
| Reimbursable FTE | | 0 | 1,246 | | 0 | | | 0 | | | 0 | 0 |
| Total Direct and Reimb. FTE | | 0 | 503,746 | | | 513,500 | | | 0 | | | 513,500 |
| Other FTE: | | | | | | | | | | | | |
| LEAP | | 0 | | | 0 | | | 0 | | | 0 | |
| Overtime | | 0 | | | 0 | | | 0 | | | 0 | |
| Grand Total, FTE | | 0 | | | 0 | | | 0 | | | 0 | |

B. Summary of Requirements

| Program Activity | 2022 Increases | | | 2022 Offsets | | | 2022 Request | | |
|--|----------------|----------|----------------|--------------|----------|----------|--------------|----------|------------------|
| | Direct Pos. | Est. FTE | Amount | Direct Pos. | Est. FTE | Amount | Direct Pos. | Est. FTE | Amount |
| Grants to Combat Violence Against Women (STOP) | | | 185,000 | | | | | | 400,000 |
| Research and Eval. Violence Against Women (NIJ) | | | 1,000 | | | | | | 3,500 |
| Transitional Housing | | | 40,000 | | | | | | 80,000 |
| Consolidated Youth Oriented Program | | | 6,000 | | | | | | 18,000 |
| Engaging Men and Youth in Prevention | | | 10,000 | | | | | | 10,000 |
| Improving Criminal Justice Responses Program/aka Arrest | | | 27,000 | | | | | | 80,000 |
| Homicide Reduction Initiative | | | 0 | | | | | | [4,000] |
| Domestic Violence Firearms Lethality Reduction | | | [8,000] | | | | | | [8,000] |
| Rural Dom. Violence & Child Abuse Enforcement Asst. | | | 2,500 | | | | | | 47,500 |
| Legal Assistance Program | | | 33,000 | | | | | | 80,000 |
| Grants to Support Families in the Justice System | | | 10,000 | | | | | | 28,000 |
| Campus Violence | | | 20,000 | | | | | | 40,000 |
| HBCU, Hispanic-Serving Institutions, Tribal Colleges Set-aside | | | [20,000] | | | | | | [20,000] |
| Disabilities Program | | | 11,000 | | | | | | 17,500 |
| National Deaf Services | | | 10,000 | | | | | | 10,000 |
| Elder Program | | | 4,500 | | | | | | 10,000 |
| Sexual Assault Services | | | 59,000 | | | | | | 100,000 |
| Indian Country - Sexual Assault Clearinghouse | | | 0 | | | | | | 500 |
| National Resource Center on Workplace Responses | | | 0 | | | | | | 1,000 |
| Research on Violence Against Indian Women (NIJ) | | | 0 | | | | | | 1,000 |
| Tribal Special Domestic Violence Criminal Jurisdiction | | | 1,500 | | | | | | 5,500 |
| Rape Survivor Child Custody Act Program | | | 0 | | | | | | 1,500 |
| Restorative Justice | | | 25,000 | | | | | | 25,000 |
| Supporting Transgender Victims | | | 2,000 | | | | | | 2,000 |
| Culturally-Specific Services | | | 20,000 | | | | | | 20,000 |
| Community-Based Organizational Capacity Building Program | | | 5,000 | | | | | | 5,000 |
| Underserved Populations Program | | | 6,000 | | | | | | 6,000 |
| Emerging Issues in Violence Against Women | | | 5,000 | | | | | | 5,000 |
| Tribal Special Assistant United States Attorneys | | | 3,000 | | | | | | 3,000 |
| VAWA Tribal Government Grants Program | | | | | | | | | [71,950] |
| VAWA Tribal Coalitions Grants | | | | | | | | | [12,143] |
| Total Direct | 0 | 0 | 486,500 | 0 | 0 | 0 | 0 | 0 | 1,000,000 |
| Balance Rescission | | | 0 | | | -15,000 | | | -15,000 |
| Total Direct with Rescission | | | 0 | | | -15,000 | | | 985,000 |
| Reimbursable FTE | | 0 | 0 | | 0 | | | 0 | 0 |
| Total Direct and Reimb. FTE | | 0 | 0 | 0 | 0 | 0 | 0 | 0 | 985,000 |
| Other FTE: | | | | | | | | | |
| LEAP | | 0 | | | 0 | | | 0 | |
| Overtime | | 0 | | | 0 | | | 0 | |
| Grand Total, FTE | | 0 | | | 0 | | | 0 | |

C. Program Changes by Decision Unit

FY 2022 Program Changes by Decision Unit

Office on Violence Against Women

Salaries and Expenses

(Dollars in Thousands)

| Program Increases | Location of Description in Narrative | Prevention and Prosecution of Violence Against Women | | | |
|--|--------------------------------------|--|-------------|----------|----------------|
| | | Direct Pos. | Agt./ Atty. | Est. FTE | Amount |
| Grants to Combat Violence Against Women (STOP) | 71 | | | | 185,000 |
| Research and Eval. Violence Against Women (NIJ) | 73 | | | | 1,000 |
| Transitional Housing | 75 | | | | 40,000 |
| Consolidated Youth Oriented Program | 78 | | | | 6,000 |
| Engaging Men and Youth in Prevention | 80 | | | | 10,000 |
| Improving Criminal Justice Responses Program/aka Arrest | 82 | | | | 27,000 |
| Rural Dom. Violence & Child Abuse Enforcement Asst. | 85 | | | | 2,500 |
| Legal Assistance Program | 87 | | | | 33,000 |
| Grants to Support Families in the Justice System | 89 | | | | 10,000 |
| Campus Violence | 92 | | | | 20,000 |
| HBCU, Hispanic-Serving Institutions, Tribal Colleges Set-aside | | | | | [20,000] |
| Disabilities Program | 95 | | | | 11,000 |
| National Deaf Services | 97 | | | | 10,000 |
| Elder Program | 99 | | | | 4,500 |
| Sexual Assault Services | 101 | | | | 59,000 |
| Tribal Special Domestic Violence Criminal Jurisdiction | 103 | | | | 1,500 |
| Restorative Justice | 105 | | | | 25,000 |
| Supporting Transgender Victims | 107 | | | | 2,000 |
| Culturally-Specific Services | 109 | | | | 20,000 |
| Community-Based Organizational Capacity Building Program | 111 | | | | 5,000 |
| Underserved Populations Program | 113 | | | | 6,000 |
| Emerging Issues in Violence Against Women | 115 | | | | 5,000 |
| Tribal Special Assistant United States Attorneys | 117 | | | | 3,000 |
| Total Program Increases | | 0 | 0 | 0 | 486,500 |

D. Resources by DOJ Strategic Goal and Strategic Objective

Resources by Department of Justice Strategic Goal/Objective
 Office on Violence Against Women
 Grant Programs
 (Dollars in Thousands)

| Strategic Goal and Strategic Objective | | 2020 Enacted | | 2021 Enacted | | 2022 Current Services | | 2022 Increases | | 2022 Offsets | | 2022 Total Request | |
|--|---|-------------------------|------------------|-------------------------|------------------|-------------------------|------------------|-------------------------|------------------|-------------------------|------------------|-------------------------|------------------|
| | | Direct/ Reimb FTE | Direct Amount | Direct/ Reimb FTE | Direct Amount | Direct/ Reimb FTE | Direct Amount | Direct/ Reimb FTE | Direct Amount | Direct/ Reimb FTE | Direct Amount | Direct/ Reimb FTE | Direct Amount |
| Goal 3 | Reduce Violent Crime and Promote Public Safety | | | | | | | | | | | | |
| 3.1 | Combat violent crime, promote safe communities, and uphold the rights of victims of crime | 0 | 502,500 | 0 | 513,500 | 0 | 0 | 0 | 0 | 0 | 0 | 0 | 0 |
| | Subtotal, Goal 3 | 0 | 502,500 | 0 | 513,500 | 0 | 0 | 0 | 0 | 0 | 0 | 0 | 0 |
| | TOTAL | 0 | 502,500 | 0 | 513,500 | 0 | 0 | 0 | 0 | 0 | 0 | 0 | 0 |

Note: Excludes Balance Rescission and/or Supplemental Appropriations

F. Crosswalk of 2020 Availability

Crosswalk of 2020 Availability
Office on Violence Against Women
Grant Programs
(Dollars in Thousands)

| Program Activity | FY 2020 Enacted | | | Reprogramming/Transfers | | | Carryover | Recoveries/ Refunds | 2020 Availability | | |
|--|-----------------|------------|----------------|-------------------------|------------|---------------|---------------|------------------------|-------------------|------------|----------------|
| | Direct Pos. | Estim. FTE | Amount | Direct Pos. | Estim. FTE | Amount | Amount | Amount | Direct Pos. | Estim. FTE | Amount |
| Prevention and Prosecution of Violence Against Women | | | | | | | | | | | |
| Grants to Combat Violence Against Women (STOP) | | | 215,000 | | | | 4,858 | 5,750 | | | 225,608 |
| Research and Eval. Violence Against Women (NIJ) | | | 2,500 | | | -2,500 | | 0 | | | 0 |
| Transitional Housing | | | 37,000 | | | | 903 | 1,973 | | | 39,876 |
| Consolidated Youth Oriented Program | | | 11,500 | | | | 431 | 671 | | | 12,602 |
| Improving Criminal Justice Responses Program Solicitation/aka Arrest | | | 53,000 | | | | 1,689 | 2,589 | | | 57,278 |
| Homicide Reduction Initiative | | | [4,000] | | | | 3,689 | 100 | | | 3,789 |
| Rural Dom. Violence & Child Abuse Enforcement Asst. | | | 43,500 | | | | 1,965 | 1,275 | | | 46,739 |
| Legal Assistance Program | | | 46,000 | | | | 783 | 744 | | | 47,527 |
| Grants to Support Families in the Justice System | | | 17,000 | | | | 355 | 1,054 | | | 18,409 |
| Campus Violence | | | 20,000 | | | | 640 | 554 | | | 21,193 |
| Disabilities Program | | | 6,000 | | | | 128 | 245 | | | 6,373 |
| Elder Program | | | 5,000 | | | | 49 | 473 | | | 5,522 |
| Sexual Assault Services | | | 38,000 | | | | 1,515 | 1,644 | | | 41,159 |
| Indian Country - Sexual Assault Clearinghouse | | | 500 | | | | 0 | 32 | | | 532 |
| National Resource Center on Workplace Responses | | | 1,000 | | | | 0 | 0 | | | 1,000 |
| Research on Violence Against Indian Women | | | 1,000 | | | | 7 | 0 | | | 1,007 |
| Tribal Special Domestic Violence Criminal Jurisdiction | | | 4,000 | | | | 11 | 108 | | | 4,119 |
| Rape Survivor Child Custody Act | | | 1,500 | | | | 9 | 137 | | | 1,645 |
| Tribal Registry Program | | | 0 | | | | 3,910 | 0 | | | 3,910 |
| Derived from CVF Cap | | | [435,000] | | | | | 0 | | | [435,000] |
| VAWA Tribal Government Grants Program | | | [40,920] | | | -154 | [4,716] | [2,239] | | | -154 |
| VAWA Tribal Coalitions Grants | | | [6,869] | | | | [336] | [281] | | | 0 |
| Inactive OJP Administered Programs | | | 0 | | | | 3 | 27 | | | 30 |
| NIJ R&D | | | | | | | 172 | 269 | | | 440 |
| JMD Mandatory transfer out (taken from M&A) | | | | | | -12 | | | | | |
| OVW Management and Administration | | | [24,716] | | | | 4,957 | 1,221 | | | 6,178 |
| Total Direct | 0 | 0 | 502,500 | 0 | 0 | -2,666 | 26,073 | 18,864 | 0 | 0 | 544,783 |
| Balance Rescission | | | | | | | | | | | |
| Total Direct with Rescission | | | 502,500 | | | | 26,073 | 18,864 | | | 544,783 |
| Reimbursable FTE | | 0 | 0 | | 0 | | 7,000 | | | 0 | 7,000 |
| Total Direct and Reimb. FTE | | 0 | 502,500 | | 0 | -2,666 | 33,073 | 18,864 | | 0 | 551,771 |
| Other FTE: | | | | | | | | | | | |
| LEAP | | 0 | | | 0 | | 0 | | | 0 | |
| Overtime | | 0 | | | 0 | | 0 | | | 0 | |
| Grand Total, FTE | | 0 | 502,500 | | 0 | -2,666 | 33,073 | 18,864 | 0 | 0 | 551,771 |

Reprogramming/Transfers

Carryover: Carryover displays grant funding carryforward

Recoveries/Refunds:

G. Crosswalk of 2021 Availability

Crosswalk of 2021 Availability
Office on Violence Against Women
Salaries and Expenses
(Dollars in Thousands)

| Program Activity | FY 2021 Enacted | | | Reprogramming/Transfers | | | Carryover | Recoveries/ Refunds | 2021 Availability | | |
|--|-----------------|------------|----------------|-------------------------|------------|---------------|---------------|------------------------|-------------------|------------|----------------|
| | Direct Pos. | Estim. FTE | Amount | Direct Pos. | Estim. FTE | Amount | Amount | Amount | Direct Pos. | Estim. FTE | Amount |
| Prevention and Prosecution of Violence Against Women | | | | | | | | | | | |
| Grants to Combat Violence Against Women (STOP) | | | 215,000 | | | | 6,076 | 0 | 0 | 0 | 221,076 |
| Research and Eval. Violence Against Women (NIJ) | | | 2,500 | | | -2,500 | 0 | | | | 0 |
| Transitional Housing | | | 40,000 | | | | 1,937 | | | | 41,937 |
| Consolidated Youth Oriented Program | | | 12,000 | | | | 238 | | | | 12,238 |
| Improving Criminal Justice Responses Program Solicitation/aka Arrest | | | 53,000 | | | | 2,081 | | | | 55,081 |
| Homicide Reduction Initiative | | | [4,000] | | | | 5,460 | | | | 5,460 |
| Rural Dom. Violence & Child Abuse Enforcement Asst. | | | 45,000 | | | | 523 | | | | 45,523 |
| Legal Assistance Program | | | 47,000 | | | | 576 | | | | 47,576 |
| Grants to Support Families in the Justice System | | | 18,000 | | | | 362 | | | | 18,362 |
| Campus Violence | | | 20,000 | | | | 627 | | | | 20,627 |
| Disabilities Program | | | 6,500 | | | | 141 | | | | 6,641 |
| Elder Program | | | 5,500 | | | | 87 | | | | 5,587 |
| Sexual Assault Services | | | 41,000 | | | | 3,017 | | | | 44,017 |
| Indian Country - Sexual Assault Clearinghouse | | | 500 | | | | 532 | | | | 1,032 |
| National Resource Center on Workplace Responses | | | 1,000 | | | | 0 | | | | 1,000 |
| Research on Violence Against Indian Women | | | 1,000 | | | | 7 | | | | 1,007 |
| Tribal Special Domestic Violence Criminal Jurisdiction | | | 4,000 | | | | 427 | | | | 4,427 |
| Rape Survivor Child Custody Act | | | 1,500 | | | | 145 | | | | 1,645 |
| NIJ R&D | | | | | | | 440 | | | | 440 |
| Inactive OJP Administered Programs | | | | | | | 3 | | | | 3 |
| Tribal Registry Program | | | | | | | 3,910 | | | | 3,910 |
| BIA Tribal SAUSA Project | | | | | | | 22 | | | | 22 |
| VAWA Tribal Government Grants Program | | | [41,590] | | | | [3,544] | | | | 0 |
| VAWA Tribal Coalitions Grants | | | [6,899] | | | | [167] | | | | 0 |
| Derived from CVF Cap | | | | | | | | | | | 0 |
| OVW Management and Administration | | | [26,275] | | | | 6,523 | | | | 0 |
| Total Direct | 0 | 0 | 513,500 | 0 | 0 | -2,500 | 33,132 | 0 | 0 | 0 | 544,132 |
| Balance Rescission | | | 0 | | | | | | | | 0 |
| Total Direct with Rescission | | | 513,500 | | | 0 | -2,500 | 33,132 | | | 544,132 |
| Reimbursable FTE | | 0 | | | 0 | | 0 | | | 0 | |
| Total Direct and Reimb. FTE | | 0 | 513,500 | | 0 | -2,500 | 33,132 | | | 0 | 544,132 |
| Other FTE: | | | | | | | | | | | |
| LEAP | | 0 | | | 0 | | 0 | | | 0 | |
| Overtime | | 0 | | | 0 | | 0 | | | 0 | |
| Grand Total, FTE | | 0 | 513,500 | | 0 | -2,500 | 33,132 | | | 0 | 544,132 |

Reprogramming/Transfers

Carryover:

Recoveries/Refunds:

H. Summary of Reimbursable Resources

Summary of Reimbursable Resources

Office on Violence Against Women

Grant Programs

(Dollars in Thousands)

| Collections by Source | 2020 Actual | | | 2021 Enacted | | | 2022 Request | | | Increase/Decrease | | |
|--|-------------|------------|--------------|--------------|------------|----------|--------------|------------|----------|-------------------|------------|----------|
| | Reimb. Pos. | Reimb. FTE | Amount | Reimb. Pos. | Reimb. FTE | Amount | Reimb. Pos. | Reimb. FTE | Amount | Reimb. Pos. | Reimb. FTE | Amount |
| Prevention and Prosecution of Violence Against Women | | | | | | | 0 | 0 | 0 | 0 | 0 | 0 |
| Management and Administration | 0 | 0 | 46 | 0 | 0 | | 0 | 0 | 0 | 0 | 0 | 0 |
| Rural Dom. Violence & Child Abuse Enforcement Asst. | 0 | 0 | 1,200 | 0 | 0 | | 0 | 0 | 0 | 0 | 0 | 0 |
| Transitional Housing | 0 | 0 | 0 | 0 | 0 | | 0 | 0 | 0 | 0 | 0 | 0 |
| Budgetary Resources | 0 | 0 | 1,246 | 0 | 0 | 0 | 0 | 0 | 0 | 0 | 0 | 0 |

| Obligations by Program Activity | 2020 Actual | | | 2021 Enacted | | | 2022 Request | | | Increase/Decrease | | |
|--|-------------|------------|--------------|--------------|------------|----------|--------------|------------|----------|-------------------|------------|----------|
| | Reimb. Pos. | Reimb. FTE | Amount | Reimb. Pos. | Reimb. FTE | Amount | Reimb. Pos. | Reimb. FTE | Amount | Reimb. Pos. | Reimb. FTE | Amount |
| Prevention and Prosecution of Violence Against Women | 0 | 0 | 1,246 | 0 | 0 | 0 | 0 | 0 | 0 | 0 | 0 | 0 |
| Budgetary Resources | 0 | 0 | 1,246 | 0 | 0 | 0 | 0 | 0 | 0 | 0 | 0 | 0 |

K. Summary of Requirements by Object Class

Summary of Requirements by Object Class

Office on Violence Against Women

Grant Programs

(Dollars in Thousands)

| Object Class | 2020 Actual | | 2021 Enacted | | 2022 Request | | Increase/Decrease | |
|--|-------------|----------------|--------------|----------------|--------------|------------------|-------------------|----------------|
| | Direct FTE | Amount | Direct FTE | Amount | Direct FTE | Amount | Direct FTE | Amount |
| 11.1 Full-Time Permanent | 70 | 7,440 | 80 | 8,925 | 133 | 12,341 | 53 | 3,415 |
| 11.3 Other than Full-Time Permanent | 0 | 530 | 0 | 505 | 0 | 505 | 0 | 0 |
| 11.5 Other Personnel Compensation | 0 | 351 | 0 | 217 | 0 | 217 | 0 | 0 |
| <i>Overtime</i> | 0 | 0 | 0 | 0 | 0 | 0 | 0 | 0 |
| <i>Other Compensation</i> | 0 | 0 | 0 | 0 | 0 | 0 | 0 | 0 |
| 11.8 Special Personal Services Payments | 0 | 2 | 0 | 0 | 0 | 0 | 0 | 0 |
| Total | 70 | 8,323 | 80 | 9,647 | 133 | 13,063 | 53 | 3,415 |
| Other Object Classes | | | | | | | | |
| 12.1 Civilian Personnel Benefits | | 2,706 | | 2,906 | | 4,094 | | 1,188 |
| 13.0 Benefits for former personnel | | 29 | | 0 | | 0 | | 0 |
| 21.0 Travel and Transportation of Persons | | 189 | | 551 | | 551 | | 0 |
| 22.0 Transportation of Things | | 18 | | 25 | | 25 | | 0 |
| 23.1 Rental Payments to GSA | | 1,899 | | 1,883 | | 3,336 | | 1,453 |
| 23.2 Rental Payments to Others | | 64 | | 63 | | 63 | | 0 |
| 23.3 Communications, Utilities, and Miscellaneous Charges | | 119 | | 189 | | 189 | | 0 |
| 24.0 Printing and Reproduction | | 37 | | 42 | | 42 | | 0 |
| 25.1 Advisory and Assistance Services | | 6,665 | | 7,438 | | 4,177 | | -3,261 |
| 25.2 Other Services from Non-Federal Sources | | 588 | | 166 | | 166 | | 0 |
| 25.3 Other Goods and Services from Federal Sources | | 3,758 | | 9,765 | | 6,508 | | -3,257 |
| 25.4 Operation and Maintenance of Facilities | | 0 | | 12 | | 12 | | 0 |
| 25.5 Research and Development Contracts | | 0 | | 0 | | 0 | | 0 |
| 25.6 Medical Care | | 8 | | 7 | | 7 | | 0 |
| 25.7 Operation and Maintenance of Equipment | | 2 | | 1 | | 1 | | 0 |
| 25.8 Subsistence and Support of Persons | | 0 | | 0 | | 0 | | 0 |
| 26.0 Supplies and Materials | | 56 | | 53 | | 53 | | 0 |
| 31.0 Equipment | | 17 | | 50 | | 50 | | 0 |
| 32.0 Land and Structures | | 0 | | 0 | | 0 | | 0 |
| 41.0 Grants, Subsidies, and Contributions | | 487,163 | | 513,834 | | 967,664 | | 453,830 |
| 42.0 Insurance Claims and Indemnities | | 0 | | 0 | | 0 | | 0 |
| Total Obligations | | 511,639 | | 546,632 | | 1,000,000 | | 453,368 |
| Net of: | | | | | | | | |
| Unobligated Balance, Start-of-Year | | -26,073 | | -33,132 | | 0 | | -33,132 |
| Transfers Out | | 2,666 | | 0 | | 0 | | 0 |
| Recoveries/Refunds | | -18,864 | | 0 | | 0 | | 0 |
| Balance Rescission | | 0 | | 0 | | -15,000 | | [-15,000] |
| Unobligated End-of-Year, Available | | 33,132 | | 0 | | 0 | | 0 |
| Unobligated End-of-Year, Expiring | | 0 | | 0 | | 0 | | 0 |
| Total Direct Requirements | 0 | 502,500 | 0 | 513,500 | 0 | 985,000 | 0 | 420,236 |
| Reimbursable FTE | | | | | | | | |
| Full-Time Permanent | 0 | 0 | 0 | 0 | 0 | 0 | 0 | 0 |
| 23.1 Rental Payments to GSA (Reimbursable) | | 0 | | 0 | | 0 | | 0 |
| 25.3 Other Goods and Services from Federal Sources - DHS Security (Reimbursable) | | 0 | | 0 | | 0 | | 0 |

^{1/} Non-SES/SL/ST Salary

^{2/} Non-SES/SL/ST Award