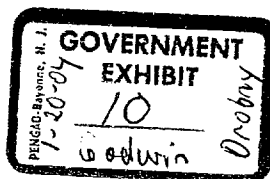


Multiple Organizations in Oracle[®] Applications

Release 11i

March 2002

ORACLE



Multiple Organizations in Oracle® Applications Release 11i

The part number for this book is A81174-02.

Copyright © 1996, 2002, Oracle Corporation. All rights reserved.

Primary Authors: Melanie Heisler, Gail D'Aloisio, Christopher Andrews

Major Contributors: Uma Maheswari, Dylan Wan

Contributors: Craig Brennan, Marcio Soares

The Programs (which include both the software and documentation) contain proprietary information of Oracle Corporation; they are provided under a license agreement containing restrictions on use and disclosure and are also protected by copyright, patent and other intellectual and industrial property laws. Reverse engineering, disassembly or decompilation of the Programs, except to the extent required to obtain interoperability with other independently created software or as specified by law, is prohibited.

The information contained in this document is subject to change without notice. If you find any problems in the documentation, please report them to us in writing. Oracle Corporation does not warrant that this document is error free. Except as may be expressly permitted in your license agreement for these Programs, no part of these Programs may be reproduced or transmitted in any form or by any means, electronic or mechanical, for any purpose, without the express written permission of Oracle Corporation.

If the Programs are delivered to the US Government or anyone licensing or using the Programs on behalf of the US Government, the following notice is applicable:

RESTRICTED RIGHTS LEGEND

Programs delivered subject to the DOD FAR Supplement are 'commercial computer software' and use, duplication and disclosure of the Programs including documentation, shall be subject to the licensing restrictions set forth in the applicable Oracle license agreement. Otherwise, Programs delivered subject to the Federal Acquisition Regulations are 'restricted computer software' and use, duplication and disclosure of the Programs shall be subject to the restrictions in FAR 52.227-19, Commercial Computer Software - Restricted Rights (June, 1987). Oracle Corporation, 500 Oracle Parkway, Redwood City, CA 94065."

The Programs are not intended for use in any nuclear, aviation, mass transit, medical, or other inherently dangerous applications. It shall be licensee's responsibility to take all appropriate fail-safe, back up, redundancy and other measures to ensure the safe use of such applications if the Programs are used for such purposes, and Oracle disclaims liability for any damages caused by such use of the Programs.

Oracle is a registered trademark and ConText, Enabling the Information Age, Oracle7, Oracle8, Oracle8i, Oracle Discoverer, PL/SQL, Pro*C, SQL*Net, and SQL*Plus are trademarks or registered trademarks of Oracle Corporation. Other names may be trademarks of their respective owners.



Contents

	Preface	vii
Chapter 1	Overview	1 – 1
	Overview	1 – 2
	Basic Business Needs	1 – 2
	Major Features	1 – 3
	Multiple Organizations in a Single Installation	1 – 3
	Types of Organizations	1 – 4
	Human Resources Organization Model	1 – 7
	Accounting / Distribution / Materials Management Organization Model	1 – 9
	Controlling Secure Access	1 – 10
	Sell And Ship Products From Different Legal Entities	1 – 11
	Intercompany Accounting	1 – 11
	Report at the Legal Entity or Set of Books Level	1 – 12
	Multiple Organizations in European Implementations	1 – 12
Chapter 2	Multiple Organizations Setup and Implementation	2 – 1
	Setting Up a Multiple Organization Enterprise	2 – 2
	Implementing Multiple Organization Support	2 – 3
	Information Shared Across Organizations	2 – 14
	Information Specific to Each Operating Unit	2 – 15
	Changing the Organization Structure	2 – 23
	Adding a New Operating Unit	2 – 24

	Multi-Org Setup Validation Report	2 - 25
	Report Parameters	2 - 25
	Report Sections	2 - 25
	Active Responsibilities Only	2 - 25
	Customers with Operating Unit Specific Attributes	2 - 26
	Suppliers with Operating Unit Specific Attributes	2 - 26
	Profile Option Errors and Warnings	2 - 27
Chapter 3	Intercompany Accounting	3 - 1
	Intercompany Invoicing	3 - 2
	Basic Business Needs	3 - 2
	Major Features	3 - 3
	Intercompany Invoicing Accounting Details	3 - 3
	Prerequisites	3 - 6
	User Procedures	3 - 9
	Process Flow for Intercompany Invoicing	3 - 10
	Create Intercompany AR Invoices	3 - 11
	Process Submission	3 - 12
	Process Parameters	3 - 13
	Create Intercompany AP Invoices	3 - 14
	Process Submission	3 - 15
	Process Parameters	3 - 15
	Define Intercompany Relations	3 - 16
	Prerequisites	3 - 16
Chapter 4	Technical Overview	4 - 1
	Multiple Organization Support Technical Overview	4 - 2
	The APPS Schema	4 - 2
	Multiple Organization Tables	4 - 2
	Matching Synonyms in the APPS Schema	4 - 4
	RDBMS Variable	4 - 5
	Database Diagram	4 - 5
	Convert to Multiple Organizations	4 - 7
	Seed Data Replication	4 - 9
	Multiple Organizations Reporting API	4 - 11
	Implementation Steps	4 - 11
	Multiple Organizations Reporting API	4 - 18
	Limitations of Multiple Organization Support	4 - 20
	General Limitations	4 - 20
	Limitations on Multiple Operating Units per Set of Books ..	4 - 24

Chapter 5	Reporting	5-1
	Overview of Multiple Organizations Reporting	5-2
	Running Reports	5-3
	Example	5-3
	Reports	5-8
Appendix A	Navigation Paths	A-1
	Multiple Organization Navigation Paths	A-2
Appendix B	Account Generator	B-1
	Using the Account Generator to Generate the Intercompany COGS Account	B-2
	Decide How to Use the Account Generator	B-2
	The Default Account Generator Process	B-3
	Generate Account Using FlexBuilder Rules Process	B-5
	Customizing the Account Generator	B-5
	Attributes for the Inventory COGS Account Process	B-6

Glossary

Index



Preface

Audience for This Guide

Welcome to Release 11i of Multiple Organizations in Oracle Applications.

This user guide includes the information you need to work with Multiple Organizations in Oracle Applications effectively. It contains detailed information about the following:

- Overview and reference information
- System setup for Multiple Organizations in Oracle Applications
- A description of intercompany accounting in Oracle Applications
- A technical overview of Multiple Organizations in Oracle Applications
- Multiple Organizations Reporting

See Other Information Sources for more information about Oracle Applications product information.

How To Use This Guide

This guide contains the information you need to understand and use Multiple Organizations in Oracle Applications.

This preface explains how this user guide is organized and introduces other sources of information that can help you. This guide contains the following chapters:

- Chapter 1 provides a brief introduction to Multiple Organizations in Oracle Applications.
- Chapter 2 describes how to set up Multiple Organizations in Oracle Applications.
- Chapter 3 describes how intercompany accounting works in a Multiple Organizations installation.
- Chapter 4 provides an overview of the technical architecture of Multiple Organizations in Oracle Applications.
- Chapter 5 provides an overview of Multiple Organizations Reporting.
- The appendices include the following information:
 - Default navigation paths for windows described in this guide

- Instructions for using the Account Generator to generate the intercompany Cost of Goods Sold account

Documentation Accessibility

Our goal is to make Oracle products, services, and supporting documentation accessible, with good usability, to the disabled community. To that end, our documentation includes features that make information available to users of assistive technology. This documentation is available in HTML format, and contains markup to facilitate access by the disabled community. Standards will continue to evolve over time, and Oracle Corporation is actively engaged with other market-leading technology vendors to address technical obstacles so that our documentation can be accessible to all our customers. For additional information, visit the Oracle Accessibility Program Web site at <http://www.oracle.com/accessibility/>.

Accessibility of Code Example in Documentation

JAWS, a Windows screen reader, may not always correctly read the code examples in this document. The conventions for writing code require that closing braces should appear on an otherwise empty line; however, JAWS may not always read a line of text that consists solely of a bracket or brace.

Other Information Sources

You can choose from many sources of information, including online and printed documentation, training, and support services, to increase your knowledge and understanding of Oracle Applications.

If this guide refers you to other Oracle Applications documentation, use only the Release 11i versions of those guides unless we specify otherwise.

Online Documentation

Most Oracle Applications documentation is available online (HTML and PDF). Online Help is translated into over twenty languages.

Electronic Technical Reference Manuals (eTRM) are available through the Metalink Web site provided by Oracle Support Services.

The HTML version of this guide is optimized for onscreen reading and may contain information that was not available when this guide was printed.

Related User Guides

You may want to refer to other user guides when you set up and use Multiple Organizations.

You can read the guides online by choosing Library from the expandable menu on your HTML help window, by reading from the Oracle Applications Document Library CD included in your media pack, or by using a Web browser with a URL that your system administrator provides.

If you require printed guides, you can purchase them from the Oracle store at <http://oraclestore.oracle.com>.

User Guides Related to All Products

Oracle Applications User Guide

This guide explains how to navigate the system, enter data, and query information, and introduces other basic features of the GUI available with this release of Oracle Applications.

You can also access this user guide online by choosing "Getting Started and Using Oracle Applications" from the Oracle Applications help system.

User Guides Related to This Product

User Guides for Other Oracle Financial Applications Products

When you install and use Multiple Organizations in Oracle Applications, you will probably want to refer to the user guides for each of the financial applications you have installed, such as Oracle General Ledger, Oracle Payables, Oracle Receivables, Oracle HRMS, Oracle Assets, and Oracle Projects.

Oracle Applications Flexfields Guide

This manual provides flexfields planning, setup, and reference information for your implementation team, as well as for users responsible for the ongoing maintenance of Oracle Applications product data. This manual also provides information on creating custom reports on flexfields data.

Oracle Alert User Guide

This manual explains how to define periodic and event alerts to monitor the status of your Oracle Applications data.

Installation and System Administration Guides

Oracle Applications Concepts

This guide provides an introduction to the concepts, features, technology stack, architecture, and terminology for Oracle Applications Release 11*i*. It provides a useful first book to read before an installation of Oracle Applications. This guide also introduces the concepts behind, and major issues, for Applications-wide features such as Business Intelligence (BIS), languages and character sets, and self-service applications.

Installing Oracle Applications

This guide provides instructions for managing the installation of Oracle Applications products. In Release 11*i*, much of the installation process is handled using Oracle RapidInstall, which minimizes the time it takes to install Oracle Applications and the Oracle 8*i* Server technology stack by automating many of the required steps. This guide contains instructions for using Oracle RapidInstall and lists the tasks you need to perform to finish your installation. You should use this guide in conjunction with individual product user guides and implementation guides.

Upgrading Oracle Applications

Refer to this guide if you are upgrading your Oracle Applications Release 10.7 or Release 11.0 products to Release 11*i*. This guide describes the upgrade process in general and lists database upgrade and product-specific upgrade tasks. You must be at either Release 10.7 (NCA, SmartClient, or character mode) or Release 11.0 to upgrade to

Release 11i. You cannot upgrade to Release 11i directly from releases prior to 10.7.

Maintaining Oracle Applications

Use this guide to help you run the various AD utilities, such as AutoUpgrade, AutoPatch, AD Administration, AD Controller, Relink, and others. It contains how-to steps, screenshots, and other information that you need to run the AD utilities.

Oracle Applications Product Update Notes

Use this guide as a reference if you are responsible for upgrading an installation of Oracle Applications. It provides a history of the changes to individual Oracle Applications products between Release 11.0 and Release 11i. It includes new features and enhancements and changes made to database objects, profile options, and seed data for this interval.

Oracle Applications System Administrator's Guide

This guide provides planning and reference information for the Oracle Applications System Administrator. It contains information on how to define security, customize menus and online help, and manage processing.

You can order a technical reference guide for any product you have licensed. Technical reference guides are available in paper format only.

Oracle Workflow Guide

This guide explains how to define new workflow business processes as well as customize existing Oracle Applications–embedded workflow processes. You also use this guide to complete the setup steps necessary for any Oracle Applications product that includes workflow–enabled processes.

Oracle Applications Electronic Technical Reference Manuals (eTRM)

These reference guides contain database diagrams and detailed descriptions of database tables, forms, reports, and programs for Oracle Applications. This information helps you convert data from your existing applications, integrate Oracle Applications with non–Oracle applications, and write custom reports for Oracle Applications.

Electronic Technical Reference Manuals (eTRM) are available through the Metalink Web site provided by Oracle Support Services.

Training and Support

Training

We offer a complete set of training courses to help you and your staff master Oracle Applications. We can help you develop a training plan that provides thorough training for both your project team and your end users. We will work with you to organize courses appropriate to your job or area of responsibility.

Training professionals can show you how to plan your training throughout the implementation process so that the right amount of information is delivered to key people when they need it the most. You can attend courses at any one of our many Educational Centers, or you can arrange for our trainers to teach at your facility. We also offer Net classes, where training is delivered over the Internet, and many multimedia-based courses on CD. In addition, we can tailor standard courses or develop custom courses to meet your needs.

Support

From on-site support to central support, our team of experienced professionals provides the help and information you need to keep Multiple Organizations in Oracle Applications working for you. This team includes your Technical Representative, Account Manager, and Oracle's large staff of consultants and support specialists with expertise in your business area, managing an Oracle server, and your hardware and software environment.

Do Not Use Database Tools to Modify Oracle Applications Data

*We STRONGLY RECOMMEND that you never use SQL*Plus, Oracle Data Browser, database triggers, or any other tool to modify Oracle Applications tables, unless we tell you to do so in our guides.*

Oracle provides powerful tools you can use to create, store, change, retrieve, and maintain information in an Oracle database. But if you use Oracle tools such as SQL*Plus to modify Oracle Applications data, you risk destroying the integrity of your data and you lose the ability to audit changes to your data.

Because Oracle Applications tables are interrelated, any change you make using an Oracle Applications form can update many tables at once. But when you modify Oracle Applications data using anything other than Oracle Applications forms, you might change a row in one table without making corresponding changes in related tables. If your tables get out of synchronization with each other, you risk retrieving erroneous information and you risk unpredictable results throughout Oracle Applications.

When you use Oracle Applications forms to modify your data, Oracle Applications automatically checks that your changes are valid. Oracle Applications also keeps track of who changes information. But, if you enter information into database tables using database tools, you may store invalid information. You also lose the ability to track who has changed your information because SQL*Plus and other database tools do not keep a record of changes.

About Oracle

Oracle Corporation develops and markets an integrated line of software products for database management, applications development, decision support and office automation, as well as Oracle Applications. Oracle Applications provides the E-business Suite, a fully integrated suite of more than 70 software modules for financial management, Internet procurement, business intelligence, supply chain management, manufacturing, project systems, human resources and sales and service management.

Oracle products are available for mainframes, minicomputers, personal computers, network computers, and personal digital assistants, enabling organizations to integrate different computers, different operating systems, different networks, and even different database management systems, into a single, unified computing and information resource.

Oracle is the world's leading supplier of software for information management, and the world's second largest software company. Oracle offers its database, tools, and application products, along with related consulting, education and support services, in over 145 countries around the world.

Your Feedback

Thank you for using Multiple Organizations in Oracle Applications and this user guide.

We value your comments and feedback. This guide contains a Reader's Comment Form you can use to explain what you like or dislike about Multiple Organizations or this user guide. Mail your comments to the following address or call us directly at (650) 506-7000.

Oracle Applications Documentation Manager
Oracle Corporation
500 Oracle Parkway
Redwood Shores, CA 94065
U.S.A.

Or, send electronic mail to appsdoc@us.oracle.com.

CHAPTER

1

Overview

This chapter introduces you to the basic concepts of Multiple Organizations in Oracle Applications and describes how to model your complex enterprise with multiple organizations. It includes discussions of:

- Types of organizations
- Controlling access
- Selling, shipping, purchasing, and receiving
- Intercompany accounting
- Reporting at the legal entity or set of books level

Overview

The Oracle Applications organization models define organizations and the relationships among them in arbitrarily complex enterprises. This organization model serves as the cornerstone for all of the Oracle Applications products. It dictates how transactions flow through different organizations and how those organizations interact with each other.

Generally, a complex enterprise has several organization structures, such as Internal, Accounting, and Human Resources. You are able to define different structures to customize Oracle Applications according to your business needs.

Basic Business Needs

Oracle Applications provides you with the features you need to satisfy the following basic business needs:

- Use a single installation of any Oracle Applications product to support any number of organizations, even if those organizations use different sets of books.
- Define different organization models
- Support any number of legal entities within a single installation of Oracle Applications.
- Secure access to data so that users can access only the information that is relevant to them.
- Sell products from a legal entity that uses one set of books and ship them from another legal entity using a different set of books, and automatically record the appropriate intercompany sales by posting intercompany accounts payable and accounts receivable invoices.
- Purchase products through one legal entity and receive them in another legal entity.

Major Features

Multiple Organizations in a Single Installation

You can define multiple organizations and the relationships among them in a single installation of Oracle Applications. These organizations can be sets of books, business groups, legal entities, operating units, or inventory organizations.

Secure Access

You can assign users to particular organizations. This ensures accurate transactions in the correct operating unit.

Sell And Ship Products From Different Legal Entities

You can sell from one legal entity and ship from another, posting to each organization's set of books.

Receive Goods Into Any Inventory Organization

You can enter purchase orders and assign for receipt any inventory organization that uses the same set of books. Your purchase order operating unit and receiving inventory organization must share the same set of books to receive against a purchase order.

Automatic Accounting for Internal Requisitions

You can create an internal requisition (sales order) in one organization, then ship from another organization, with correct intercompany invoicing.

Multiple Organizations Reporting

You can set up your Oracle Applications implementation to allow reporting across operating units by setting up the top reporting level. You can run your reports at the set of books level, legal entity level, or operating unit level

Multiple Organizations in a Single Installation

You can support multiple organizations running any Oracle Applications product with a single installation. When you run any

Oracle Applications product, you first choose an organization—either implicitly by choosing a responsibility, or explicitly in a Choose Organization window. Each window and report then displays information for your organization only.

Organizations that share the same functional currency, Accounting Flexfield structure, and calendar can post to the same set of books.

Types of Organizations

You can define organizations and the relationships among them.

Set of Books

A financial reporting entity that uses a particular chart of accounts, functional currency, and accounting calendar. Oracle General Ledger secures transaction information (such as journal entries and balances) by set of books. When you use Oracle General Ledger, you choose a responsibility that specifies a set of books. You then see information for that set of books only.

Business Group

The business group represents the highest level in the organization structure, such as the consolidated enterprise, a major division, or an operation company. The business group secures human resources information. For example, when you request a list of employees, you see all employees assigned to the business group of which your organization is a part.

Note: This is true in all applications except the HR applications, which support more granular security by a lower-level organization unit, the security profile.

Multiple sets of books can share the same business group if they share the same business group attributes, including HR flexfield structures.

Legal Entity

A legal company for which you prepare fiscal or tax reports. You assign tax identifiers and other legal entity information to this type of organization.

Note: There are currently only a few features provided for legal entities, such as intrastat movement reports and intercompany invoice generation.

Balancing Entity

Represents an accounting entity for which you prepare financial statements. This is a segment in the Accounting Flexfield structure (usually the Company segment) at which all accounting entries must balance. There may be multiple companies within the same structure, and each of these must balance within itself. Each legal entity can have one or more balancing entities. You can use Flexfield Value Security rules to restrict data entry of balancing segment values by legal entity or operating unit.

Operating Unit

An organization that uses Oracle Cash Management, Order Management and Shipping Execution, Oracle Payables, Oracle Purchasing, and Oracle Receivables. It may be a sales office, a division, or a department. An operating unit is associated with a legal entity. Information is secured by operating unit for these applications. Each user sees information only for their operating unit. To run any of these applications, you choose a responsibility associated with an organization classified as an operating unit.

Inventory Organization

An organization for which you track inventory transactions and balances, and/or an organization that manufactures or distributes products. Examples include (but are not limited to) manufacturing plants, warehouses, distribution centers, and sales offices. The following applications secure information by inventory organization: Oracle Inventory, Bills of Material, Engineering, Work in Process, Master Scheduling/MRP, Capacity, and Purchasing receiving functions. To run any of these applications, you must choose an organization that has been classified as an inventory organization.

You create sets of books using the Define Set of Books window in Oracle General Ledger. You define all other types of organizations using the Define Organization window.

HR Organization

HR organizations represent the basic work structure of any enterprise. They usually represent the functional management, or reporting groups that exist within a business group. In addition to these internal organizations, you can define other organizations for tax and government reporting purposes, or for third part payments.

Organizations in Oracle Projects

Oracle Projects allows you to define organization hierarchies to reflect your company's organizations structure. You can add Oracle Projects-specific organization types to the organization hierarchy (for example, projects organizations or Expenditure organizations) to help you to better manage your project control requirements. You assign project and expenditure hierarchies to operating units.

Asset Organizations

An asset organization is an organization that allows you to perform asset-related activities for a specific Oracle Assets corporate depreciation book. Oracle Assets uses only organizations designated as asset organizations

See Also

Define Set of Books (*Oracle General Ledger User Guide*)

Define Organizations (*Implementing Oracle HRMS*)

Define Organization (*Oracle Inventory User's Guide*)

Employees and Organizations (*Oracle Projects User Guide*)

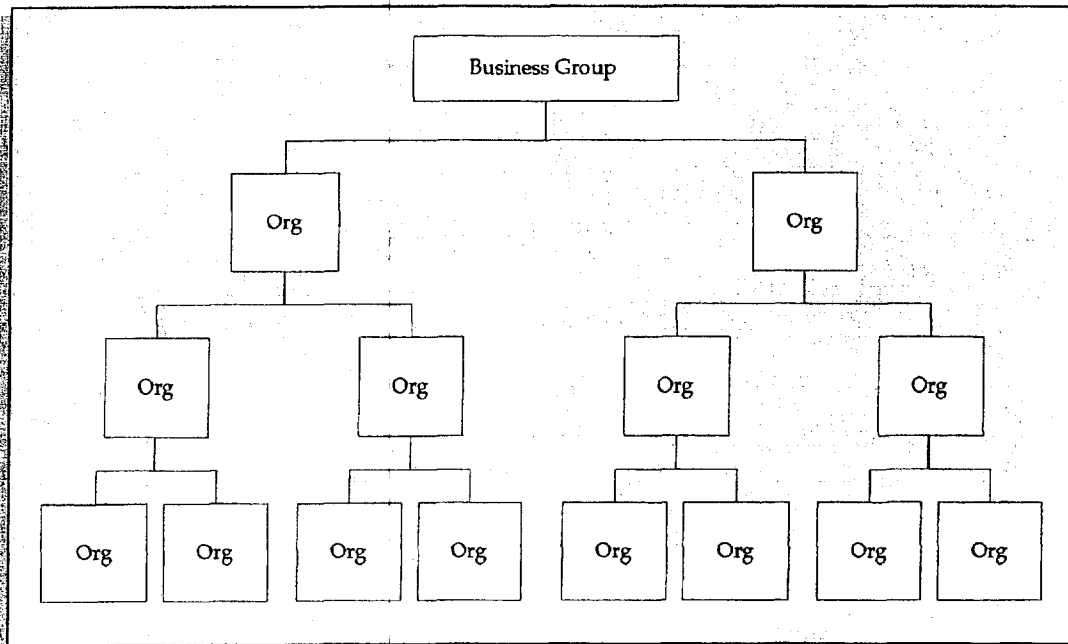
Asset Organizations (*Oracle Assets User Guide*)

Human Resources Organization Model

With Oracle Human Resources, you can define multilevel organization hierarchies, with a business group at the top of each hierarchy. When you define new organizations, they are automatically assigned to the business group associated with your current session. Each organization is part of a business group. The business group is usually the top box on an enterprise organization chart, as in Figure 1 - 1.

Figure 1 - 1

Enterprise Organization Chart Example



The business group is the largest organization unit you set up in Human Resources to represent your enterprises as an employer.

After defining one or more business groups for your enterprise, you set up one or more government reporting entities (GREs) within each business group. The GRE is the organization that federal, state, and local governments recognize as the employer.

Below this level, you represent the groupings in which employees work, such as branches, departments, or sections, by means of internal

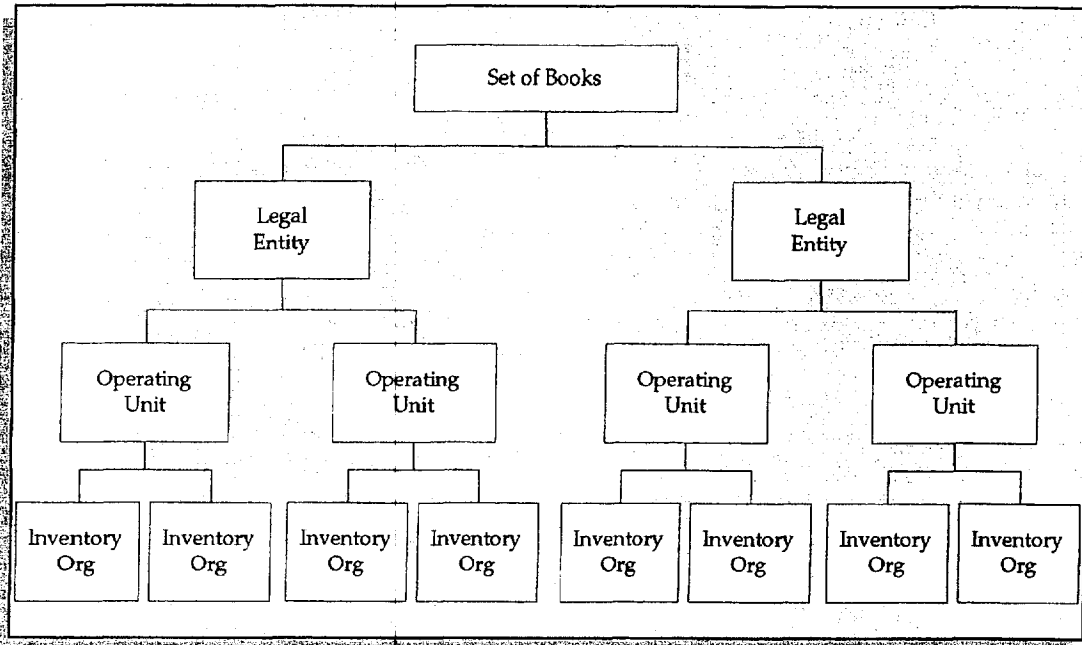
organizations. To enable the assignment of employees to an internal organization, you classify the internal organization as an HR organization.

You can define external organizations in the same way as internal organizations, so that you can represent organizations that are not part of your enterprise (such as training vendors or tax offices). The major difference between internal and external organizations is that you cannot assign people to an external organization.

Accounting / Distribution / Materials Management Organization Model

Using the accounting, distribution, and materials management functions in Oracle Applications, you define the relationships among inventory organizations, operating units, legal entities, and sets of books to create a multilevel company structure, as shown in Figure 1 - 2.

Figure 1 - 2 Multilevel Company Structure Example



Legal Entities Post to a Set of Books

Each organization classified as a legal entity identifies a set of books to post accounting transactions.

Operating Units Are Part of a Legal Entity

Each organization classified as an operating unit is associated with a legal entity.

Inventory Organizations are Part of an Operating Unit

Each organization classified as an inventory organization references an operating unit.

Inventory Organization Determines Items Available to Order Management

The Item Validation Organization parameter specifies which Oracle Manufacturing organization is used to validate inventory items. You must define all transactable items in this organization. Some inventory item attributes for Receivables and Order Management, including Tax Code and Sales Account, are specific to an operating unit or an accounting flexfield structure. Therefore, you should define an item validation organization for each operating unit.

See: Enabling Parameters (*Oracle Order Management User's Guide*)

Inventory Organization Determines Items Available to Purchasing

The inventory organization you specify in the financial options for each operating unit determines the items available in Purchasing. You can only choose an inventory organization that uses the same set of books as your operating unit.

See: Define Organization (*Oracle Inventory User's Guide*)

Controlling Secure Access

Data Security

You can limit users to information relevant to their organization. For example, you can limit access for order administration clerks to sales orders associated exclusively with their sales office.

Inventory Organization Security by Responsibility

You can specify which inventory organizations are available to users in each responsibility. The Choose Inventory Organization window automatically limits available inventory organizations to those authorized for the current responsibility.

See: *Oracle Inventory User's Guide*

Responsibility Determines Operating Unit

Your responsibility determines which operating unit you access when you use Oracle Applications. When you use Oracle Payables, Receivables, Order Management and Shipping Execution, Purchasing, Projects, and Sales Compensation you see information that is relevant to your operating unit. All transactions you create are automatically assigned to your operating unit.

See: Define Responsibility (*Oracle Applications System Administrator's Guide*)

Sell And Ship Products From Different Legal Entities

Sell from One Legal Entity, Ship from Another Legal Entity

When you enter sales orders, you can choose any inventory organization as the shipping warehouse. The shipping warehouse may be in a different legal entity than the operating unit that enters the sales order, and it may post to a different set of books.

Use the Choose Organization Window to Choose Inventory Organization

After you choose your responsibility to perform materials management functions using Oracle Inventory, Work in Process, Bills of Materials, Master Scheduling/MRP, Capacity, or Purchasing, you must use the Choose Organization window to pick an inventory organization.

See: Define Intercompany Relations: page 3 – 16

Intercompany Accounting

Automatic Intercompany Sales Recognition

Sales orders created and shipped from one legal entity to a different legal entity automatically generate an intercompany invoice to record a sale between the two organizations.

See: Define Intercompany Relations: page 3 – 16

Posting Intercompany Invoices to Different Accounts

You can define different accounts for Trade and Intercompany Cost of Goods Sold and Sales Revenue to eliminate intercompany profit.

See: Intercompany Invoicing Accounting Details: page 3 – 3

Report at the Legal Entity or Set of Books Level

In addition to reporting at the operating unit level, you can report at the legal entity or set of books level.

See: Multiple Organizations Reporting: page 5 – 2

Multiple Organizations in European Implementations

There are some limitations for the Multiple Organizations feature which may affect European implementations. These are described in the Technical Overview chapter of this manual.

See: Limitations on Multiple Operating Units per Set of Books: page 4 – 24

For more detailed information about complying with country-specific statutory requirements and common business practices when using Oracle Financials, please refer to the User Guide for your country or region.

CHAPTER

2

Multiple Organizations Setup and Implementation

This chapter tells you everything you need to know about setting up multiple organizations, including:

- Developing the organization structure
- Defining organizations and their relationships
- Implementing Applications products
- Adding a new operating unit
- Using the Multiple Organizations Validation Report

Setting Up a Multiple Organization Enterprise

This essay describes how to implement your organizational structure within the Oracle Applications Multiple Organization model. Before beginning this implementation, be sure you are familiar with the terminology Oracle uses for its business organization model.

See: Overview: page 1 – 2

These are the steps to follow when implementing the Multiple Organization support feature in Oracle Applications. Perform these steps when you are converting from a non-Multiple Organization setup to a Multiple Organization setup. If you need to add a new operating unit to an existing Multiple Organization setup, see: Adding a New Operating Unit: page 2 – 24.

1. Develop the Organization Structure
2. Define Sets of Books
3. Define Locations
4. Define Business Groups (optional)
5. Associate Responsibilities with Business Groups
6. Define Organizations
7. Define Organization Relationships
8. Define Responsibilities
9. Set MO: Operating Unit Profile Option
10. Convert to Multiple Organization Architecture
11. Change Order Management Profile Option
12. Set Profile Options Specific to Operating Units
13. Define Inventory Organization Security (optional)
14. Implement the Applications Products
15. Secure Balancing Segment Values by Legal Entity (optional)
16. Run the Multi-Org Setup Validation Report (recommended)
17. Implement Document Sequencing (optional)
18. Define Intercompany Relations (optional)
19. Set Top Reporting Level Profile Option (optional)
20. Set Conflict Domains (optional)

Implementing Multiple Organization Support

This section uses a sample hierarchy to describe how to implement Oracle Applications Multiple Organization support.

Step 1 Develop the Organization Structure

A successful implementation of Multiple Organization support in Oracle Applications depends primarily on defining your organizational structure in the multi-level hierarchy used by Oracle Applications. The levels are:

- Business groups
- Accounting sets of books
- Legal entities
- Operating units
- Inventory organizations

Example 1 illustrates the organization structure.

See Also

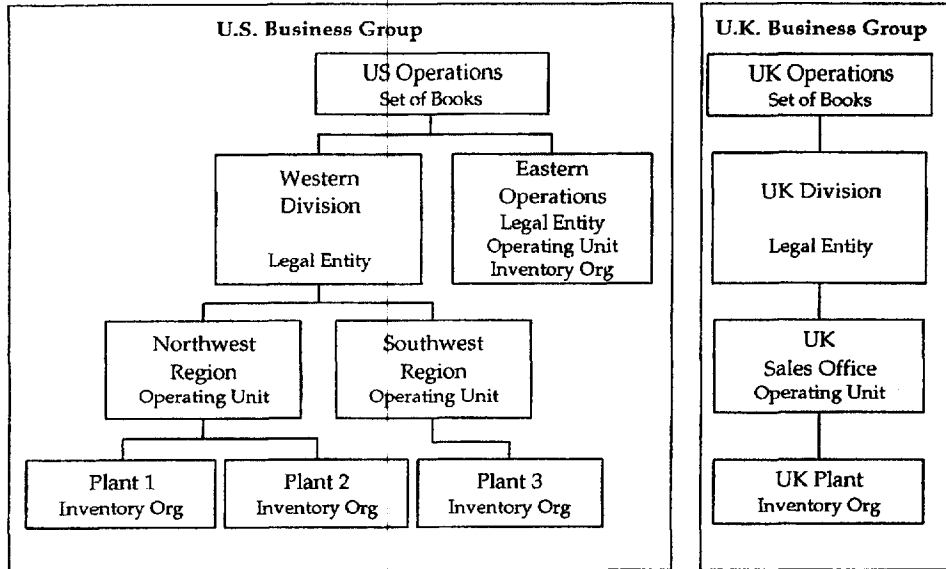
Overview: page 1 – 2

Creating Organization Hierarchies (*Using Oracle HRMS –The Fundamentals*)

Deciding on the Organization Structure

First, you need to decide on the organizations you will use in your multiple organization implementation. The figure below shows a corporation with two business groups, three legal entities, four operating units, and five inventory organizations. This example organization structure is used throughout most of this chapter.

Organization Structure Example



The business groups are U.S. and U.K. The U.S. business group consists of two legal entities — Western Division and Eastern Operations. These legal entities are assigned to the same set of books (US Operations) because they share the same functional currency, accounting flexfield structure, and calendar. The U.K. legal entity — UK Division — is assigned to a separate set of books (UK Operations) because its functional currency is different from that of the U.S. legal entities.

The US Western Division legal entity consists of two operating units — Northwest Region and Southwest Region. The Northwest Region consists of two inventory organizations — Plant1 and Plant2. The Southwest Region has one inventory organization, named Plant 3. The US Eastern Operations legal entity is also an operating unit and inventory organization.

The UK Division legal entity has one operating unit, named UK Sales Office. The operating unit has one inventory organization, named UK Plant.

Step 2 Define Sets of Books

Use the Define Set of Books window to enter your sets of books.

Note: If your enterprise structure requires that you define a business group, you should define sets of books before business groups.

The table below explains what the set of books parameters are for our example hierarchy.

Set of Books Name	SOB Short Name	Functional Currency	Accounting Flexfield Structure	Calendar
U.S. Operations	US_Op	USD	Standard	Standard
U.K. Operations	UK_Op	GBP	Standard	Standard

Table 2 – 1 Examples of sets of books (Page 1 of 1)

See: Define Set of Books (*Oracle General Ledger User Guide*)

Step 3 Define Locations

Use the Define Location window to define names and addresses for the locations you use within your enterprise. You define each location once only. This saves you time if you have multiple organizations with the same location. You should define locations for your legal entities and inventory organizations. Oracle Applications products use locations for requisitions, receiving, shipping, billing, and employee assignments.

Step 4 Define Business Groups (optional)

Note: This section applies to you if you have more than one business group, or if you do not choose to use the pre-defined business group provided by Oracle Applications.

Oracle Applications secures human resources information, including organization definition, by business group.

You must have at least one business group. For a fresh installation, Oracle Applications provides a pre-defined business group, Setup Business Group. You can define additional business groups as required for your enterprise. We recommend that you modify the pre-defined business group rather than defining a new one. If you define a new business group instead of modifying the pre-defined business group, you need to set the Business Group profile option at the responsibility

level for the new business group. Oracle Human Resources automatically creates a security profile with the business group name when you define a new business group.

You should define all your business groups before defining any other type of organization.

Note: If you plan to implement HRMS, you should consider its organization requirements when defining the organization structure. When considering multiple business groups, employee data will have to be entered and maintained for every business group using responsibilities linked to each business group. Consult your HR specialist for more information on HR organization considerations.

► **To define additional business groups:**

1. Set the responsibility from which you define the organizations in the profile option HR: User Type to HR User, to get access to the Define Organizations window. This profile must be set for all responsibilities that use tables from Oracle Human Resources (for example, responsibilities used to define employees and organizations).
2. Define all of your business groups at this step from a responsibility. Do not define any new organizations or organization hierarchies until you have associated each business group with a responsibility. You do this by setting the HR: Security Profile profile option for each responsibility.

See: Profile Options (*Customizing, Reporting, and System Administration in Oracle HRMS*)

3. After you have correctly associated your business groups with a responsibility, sign off and sign on again using the correct responsibility for the business group you want to define. For example, if you have a U.S. business group and a U.K. business group, select the responsibility attached to the U.S. business group to define the U.S. organization structure.

Note: Oracle Human Resources automatically creates a view all security profile with the business group name. This enables you to view all records for your business group.

Note: Oracle Human Resources allows you to use a single responsibility security model by enabling the Security Group. This allows you to access more than one business group from a responsibility. You should not use the single responsibility model in Multiple Organization products.

See: *Customizing, Reporting, and System Administration in Oracle HRMS*

Step 5 Associate Responsibilities with Business Groups (optional)

Note: This section applies to you if you have multiple business groups, or if you do not choose to use the default business group provided by Oracle Applications.

If you have multiple business groups, you must associate each responsibility to one and only one business group. You associate a business group with a responsibility via the HR:Business Group system profile option. If you are upgrading to Multiple Organizations, you must also associate previously created responsibilities to the appropriate business group.

Step 6 Define Organizations

Use the Define Organization window to define all your organizations. You can perform this step and the next step (Define Organization Relationships) at the same time. The steps are presented separately to emphasize the difference between the organizational entity and the role it plays in your organizational structure.

► **To define legal entities, operating units, and inventory organizations:**

1. Log in to the responsibility associated with the business group for which you are defining an organization.
2. Define a legal entity. It is then automatically attached to the correct business group.
3. Define operating units.
4. Define your inventory organizations for each operating unit that will have an inventory organization.

Note: Do not define the inventory parameters at this point.

5. If you have more than one business group, switch to the responsibility associated with the other business group and continue to define your organization structure.

The following table summarizes information about the different organizations for our example hierarchy.

Organization Name	Legal Entity?	Oper. Unit	Inv. Org?
Western Division	Yes		
Eastern Operations	Yes	Yes	Yes
U.K. Division	Yes		
Northwest Region		Yes	
Southwest Region		Yes	
U.K. Sales Office		Yes	
Plant 1			Yes
Plant 2			Yes
Plant 3			Yes
U.K. Plant			Yes

Table 2 - 2 Organizations (Page 1 of 1)

See: Define Organization (*Oracle Inventory User's Guide*)

Step 7 Define Organization Relationships

Use the Define Organization window to define organization relationships by assigning classifications to each organization. Attributes of certain classifications relate organizations and the roles they play. You can classify an organization as any combination of legal entity, operating unit, and inventory organization. Specify your organization classifications in the following order:

1. Legal Entities

Attach organizations designated as legal entities to a set of books. You must also specify a location in the Define Organization window. Use the Define Location window to define locations for your legal entities.

2. Operating units

Attach the operating units to the correct set of books and legal entity.

3. Inventory organizations

Attach the inventory organizations to the correct operating unit, legal entity, and set of books.

If you have more than one business group, change to the responsibility associated with the other business group and continue defining your organization classification.

Table 2 – 3 shows the information you must enter for each organization classification.

Classification	Information Type	Required Attributes
Business Group	Business group information if Human Resources is installed. Otherwise, None.	Short Name, Employee/Applicant Numbering, Key Flexfield Structures, Default Legislation Code, and Currency
GRE/Legal Entity	Legal Entity Accounting	Set of Books, Location
Operating Unit	Operating Unit Information	Legal Entity, Set of Books
Inventory Organization	Accounting Information	Set of Books, Legal Entity, Operating Unit

Table 2 - 3 Required information for organization classifications (Page 1 of 1)

Special Considerations for Inventory Organizations

All the inventory organizations in the above chart have been set up with the minimal amount of information to enable them in the Multiple Organization environment. This minimal amount is detailed in the table below.

If you plan to implement Oracle Inventory, you need to follow the setup procedures for that product.

See: *Oracle Inventory User's Guide*

For a standalone Oracle Purchasing installation (without Oracle Inventory), you must specify the minimum information shown in the following table:

Sequence	Additional Organization Information	Required Information
1	Accounting information	Set of books, legal entity, operating unit
2	Receiving information	Three-character organization code, prefix serial (no dummy)
3	Inventory information	All required accounts

Table 2 - 4 (Page 1 of 1)

Location: You must specify a location for an organization classified as an inventory organization. You can assign any locations that is not assigned to a different inventory organization, or you can assign a location that is linked to the current inventory organization.

Receiving Information: When you select the Receiving Information type, you navigate to the Receiving Options window. Use the Receiving Options window to define options that govern receipts in your system. You cannot receive items into an inventory organization until you specify receiving options for the organization.

Inventory Information: When you select the Inventory Information type, you navigate to the Organization Parameter window. You must define the control options and account defaults for one inventory organization, the item master organization. Then you can easily assign items to other inventory organization without recreating all the item information. Use the Organization Parameter window to assign inventory organizations to the item master. The item master organization uses itself as the item master.

There is no functional or technical difference between the item master organization and other inventory organizations. However, we recommend that you limit the item master to just an item definition organization. If you set up new inventory organizations in the future, you can assign the new items to only the item master and the new inventory organization.

Note: You can navigate to the Receiving Options window and Organization Parameter window from the Define Organization window if you use one of the following pre-defined responsibilities: Purchasing Super User, Inventory, Inventory Item, Project Billing User, Project Costing Super User, Sales and Marketing Super User, and Territory Administrator.

Step 8 Define Responsibilities

Use the Define Responsibility window to define responsibilities for each operating unit by application. When you sign on to Oracle Applications, the responsibility you choose determines the data, forms, menus, reports, and concurrent programs you can access.

You should consider using naming conventions for the responsibility names in a Multiple Organization environment. It is a good idea to use abbreviations of the business function and the organization name to uniquely identify the purpose of the responsibility, for example, Payables Manager Northwest or Western Receivables Super User.

See: Define Responsibility (*Oracle Applications System Administrator's Guide*)

Step 9 Set MO: Operating Unit Profile Option

Oracle Applications uses the profile option MO: Operating Unit to link an operating unit to a responsibility. You must set this profile option for each responsibility.

When you connect to the Oracle Applications, you sign on by entering your username and password. Then, you choose a responsibility that is available to your user. After you choose your responsibility, there is an initialization routine that reads the values for all profile options assigned to that responsibility, including the value for MO: Operating Unit. Oracle Applications allows you to see only the information for that particular operating unit that is assigned to your responsibility.

You must also define the default operating unit by setting the MO: Operating Unit profile option at the site level. If this is a fresh installation, the default operating unit can be any operating unit you have defined. If this is an existing installation, you should assign as the default operating unit the operating unit to which all existing data should belong.

If you use Oracle General Ledger with automatic tax calculation enabled in a Multiple Organization environment, you must set the MO: Operating Unit profile option. Since General Ledger shares input and output tax codes with Oracle Payables and Oracle Receivables, you can use only tax codes that belong to your current responsibility's corresponding operating unit.

However, General Ledger's Account Inquiry window ignores the operating unit profile setting. This allows you to drill down to your subledger details, regardless of which operating unit originated the transaction.

If you use Oracle Training Administration (OTA) in a Multiple Organization environment, you must set the MO: Operating Unit profile option. This ensures that the OTA customer and supplier function works correctly in a Multiple Organization environment.

Step 10 Convert to Multiple Organization Architecture

Ask your database administrator to run the Ad Administration utility (adadmin). One of the options in adadmin is to convert to Multiple Organization architecture. Choosing this option will enable the Multiple Organization Support feature as well as add operating unit context to all existing data. This process will also replicate seed data to all operating units that have been defined.

Before running this step, you must define an operating unit and set the site-level AQL profile option MO: Operating Unit to use your new operating unit. This profile option tells adadmin what operating unit it should use when converting your existing data. If you define additional operating units, the seed data will be replicated for all operating units.

The Convert to Multiple Organization Architecture option does not display on the menu if you already have Multiple Organizations installed in your database. You no longer need to run the Convert to Multiple Organizations Architecture option again since the Multiple Organizations architecture is built into the underlying applications.

See: *Maintaining Oracle Applications Manual*

Step 11 Verify Order Management System Parameter Settings

If you have different item validation organizations for each operating unit, verify the correct setting for each operating unit in the Order Management system parameter window.

See: *Enabling Parameters (Oracle Order Management User's Guide)*

Step 12 Set Profile Options Specific to Operating Units

Some profile options, including AR: Receipt Batch Source and AR: Transaction Batch Source, reference data that is secured by operating unit. You must set these profile options at the responsibility level. You should choose a value corresponding to the operating unit of the responsibility.

The following profile options need to be set for each responsibility for each operating unit where applicable:

- HR: Business Group (all responsibilities)
- HR: User Type

The HR: User Type profile option limits field access on windows shared between Oracle Human Resources and other applications. If you do not use Oracle Payroll, it must be to HR User for all responsibilities that use tables from Oracle Human Resources (for example, responsibilities used to define employees and organizations).

- GL: Set of Books Name

Oracle General Ledger forms use the GL:Set of Books profile option to determine your current set of books. If you have different sets of books for your operating units, you should set the GL:Set of Books profile option for each responsibility that uses Oracle General Ledger forms.

- INV: Intercompany Currency Conversion
- Tax: Allow Override of Tax Code
- Tax: Invoice Freight as Revenue
- Tax: Inventory Item for Freight
- Sequential Numbering

Step 13 Define Inventory Organization Security (optional)

With inventory organization security you can restrict inventory organization access to specific responsibilities. You may want to restrict your manufacturing users to certain organizations according to your organizational hierarchy. This feature has the following characteristics:

- Until you assign an organization to a responsibility in this window, all responsibilities have access to all organizations. Once you have restricted any responsibilities to certain organizations, you must then explicitly define the organizations that all responsibilities can access.
- This feature does not restrict access once the user is in the product. Users with access to functions that cross multiple organizations (such as ATP, Inter-Organization Transfers, Item Search, Multi-Org Quantity Report, and so forth) can still specify any valid organization when running these functions.

Step 14 Implement the Applications Products

After the steps above are complete, go into each operating unit and set up the Oracle Applications products. The following products must be set up for each operating unit in which you intend to perform the functions:

- Oracle Cash Management
- Oracle Order Management and Shipping Execution
- Oracle Payables
- Oracle Projects
- Oracle Purchasing
- Oracle Property Manager
- Oracle Receivables
- Oracle Release Accounting
- Oracle Sales Compensation
- Oracle Sales and Marketing
- Oracle Service
- European Localizations
- Latin America Localizations
- Regional Localizations

Oracle Assets, Oracle General Ledger, Oracle Inventory, and the rest of the Oracle Manufacturing products need to be set up only once for the installation, not once for each operating unit. To perform these setup procedures, follow the instructions in the product user guides.

Information Shared Across Organizations

The following information is global, meaning it needs to be set up only once for the enterprise:

- Flexfield definitions
- Customer Header (customer site is at the operating unit level)
- Supplier Header (supplier site is at the operating unit level)
- All other information that is not listed below

Information Specific to Each Operating Unit

The following setup data is stripped, meaning it must be set up for each operating unit:

Cash Management

- System parameters
- Bank accounts
- Bank transaction codes
- Bank Statement open interface
- Reconciliation open interface
- Forecasting open interface
- Cash forecasting templates

Order Management

- Hold sources
- Order types
- Holds

Payables

- Supplier sites
- Matching tolerances
- Distribution sets
- Bank accounts
- Tax names and groups
- Reporting entities
- Financial options
- Expense report templates
- System options

Projects

- Implementation options
- Expenditure types
- Non-labor resources

- Usage cost rate overrides
- Expenditure type cost rates
- Employee rates
- Burden schedules
- Bill rate schedules
- Resource list
- Project types
- Project templates
- AutoAccounting

Purchasing

- Supplier sites
- Financial options
- Control rules/groups
- Purchasing options
- Job/position controls
- Freight carriers
- Document controls

Receivables

- AutoAccounting
- Contact phones
- Customer address
- Customer relationships
- Customer bank accounts
- Customer call information (call records, topics)
- Distribution sets
- Transaction sources
- Lockbox definitions
- Memo lines
- Receipt sources
- Receivables activities

- Remit to address
- Remittance bank accounts
- Salesperson, sales territories assigned to salespersons
- System options
- Tax exemptions and exceptions
- Tax codes
- Tax rates
- Tax names and groups
- Transaction types
- VAT taxes

Sales and Marketing

- Territories
- Territory types
- Territory groups
- Territory qualifiers
- Territory Accesses
- Interest types
- Interest codes
- Interest category sets
- Promotion word processors
- Collateral categories
- Sales stages

Services

- Service parameters
- Access control templates

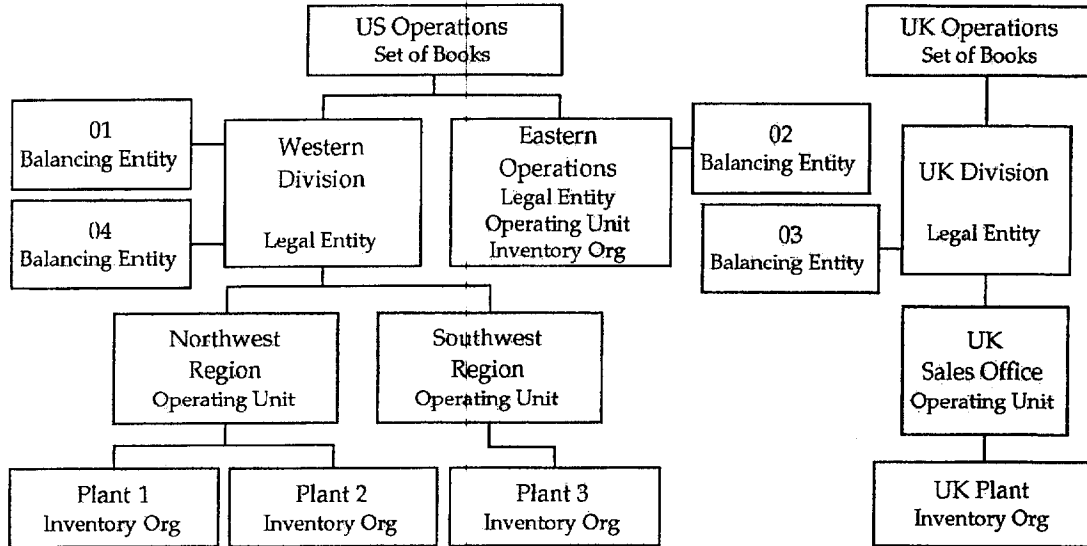
For more information, see the Setup chapter for your product.

Step 15 Secure Balancing Segment Values by Legal Entity (optional)

Use the Define Security Rule window to create rules that secure data entry of balancing segment values for each legal entity. Each security

rule is composed of one or more security rule elements that specify a range of values to include or exclude.

Organization Structure with Balancing Entities Example



The following table summarizes the information needed to define security rules for the Division value set of our example hierarchy.

Value Set	Security Rule	Type Element	Low Element	High Element
Division	US Western	Include	01	01
Division	US Western	Include	04	04
Division	US Eastern	Include	02	02
Division	UK	Include	03	03

Table 2 - 5 Security Rules for the Division Value Set (Page 1 of 1)

Use the Assign Security Rules window to assign the same rule(s) to all responsibilities associated with the legal entity's operating units. The following table lists the responsibilities, value sets, and security rules for our example hierarchy.

Responsibilities	Value Set	Security Rule
All responsibilities for Northwest Region and Southwest Region operating units	Division	U.S. Western
All responsibilities for Eastern Operations operating unit	Division	U.S. Eastern
All responsibilities for UK Sales Office operating unit	Division	U.K.

Table 2 – 6 Security Rules Assigned to Operating Units (Page 1 of 1)

If you need to further secure balancing segment values for each operating unit of a legal entity, you can define additional rules and assign them to all responsibilities associated with the relevant operating units. If, for example, you need to restrict the Northwest Region operating unit to balancing segment value 01 and the Southwest Region to balancing segment value 04, you can add the rules described in the following table.

Value Set	Security Rule	Type Element	Low Element	High Element
Division	Northwest	Include	01	01
Division	Southwest	Include	04	04

Table 2 – 7 Security Rules for Operating Units (Page 1 of 1)

In addition to the previous rule assignments, you can assign the new rules to all responsibilities associated with the two operating units, as illustrated in the table below. When you assign multiple rules to the same responsibility, only the overlapping values of the rules are available to users of the responsibility.

Responsibilities	Value Set	Security Rule
All responsibilities for Northwest Region operating unit	Division	Northwest
All responsibilities for Southwest Region operating unit	Division	Southwest

Table 2 – 8 Security Rules Assigned to Operating Units (Page 1 of 1)

Step 16 Run the Multi-Org Setup Validation Report (recommended)

After you have implemented Multiple Organizations, run the Setup Validation Report to identify any setup problems. Some of the errors that the report finds may be deleted optionally by running this report, while others require that you change your setup. All suggested changes can be confirmed optionally so that you may retain your implementation even if it fails validation.

See: Multi-Org Setup Validation Report: page 2 – 25

Step 17 Implement Document Sequencing (Optional)

After you have implemented Multiple Organizations and run the Multi-Org Setup Validation Report, you have the option to set up document sequencing (a common requirement for European countries) for each application that supports document sequencing. Sequence assignments are controlled at the set of books level.

See: Document Sequences (*Oracle Applications System Administrator's Guide*)

Step 18 Define Intercompany Relations (Optional)

This step is only necessary when using the Multiple Organization Intercompany Invoicing functionality. Intercompany relations need to be defined for each Selling/Shipping relationship in your organization. Defining these relationships will allow for the production of automatic intercompany invoices. To enable this the following steps must be completed:

- Define Customers
- Define Suppliers
- Define Transaction Type
- Define Intercompany Relations
- Define Oracle Receivables System Options
- Define Oracle Receivables Invoice Batch Source
- Define Oracle Receivables Invoice Profile Options
- Define Oracle Payables Invoice Profile Options
- Use the Account Generator to generate the Cost of Goods Sold account

See Also

Intercompany Invoicing: page 3 – 2

Using the Account Generator to Generate Intercompany COGS
Accounts: page B – 2

Step 19 Set Top Reporting Level Profile Option (optional)

You need to define your reporting levels by setting the MO: Top Reporting Level profile option. To do this, you set your top reporting level to one of the following:

- Set of Books
- Legal Entity
- Operating Unit

You will be able to report on anything that is within the reporting level. The default value is Operating Unit.

See: Multiple Organization Reporting: page 5 – 2

Step 20 Set Up Conflict Domains (optional)

A conflict domain is an abstract representation of the groupings used to partition your data. When a program is listed as incompatible with another, the two programs cannot run simultaneously in the same conflict domain. Two incompatible concurrent programs may run simultaneously if they are submitted in different conflict domains. To maximize the concurrency in a multiple organization environment, you can set up conflict domains for your operating units.

All programs are assigned a conflict domain when they are submitted. The following determines the conflict domain you use when you submit a concurrent request:

- The value of the concurrent program parameter which is defined as Conflict Domain parameter
- The value of the Concurrent: Conflicts Domain profile option

If you do not define any conflict domain, the Standard conflict domain is used.

► To define a profile option conflict domain:

1. Define Concurrent Conflict Domains

Any alphanumeric string can be used as a Conflicts Domain name. You can use an operating unit name, a legal entity name, or a set of books name as the domain name. You are allowed to define as many as domains as you need. Since you cannot delete conflicts domains, you should keep the domains to a necessary minimum.

2. Set the Concurrent: Conflicts Domain profile option

The profile can be set at Site, Application, Responsibility and User levels.

► **To define a concurrent program parameter as the conflicts domain parameter:**

1. Navigate to the Concurrent Program window. Query up the program you want to define conflict domain.
2. Click on the Parameters. Use the Concurrent Program Parameter window to define the conflict domain parameter. You can choose one of the concurrent program parameters as the conflict domain parameter.

See: *Oracle Applications System Administrator's Guide*

Changing the Organization Structure

At some point, your company may need to make organization changes. Companies usually make organization changes to better adapt themselves to the new business needs and challenges of the market.

One type of organization change you can make is to discontinue one organization. You can use the Define Organizations window to discontinue one organization by putting an end date in its definition.

You can perform other organization changes by enabling or disabling organization classifications, or changing the classification attributes. When you do that, you must consider the following:

- The Define Organizations window does not re-validate the relationships among legal entities, operating units, and inventory organizations.
- You should not try to move one set of books or legal entity to another because your data may not be valid for the new set of books or legal entity. Instead, you should disable the old organization and create a new one for the appropriate set of books or legal entity. The new organization will contain your new data, and the disabled organization will act as an old or history entity that stores past transactions.
- If you create a new organization, you can still access your historical transactions by logging to the responsibility tied to the disabled organization. To enter new transactions, you must log into the responsibility tied to the new organization. The data for each of the two organizations are kept separate from one another, and must be accessed separately.

Adding a New Operating Unit

The following steps are required to add new operating units to your organizational structure:

1. Revise the Organization Structure. See: Develop the Organization Structure: page 2 – 3.
2. Define Sets of Books (optional). See: Define Sets of Books: page 2 – 5.
3. Define Locations. See: Define Locations: page 2 – 5.
4. Define Organizations. See: Define Organizations: page 2 – 7.
5. Define Relationships. See: Define Organization Relationships: page 2 – 8.
6. Define Responsibilities. See: Define Responsibilities: page 2 – 11.
7. Set Profile Options for Each Responsibility linked to the new Operating Unit. See: Set MO: Operating Unit Profile Option: page 2 – 11.
8. Run the Replicate Seed Data concurrent program. See: Seed Data Replication: page 4 – 9.
9. Set profile options specific to operating units. See: Set Profile Options Specific to Operating Units: page 2 – 12.
10. Define Inventory Organization Security (optional). See: Define Inventory Organization Security: page 2 – 13.
11. Implement the Application Products. See: Implement the Application Products: page 2 – 14.
12. Secure Balancing Segment Values (optional). See: Secure Balancing Segment Values by Legal Entity: page 2 – 17.
13. Run the Setup Validation Report (recommended). See: Run the Multi-Org Setup Validation Report: page 2 – 20.
14. Implement Document Sequencing (optional). See: Implement Document Sequencing: page 2 – 20.
15. Define Intercompany Relations (optional). See: Define Intercompany Relations: page 2 – 20.
16. Set the top reporting level (optional). See: :Set Top Reporting Level Profile Option: page 2 – 21.
17. Set up conflict domains (optional). See: :Set Up Conflict Domains page 2 – 21.

Multi-Org Setup Validation Report

Use the Multi-Org Setup Validation Report to identify problems in your Multiple Organization setup. If you detect setup problems, you can use the report to help you correct them.

To submit the Multi-Org Setup Validation Report, use the Submit Request window in the System Administrator responsibility.

Report Parameters

You must enter a value for each of the following parameters:

Active Responsibility Only: Enter Yes or No to indicate whether you want to validate only the active responsibilities on the report. The default value is Yes.

Correct Customer Attributes: Enter Yes or No to indicate whether you want to correct the customer attributes. If you choose Yes, the report deletes the operating unit-specific data from the Customer records. The default value is No.

Correct Supplier Attributes: Enter Yes or No to indicate whether you want to correct the supplier attributes. If you choose Yes, the report deletes the operating unit-specific data from the supplier records. The default value is no.

Report Sections

The report consists of the following sections:

- Active Responsibilities
- Customers with Operating Unit Specific Attributes
- Suppliers with Operating Unit Specific Attributes
- Profile Option Errors and Warnings

Active Responsibilities Only

The report prints the value of the Active Responsibility Only parameter you specified in the first page of the report.

Customers with Operating Unit Specific Attributes

This section of the report indicates that you have data defined at the customer level that is allowed only at the customer site level. This generally occurs when you convert to Multiple Organization support from a non-Multiple Organization implementation. The report indicates if any data has been entered at the customer level in the following fields by printing an asterisk (*) in the column for a particular customer:

- Salesperson (report data appears under the Primary Salesrep column)
- Order Type
- Dunning Site
- Statement Site
- Tax Code
- Carrier (report data appears under the Ship Via column)

The report warns you that this data exists in the database. If you choose Yes for the Correct Customer Attributes report parameter, the report deletes the operating unit-specific data from the customer records.

Suppliers with Operating Unit Specific Attributes

This section of the report indicates that you have data defined at the supplier level that is allowed only at the supplier site level. This generally occurs when you convert to Multiple Organization support from a non-Multiple Organization implementation. The report indicates if any data has been entered at the supplier level in the following fields by printing an asterisk (*) in the column for a particular supplier:

- Liability Account
- Prepayment Account
- Distribution Set
- Statement Site
- Invoice Tax Name
- Offset Tax Name

The report warns you that this data exists in the database. If you choose Yes for the Correct Supplier Attributes report parameter, the

report deletes the operating unit specific data from the customer records.

Profile Option Errors and Warnings

This section provides information on profile options that may be invalid. All profile option values in question are listed for your review. You need to correct the profile options manually. The report may list any combination of the following violations:

Not all responsibilities in current operating unit have the same option value

All responsibilities in one operating unit must share the same values for the following profile options:

- HR: Business Group
- Tax: Allow Override of Tax Code
- Tax: Invoice Freight as Revenue
- Tax: Inventory Item for Freight

The Validation Report indicates a violation for the operating units with inconsistent profile option values and lists the values, which are set at the responsibility level, or are defaulted from the site or application level.

Option is not set to correct value

The INV: Intercompany Currency Conversion profile option must be the same for the responsibilities involved in intercompany transactions. The system predefines a value of Corporate for this profile at the site level. The Multi-Org Setup Validation Report indicates a violation for the operating units if the value is overridden at the site or application levels.

Sequential Numbering option differs among responsibilities

All responsibilities in one operating unit must share the same sequence numbering option. The Multi-Org Setup Validation Report indicates a violation for the operating units with inconsistent profile option values and lists the values, which are set at the responsibility level, or which are defaulted from the site or application level.

CHAPTER

3

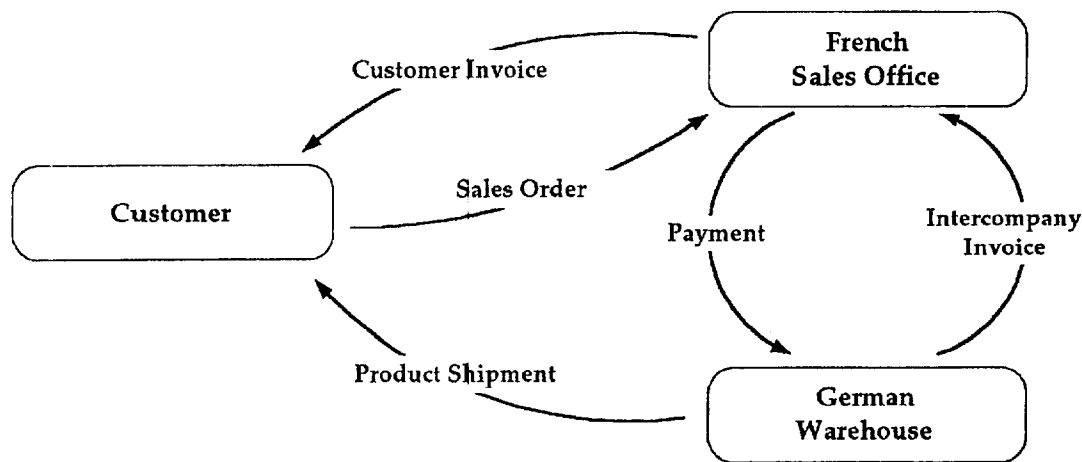
Intercompany Accounting

This chapter tells you everything you need to know about intercompany accounting, including:

- Selling from one organization and shipping from another
- Automatic creation of intercompany invoices

Intercompany Invoicing

When a sales order is entered in an operating unit, the shipping warehouse is often part of a separate operating unit belonging to a separate set of books. After the sales order is shipped to the customer, the inventory asset account for the shipping organization is credited and the cost of goods sold account is debited. At the same time, sales revenue must be recognized in the order entry organization. Since the cost of goods sold account is derived from the shipping organization, if the two organizations belong to two different operating units, the system must perform certain accounting distributions to record the intercompany revenue, receivable, and payable entries.



Basic Business Needs

Oracle Applications provides you with the features you need to satisfy the following basic business needs.

- Enter sales orders from one operating unit and assign a shipping warehouse under a different operating unit.
- Automatically create intercompany payable and receivable invoices to record intercompany revenue, payables and receivables.
- Eliminate intercompany profit in the general ledger.

Major Features

Automatic Intercompany Sales Recognition

You can assign a shipping warehouse under a different operating unit to a sales order. The system automatically records an intercompany sale between the shipping organization and the selling organization by generating intercompany invoices.

Segregating Trade and Intercompany COGS and Revenue

You can define different accounts for Trade and Intercompany COGS and Sales Revenue to eliminate intercompany profits' Transfer Pricing. You can establish your transfer pricing in intercompany invoices through Oracle Order Management and Shipping Execution's price lists.



Overview of Pricing
(Oracle Order Management and Shipping Execution User's Guide)

Extensible Architecture

At key event points in the programs, stored procedure callbacks have been installed, including invoice and invoice line creations, and the transfer pricing algorithm. You can insert PL/SQL code to append or replace existing program logic to fulfill your specific business requirements.

Intercompany Invoicing Accounting Details

A sales office in the French operating unit sells products to a customer. The products are then shipped from a shipping organization under the German operating unit. When the shipments of the order are confirmed, inventory transactions record the material movements. These inventory transactions generate the accounting distributions shown in the following table, which are recorded in the German operating unit's Oracle Inventory accounting distribution table MTL_TRANSACTION_ACCOUNTS:

Account	Debit	Credit
Cost of Goods Sold (via Account Generator)	German Unit Cost x Qty	
Inventory Valuation		German Unit Cost x Qty

The Oracle Receivables Interface process in Oracle Order Management and Shipping Execution creates the invoice distributions shown in the following table, in Oracle Receivables (applicable taxes excluded) for the French operating unit:

Account	Debit	Credit
Trade Receivables	(Selling Price x Qty) + Freight Amount	
Trade Revenue		(Selling Price x Qty)
Freight		Freight Amount

The Create Intercompany AR Invoices process generates an intercompany receivable invoice from the German legal entity to the French legal entity using the AutoInvoice mechanism. The transaction date stamp on the inventory shipment transaction is the transaction date in the invoice lines. The transfer price of the product is extracted from the price list associated with the two legal entities.

The inventory transaction in the German shipping organization is shown in the following table:

Account	Debit	Credit
Intercompany COGS	German Unit Cost x Qty	
Inventory Valuation		German Unit Cost x Qty

The customer invoicing transaction in the French sales organization is shown in this table:

Account	Debit	Credit
Trade Receivables	Selling Price x Qty	
Trade Revenue		Selling Price x Qty

The intercompany receivable set up in the German shipping organization is shown in the following table:

Account	Debit	Credit
Intercompany Receivables	Transfer Price x Qty	
Intercompany Revenue		Transfer Price x Qty

The currency defined in the price list is the transaction currency for the new accounting distributions. The applicable exchange rates are applied by AutoInvoice if the currency of the price list is different from functional currencies of the two legal entities. After AutoInvoice is invoked to process the intercompany Oracle Receivables invoices, a second concurrent program, Create Intercompany AP Invoices, creates intercompany payable invoices from the intercompany receivable invoices and the corresponding accounting distributions.

The following table shows the inventory transaction recorded in the German shipping organization:

Account	Debit	Credit
Cost of Goods Sold (via Account Generator)	German Unit Cost x Qty	
Inventory Valuation		German Unit Cost x Qty

The next table shows the recording of the customer invoice by the French sales organization:

Account	Debit	Credit
Trade Receivables	(Selling Price x Qty) + Freight Amount	
Trade Revenue		Selling Price x Qty
Freight		Freight Amount

The next table shows the intercompany Oracle Receivables invoice to the French sales organization, recorded by the German shipping organization:

Account	Debit	Credit
Intercompany Receivables	(Transfer Price x Qty) + Freight Amount	
Intercompany Revenue		Transfer Price x Qty
Freight		Freight Amount

The last table shows the intercompany Oracle Payables invoice to German shipping organization, recorded by the French sales organization:

Account	Debit	Credit
Trade COGS (via Account Generator)	Transfer Price x Qty	
Freight (Oracle Payables)	Freight Amount	
Intercompany Payable		(Transfer Price x Qty) + Freight Amount

Prerequisites

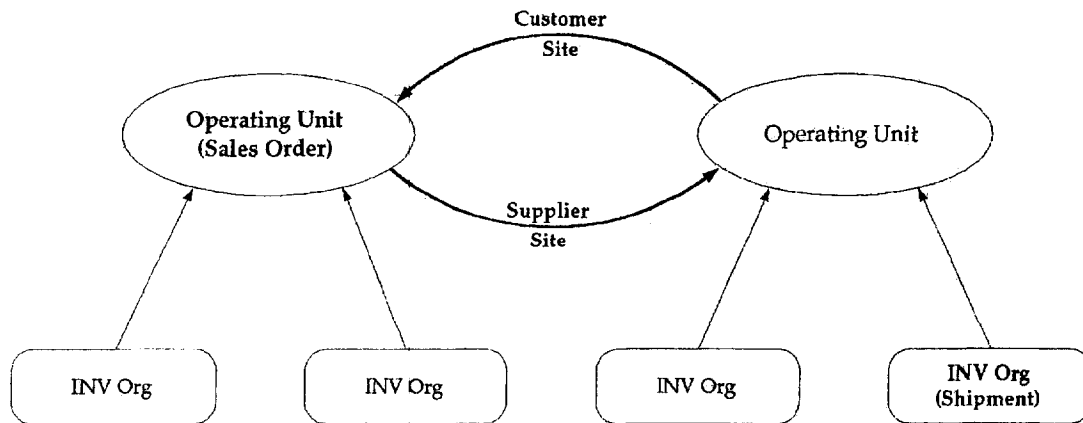
Before using the Intercompany Invoicing processes, you must complete the following steps:

- Define your intercompany relations.
- Define your Oracle Receivables system options.
- Define your Oracle Payables system options.
- Define your tax structures in Oracle Payables and Oracle Receivables.
- Set up the Account Generator for the Cost of Goods Sold accounts.

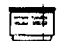
Define Intercompany Relations

For each pair of selling and shipping operating units, you must define:

- a customer/customer site combination, defined in the shipping organization's operating unit, to represent each selling entity. This customer/customer site combination is used in intercompany receivable invoices
- an invoice transaction type defined in the shipping organization's operating unit
- a supplier/supplier site combination, defined under the selling organization, to represent each shipping entity. This supplier/supplier site combination is used in intercompany payable invoices
- an operating unit to each inventory organization for creating an intercompany Oracle Receivables invoice



The customer site of the intercompany receivable invoice is determined from the selling operating unit, and the supplier site of the intercompany payable invoice is determined from the shipping operating unit. The currency of the price list associated with the customer site is the currency in the intercompany invoices.

 Define Intercompany Relations (See page 3 – 16)

Oracle Receivables System Options

Since the Create Intercompany AR Invoices process does not always generate sales credit information to Oracle Receivables, the Require Salesrep flag must be set to No.



Define System Options
(Oracle Receivables User Guide)

Oracle Receivables Invoice Batch Source

An invoice batch source indicates the source of an invoice that you transfer to Oracle Receivables. It also determines how AutoInvoice processes an invoice. All intercompany invoices generated by the Create Intercompany AR Invoices process use the predefined batch source *Intercompany*. Modifying this invoice batch source may cause unexpected failures during AutoInvoice.



Attention: AutoAccounting uses sales credit records to construct distribution accounts based on salesreps. If you use salesreps in one or more account segment assignments for a particular operating unit, set the Allow Sales Credit Flag to Yes for the Intercompany batch source in that operating unit.

Tax Structure in Oracle Payables and Oracle Receivables

If you need to apply tax to the intercompany invoices, you must set up identical tax structures (tax codes and rates) in Oracle Payables and Oracle Receivables so intercompany Oracle Receivables invoices can be mirrored correctly into intercompany Oracle Payables invoices.



Taxes
(Oracle Payables User Guide)



Tax Overview
(Oracle Receivables User Guide)

Account Generator

The Create Intercompany AP Invoices process uses the Account Generator process named *Inventory Cost of Goods Sold Account* to construct the expense account for regular invoice lines. You must set

up this process before you can use the Create Intercompany AP Invoices process.



Create Intercompany AP Invoices (See page 3 – 14)



Using the Account Generator to Generate the Intercompany COGS Account (See page B – 2)

User Procedures

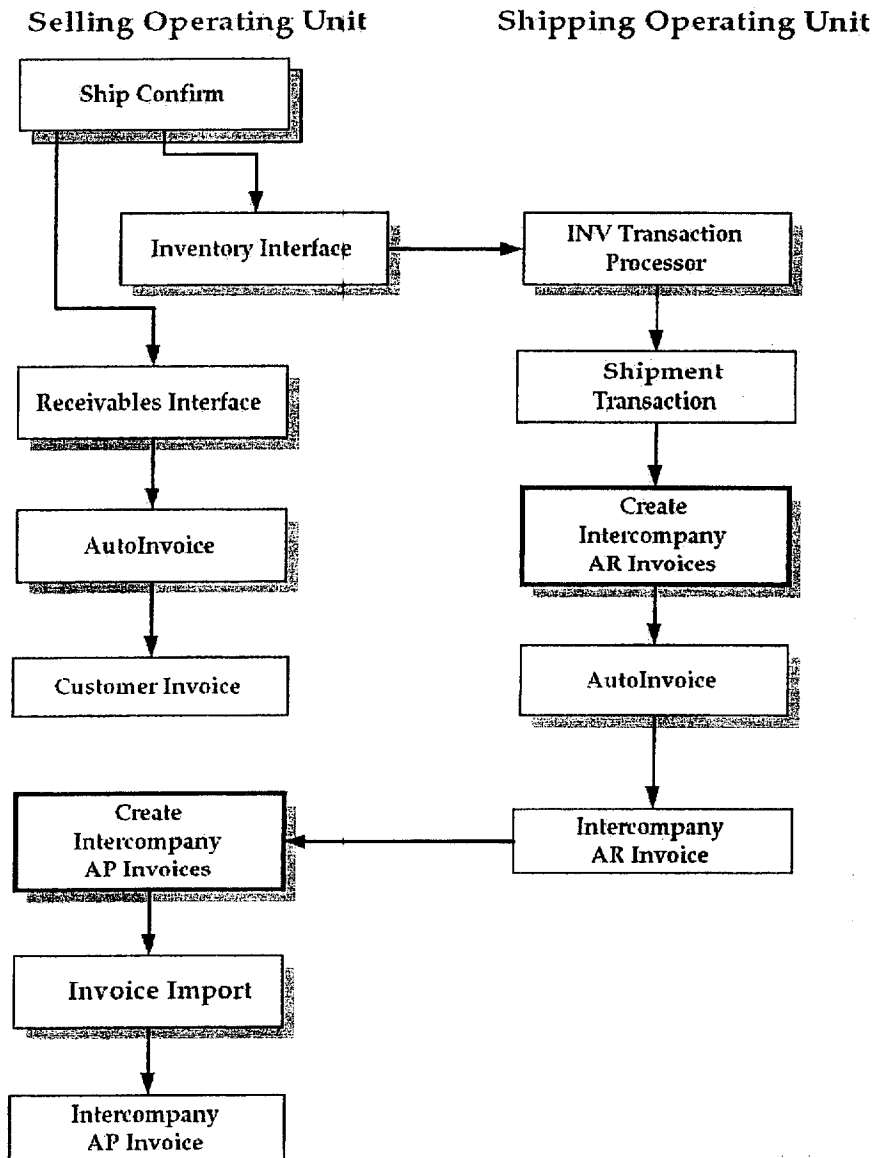
Period Close Procedures

Before closing accounting periods in Oracle Inventory, Oracle Receivables and Oracle Payables, it is recommended that you execute this program and process all outstanding intercompany shipment transactions before performing other period close procedures, including but not limited to posting to Oracle General Ledger, in the respective applications.

Foreign Currency Exchange Rates

The intercompany invoice creation programs do not prompt you to enter an exchange rate when the intercompany invoice is a foreign currency invoice. You should ensure that all the required exchange rates are available in Oracle General Ledger.


Process Flow for Intercompany Invoicing



Create Intercompany AR Invoices

Use this process to create intercompany receivables invoices for product shipments and freight charges that are initiated from sales orders belonging to a different operating unit.

Each intercompany invoice line you create is inserted into the Oracle Receivables invoice interface tables and is processed by Oracle Receivables' AutoInvoice process. The Create Intercompany AR Invoices process uses its own batch source, *Intercompany*, and its own Transaction Line Flexfield definition. Other information required to create an invoice, such as customer, customer site, and transaction type, is retrieved from the intercompany relations.

 **Attention:** To insert rows for multiple operating units, use the ALL views and populate the `org_id` column explicitly. You can determine an operating unit's `org_id` by querying the `HR_OPERATING_UNITS` view:

```
SELECT name, organization_id
FROM HR_OPERATING_UNITS;
```


When you import rows *from* open interface tables, only rows for your current operating unit are processed.

Profile Options

The profile options listed in the following table affect the Create Intercompany AR Invoices process:

Profile Option	Effect on Process
INV: Intercompany Currency Conversion	Determines the conversion type for foreign currency invoices
Tax: Allow Override of Tax Code	Determines whether tax code information should be passed to Oracle Receivables for freight
Tax: Invoice Freight as Revenue	Indicates whether freight lines should be invoiced as revenue lines
Tax: Inventory Item for Freight	Use this inventory item when freight lines are invoiced as revenue lines

Table 3-1 Create Intercompany AR Invoices: Profile Options (Page 1 of 1)

 **Attention:** The Create Intercompany AR Invoices program examines the profile option values of all the responsibilities for an operating unit. If only one responsibility has a particular

profile option set, that value is used. If values exist for two or more responsibilities, and the values are identical, the value is used. If profile option values differ between responsibilities, the Create Intercompany AR Invoices program produces an error. Finally, if a profile option is not set for any responsibility, the site value is used.

Invoicing Shipment Transactions

The Create Intercompany AR Invoices process creates invoice lines for order shipment transactions in Oracle Inventory where the shipping warehouse does not belong to the order entry operating unit.

Invoicing Freight Charges

The Create Intercompany AR Invoices process creates invoice lines for freight charges in Oracle Order Management and Shipping Execution when the shipment transactions from the corresponding picking slips are being invoiced.

AutoInvoice

The Oracle Receivables AutoInvoice program processes the records inserted into the interface tables by the Create Intercompany AR Invoices process. The AutoInvoice program validates the records and creates invoices, invoice lines, distributions and payment schedules for both shipment transactions and freight charges.



Using AutoInvoice
(Oracle Receivables User Guide)

Intrastat Movement Statistics

When movement statistics records are kept for the shipment transactions, the Create Intercompany AR Invoices program delinks the customer invoice from the movement record and creates a new link to the intercompany invoice.

Process Submission

From an Oracle Inventory responsibility, use the Submit Request window and enter Create Intercompany AR Invoices in the Request Name field. Then enter the parameters shown below.

Process Parameters

Shipping Operating Unit

Enter the shipping operating unit for which you want to generate intercompany Oracle Receivables invoices. Leave this field blank to generate invoices for all shipping operating units.

Line Description

Enter the description you wish to appear on the invoice lines. Leave this field blank if you want to use the item description as the invoice line description.

Create Intercompany AP Invoices

Use this process to copy intercompany receivable invoices created by the Create Intercompany AR Invoices process into Oracle Payables. This process creates invoices in the XpenseXpress tables with its own import source name and is processed by Oracle Payables' Invoice Import process. Other information required to create an invoice, such as supplier and supplier site, is retrieved from the intercompany relations.

Profile Option

The profile option listed in the following table affects the operation of the Create Intercompany AP Invoices process:

Profile Option	Effect on Process
INV: Intercompany Currency Conversion	Determines the conversion type for foreign currency invoices

Table 3 – 2 Create Intercompany AP Invoices: Profile Option (Page 1 of 1)

Payables Invoice Import

The Oracle Payables Invoice Import program processes the records inserted into the interface tables by the Create Intercompany AP Invoices process. The Invoice Import program validates the records and creates invoices, invoice distributions and payment schedules. All invoices created by the Create Intercompany AP Invoices program have Intercompany as their source.



Invoice Import
(Oracle Payables User Guide)



Attention: To insert rows for multiple operating units, use the ALL views and explicitly populate the org_id column. You can determine an operating unit's org_id by querying the HR_OPERATING_UNITS view:

```
SELECT name, organization_id  
FROM HR_OPERATING_UNITS;
```

When you import rows *from* open interface tables, only rows for your current operating unit are processed.

Intercompany Cost of Goods Sold Account

The Create Intercompany AP Invoices process uses the Account Generator to construct a Cost of Goods Sold Accounting Flexfield combination (Intercompany COGS account) for each regular invoice line in the intercompany payables invoices.



Using the Account Generator to Generate the Intercompany COGS Account (See page B – 2)

Process Submission

From an Oracle Inventory responsibility, use the Submit Request window and enter Create Intercompany AP Invoices in the Request Name field. Then enter the parameters shown below.

Process Parameters

Selling Operating Unit

Enter the selling operating unit for which you want to copy intercompany Oracle Receivables invoices and generate intercompany Oracle Payables invoices. Leave this field blank to generate invoices for all selling operating units.

Header Description

Enter the description you want to appear on the invoices. Leave this field blank if you do not want to have a description for the invoices.

Line Description

Enter the description you want to appear on the invoice line. Leave this field blank if you want to copy the invoice line description from the Intercompany Oracle Receivables invoices.

Define Intercompany Relations

Intercompany Relations

Operating Unit

Shipping []

Selling []

AR Invoicing for Shipping

Customer []

Number []

Location []

Transaction Type []

AP Invoicing for Selling

Supplier []

Site []

Freight Account []

Revalue Average

Use the Intercompany Relations window to define intercompany relations used for creating intercompany invoices from cross-operating unit sales order shipments.

Prerequisites

Before you can use this window you must do the following:

- Define a customer and customer site in the inventory organization's operating unit that corresponds to the order entry operating unit.

- Define a supplier and supplier site in the order entry operating unit that corresponds to the shipping organization.
- Define the invoice transaction type.

Intercompany Relations Window Reference

Selling Operating Unit

Enter the selling operating unit for which to define an intercompany relationship. The list of values displays only the organizations defined as operating units for which no intercompany relationship has been defined.

Shipping Operating Unit

Enter the Shipping Operating Unit for which to define an intercompany relationship. The list of values displays only the organizations defined as operating units. If the window is called from an Oracle Manufacturing responsibility, it automatically displays the operating unit associated with the current inventory organization and this field becomes non-updatable.

Customer

Enter the customer associated with the shipping organization that corresponds to the selling organization. You may enter either the customer name or customer number.



Enter Customer Information
(Oracle Receivables User Guide)

Customer Location

Enter the customer location, if the customer has multiple locations. This customer location must be a "Bill To" site.

Transaction Type

Enter the invoice transaction type to be used on the intercompany Oracle Receivables invoices.



Define Transaction Types
(Oracle Receivables User Guide)

Supplier

Enter the supplier associated with the selling organization that corresponds to the shipping organization.



About Suppliers
(*Oracle Payables User Guide*)

Supplier Site

If it is available, enter the supplier site associated with the selling organization that corresponds to the shipping organization. This supplier site must be a purchasing site.

Freight Account

Enter the freight account used as the expense account in the intercompany Oracle Payables invoices in the line type 'FREIGHT'. The list of values is restricted to the Chart of Accounts of the selling organization.

Revalue Average

Enable this check box if you want to revalue the average cost in the selling operating unit when creating the intercompany Oracle Payables invoices.

CHAPTER

4

Technical Overview

This chapter gives you an overview of the technical architecture of multiple organizations, including:

- Oracle schemas
- Data partitioning via database views
- Case study of a multiple organization implementation
- Converting to Multiple Organizations
- Seed data replication
- Multiple Organizations Reporting API
- Limitations

Multiple Organization Support Technical Overview

The multiple organization support feature uses native database features to build a security layer on top of a single installation of Oracle Applications. This layer of security provides the necessary data partitioning, while at the same time minimizes the number of potentially destabilizing changes to the application code itself. The security layer is provided using database views which allow access to the partitioned data without any changes to the applications code.

The APPS Schema

The APPS schema is an ORACLE schema that has access to the complete Oracle Applications data model. This schema is maintained by AutoUpgrade. The schema contains synonyms to all tables and sequences as well as all server-side code (stored procedures, views, and database triggers).

For ERP applications, data partitioning is performed by database views. These views reside in the APPS Oracle schema and derive the appropriate operating unit context from an RDBMS variable. See: RDBMS Variable: page 4 – 5.

All applications code is run against the APPS schema. The Applications database architecture is now the same for a Multiple Organizations and non-Multiple Organizations implementation.

Multiple Organization Tables

Multiple Organizations in Oracle Applications is enabled by partitioning some database tables by operating unit. Other tables are shared across operating units (and thus across sets of books).

In general, the following criteria determine if a table needs to be partitioned:

- The table contains a GL Account Code (code combination ID).
- There is a business reason for the table to be partitioned (for example, the entity should not be shared).
- The table contains transaction data.
- The table is an interface table where data being loaded is partitioned.

- The table includes a foreign key to a partitioned table and is accessed independently (in other words, not just as a child of a partitioned table).

Applications with Partitioned Tables

The following Oracle Applications products contain database tables that are secured by operating unit:

- Oracle Cash Management
- Oracle Order Management and Shipping Execution
- Oracle Payables
- Oracle Property Manager
- Oracle Projects
- Oracle Purchasing
- Oracle Release Management
- Oracle Receivables
- Oracle Sales Compensation
- Oracle Sales and Marketing
- Oracle Service
- European Localizations
- Latin America Localizations
- Regional Localizations

For detailed information about tables in each of these products, refer to the Technical Reference Manual for each product. The Technical Reference Manuals contain a list of Single Organization Views, each of which corresponds to a partitioned table. The name of each corresponding partitioned table is the view name appended by "_ALL" or "_ALL_B (for MLS tables).

Note: Some of the partitioned tables were created by abbreviating the view names, then adding "_ALL". This was done when the resulting length would have otherwise exceeded the allowable length for table names.

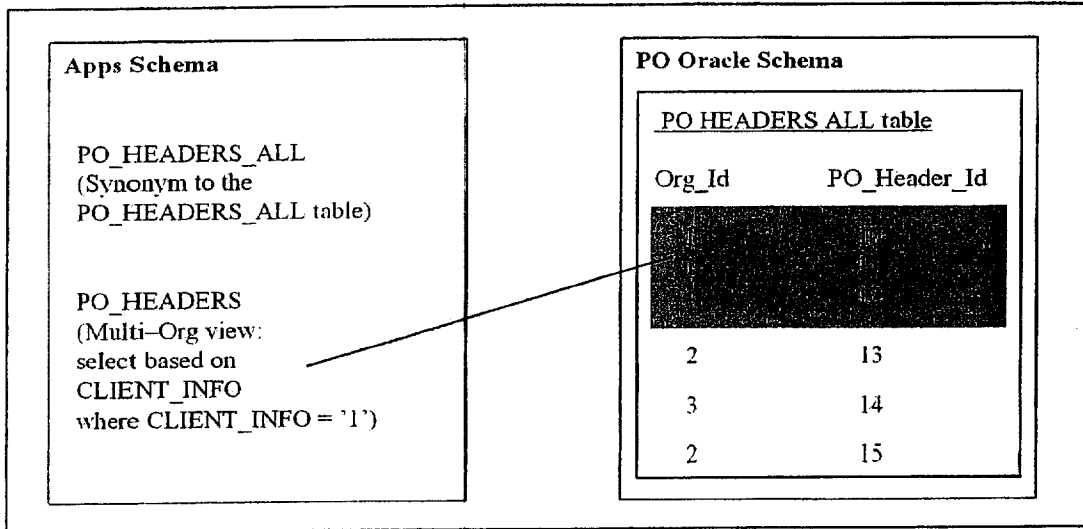
Tables Partitioned by Business Group

All of the tables in these products that do not end in `_ALL` are shared across all operating units, with the exception of the following tables, which are partitioned by Business Group:

- `PA_IND_RATE_SCHEDULES` (Burden Schedules)
- `PA_RESOURCE_LISTS` (Resource Lists)

Matching Synonyms in the APPS Schema

The database architecture is the same for a Multi-Org and non Multi-Org installation, and uses the standard install tools feature that automatically creates synonyms in the APPS schema for each base product table and creates these synonyms with the same name as the base product tables. For example, the PO Oracle schema has a table named `PO_HEADERS_ALL` and the APPS schema has a corresponding synonym of the same name, `PO_HEADERS_ALL`. The `PO_HEADERS_ALL` synonym can be used to access unpartitioned data. See the figure below.



RDBMS Variable

A global variable exists in the Oracle database called CLIENT_INFO, which is 64 bytes long. The first 10 bytes are used to store the operating unit ID (or ORG_ID) for the Multiple Organization Support feature. The CLIENT_INFO context is derived from a profile option that the user sets for each responsibility as part of the Multi-Org setup steps.



Setting Up a Multi-Organization Enterprise (See page 2-2)

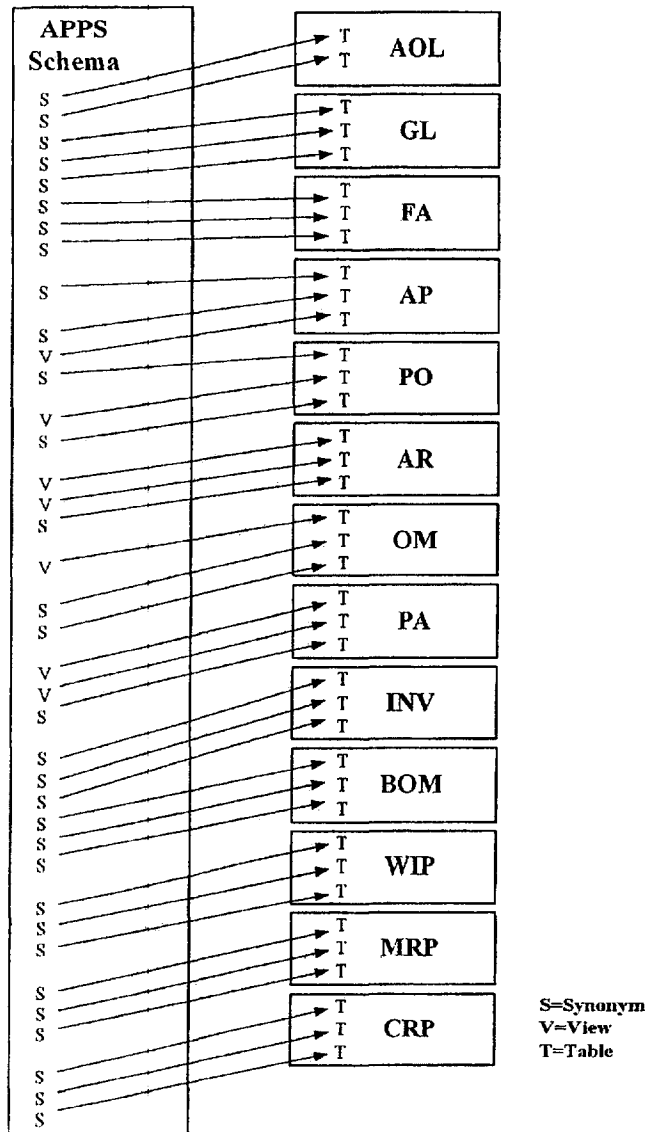
Multi-Org views are partitioned by ORG_ID. The ORG_ID value is stored in the CLIENT_INFO variable.

In Release 11i, it is as follows:

```
select * from <table name>_ALL
where
NVL(ORG_ID, NVL(TO_NUMBER(DECODE(SUBSTRB(USERENV('CLIENT_INFO'),1,1),
' ', NULL, SUBSTRB(USERENV('CLIENT_INFO'),1,10))),-99)) =
NVL(TO_NUMBER(DECODE(SUBSTRB(USERENV('CLIENT_INFO'),1,1),
' ',
NULL,
SUBSTRB(USERENV('CLIENT_INFO'),1,10))),-99)
```

Database Diagram

The figure below shows the relationships between the various database objects.



Convert to Multiple Organizations

The Convert to Multi-Org program is an option available in ADADMIN. This task converts a standard product group into a Multi-Org product group. You can choose this option only if you do not already have Multi-Org installed in your database and if you do not currently have Multiple Sets of Books Architecture installed in your database.

Before running this step, you must define at least one operating unit and set the site-level profile option MO: Operating Unit.

The Convert to Multi-Org program does the following:

- Populates the ORG_ID column with the new operating unit you defined at the site level profile option MO: Operating Unit.
- Sets ORG_ID to NULL for records that are shared seed data.
- Sets the MULTI_ORG_FLAG in the FND_PRODUCT_GROUPS table to Y. The Convert to Multi-Org option is not displayed on the Database Objects menu if this flag is set to Y
- Runs the replicate seed data program. If you define additional operating units, the seed data is replicated for all operating units.

Example

This example examines the processes of the Convert to Multi-Org program when an upgrade is performed from a non Multi-Org setup to a Multi-Org setup.

Step 0: Before upgrade (non Multi-Org)

Consider a partitioned table in a non Multi-Org database, as depicted in the following table:

ORG_ID	ID (Primary Key)	Description
NULL	1	Existing Data
NULL	2	Existing Data
NULL	100	Existing Data

Table 4 - 1 Non Multi-Org Database with Existing Data (Page 1 of 1)

At this point, AutoUpgrade has not yet been executed. Therefore, the option to convert to Multiple Organization architecture has not yet been selected, and the MULTI_ORG_FLAG is *not* set to Y.

Step 1: AutoUpgrade is Executed

When AutoUpgrade is executed to upgrade to the current release, the null table row is replicated, and the ORG_ID column is populated with '-3113' to indicate that the row is seed data that should later be replicated to each operating unit. At this point, the adadmin option to convert to Multiple Organization architecture has not yet been selected. This is condition 4 in Table 4 – 5. The following table shows the results after AutoUpgrade is run.

ORG_ID	ID (Primary Key)	Description
-3114	1	Seed Data, Shared
NULL	1	Existing Data. Replicated if the data does not exist
-3113	2	Seed Data, Operating Unit-Specific
NULL	2	Existing Data. Replicated if the data does not exist
NULL	100	Existing Data

Table 4 – 2 Replicate Seed Data and Set ORG_ID to NULL (Page 1 of 1)

Step 2: Define Operating Units

In this example, three operating units are defined with the following values for ORG_ID:

100, 101, 102

The site-level MO: Operating Unit profile option is set to the operating unit with the value ORG_ID 100.

Step 3: Run Adadmin to Convert to Multiple Organization Architecture

As described in the Multi-Org setup steps, you must define your organization structure before selecting the Convert to Multiple Organization architecture option in adadmin.

When the adadmin option, Convert to Multiple Organization architecture is selected, the MULTI_ORG_FLAG is set to Y, and the ORG_ID column is automatically populated for the new operating units. In this example, the seed data is replicated for three operating units as follows: 100, 101, and 102.

As part of the process of converting your existing installation to a multiple organization environment, you can choose an operating unit context for existing data. This "default operating unit" is established by setting the MO:Operating Unit profile at the site level. Suppose that

in the example depicted in the following table, the null ORG_ID is replaced with the ORG_ID '100'.

See: Installation Utilities (*Oracle Applications Installation*).

ORG_ID	ID (Primary Key)	Description
-3114	1	Seed Data, Shared
NULL	1	Existing Data. ORG_ID is set to NULL
-3113	2	Seed Data, Operating Unit-Specific
100	2	Existing Data. ORG_ID is set to 100
100	100	Existing Data. ORG_ID is set to 100

Table 4 - 3 Populate ORG_ID for the Existing Data (Page 1 of 1)

At the last phase of the Convert to Multiple Organization architecture process, the seed data replication program is executed. Seed data is then replicated to each operating unit: 100, 101, 102. This is condition 2 in Table 4 - 5. The following table illustrates the results:

ORG_ID	ID (Primary Key)	Description
-3114	1	Seed Data, Shared
NULL	1	Existing Data. ORG_ID is set to NULL
-3113	2	Seed Data, Operating Unit-Specific
100	2	Existing Data. ORG_ID is set to 100
101	2	Seed Data for ORG_ID 101
102	2	Seed Data for ORG_ID 102
100	100	Existing Data. ORG_ID is set to 100

Table 4 - 4 Replicate Seed Data for all Operating Units (Page 1 of 1)

Seed Data Replication

An enterprise structure consisting of multiple organizations requires the ability to replicate seed data to multiple operating units. The Multiple Organization Support feature provides a program that performs this function.

Seed data is replicated under the following circumstances:

- An installation or upgrade is performed.
- The Convert to Multi Org task option available in the AD Administration utility (adadmin) is selected.
- The Replicate Seed Data program is submitted from the Submit Request window.

Installation or Upgrade

The seed data replication program is executed by AutoUpgrade during the conversion to Multiple Organizations architecture.

Convert to Multiple Organization Architecture

When the adadmin option, Convert to Multiple Organization architecture is selected, the Multi-Org switch is automatically turned on and the MULTI_ORG_FLAG in the _FND_PRODUCT_GROUPS table is set to Y. The seed data replication program is then executed and processes differently depending upon the value of the MULTI_ORG_FLAG.

Submit the Replicate Seed Data Program

You must run this process after you add new operating units and before you implement your products. You can submit the Replicate Seed Data concurrent program via the System Administrator responsibility.

How Does the Seed Data Replication Program Work?

The seed data replication program operates in two modes:

- single organization

This mode applies when the seed data replication program is executed within the context of a particular operating unit (or ORG_ID).

- all organizations

This mode applies when the seed data replication program is executed without an operating unit context. The seed data replication program performs different functions depending upon

- the mode in which it is operating
- the value of the MULTI_ORG_FLAG

- the value of the ORG_ID of each operating unit

An ORG_ID of -3113 identifies a table row of seed data that should be replicated to each operating unit. An ORG_ID of -3114 identifies a table row of seed data that should be replicated as null, and shared across all operating units.

The following table illustrates the seed data replication program functionality when the MULTI_ORG_FLAG is Y and when it is not Y. Each condition is numbered for reference.

MULTI_ORG_FLAG	Single Organization	All Organizations
=Y	Replicates seed data for the one organization (condition 1)	Replicates seed data for all organizations (condition 2)
<>Y	No action (condition 3)	Replicates seed data for NULL ORG_ID (condition 4)

Table 4 - 5 (Page 1 of 1)

Multiple Organizations Reporting API

Oracle Applications products provide many predefined reports that you can use to report across operating units. However, nearly every organization occasionally needs to create custom reports for Multiple Organizations reporting. Oracle Applications provides the Multiple Organizations Reporting API that you can use to create custom multiple organizations reports.

Implementation Steps

The following are the steps you need to complete to allow reports to run across multiple organizations. This section assumes you already have a thorough knowledge of:

- Oracle Reports
- The standards presented in the *Oracle Applications User Interface Standards* and in the *Oracle Applications Developer's Guide*

Step 1 Define report parameters

Use the Oracle Reports designer to create the report parameters shown in the following table:

Name	Data Type	Width	Initial Value
P_REPORTING_LEVEL	Character	30	Null
P_REPORTING_ENTITY_ID	Number	15	
P_ORG_WHERE	Character	2000	Null

The P_REPORTING_LEVEL and P_REPORTING_ENTITY_ID parameters will contain data passed by the user, when the report is run.

The P_ORG_WHERE lexical parameter is used in the where clause of your report query. You must create one P_ORG_WHERE lexical parameter for each partitioned table used in your report query.

Step 2 After parameter form trigger

The following changes should be made in the after parameter form trigger of each report that is to be run across organizations:

Initialize the security context

Call the Initialize procedure in the XLA_MO_REPORTING_API server side package to initialize the security context for the current database session.

```
XLA_MO_REPORTING_API.Initialize(:P_REPORTING_LEVEL,  
:P_REPORTING_ENTITY_ID, 'AUTO');
```

Note: The last argument to the Initialize procedure is the predicate type (P_PRED_TYPE), which can be one of the following:

- AUTO – The API will determine the predicate type for you
- INSTR – Uses the database built-in function to check the existence of the ORG_ID value
- IN_LIST – Uses the IN (element1, element2, ...) statement
- IN_SELECT – Uses a non correlated sub-query
- EXISTS – Uses a correlated sub-query

Initialize the lexical parameters

Call the `Get_Predicate` function in the `XLA_MO_REPORTING_API` server side package to initialize the lexical parameter(s) `P_ORG_WHERE`. You need to pass the table alias to this function. The function will generate the appropriate SQL predicate at runtime.

For example:

If you need to use `AR_PAYMENT_SCHEDULES_ALL` and `RA_CUST_TRX_TYPES_ALL` tables in your report, then you need to define lexical parameters `P_ORG_WHERE_PS` and `P_ORG_WHERE_CTT` and initialize them as shown below:

```
:P_ORG_WHERE_PS :=  
XLA_MO_REPORTING_API.Get_Predicate('PS', null);  
:P_ORG_WHERE_CTT :=  
XLA_MO_REPORTING_API.Get_Predicate('CTT', null);
```

Note: The `Get_Predicate` function has three arguments. The third argument, `p_variable_override`, uses a default value of `P_REPORTING_ENTITY_ID`. You must use `P_REPORTING_ENTITY_ID` as your parameter name in step 1, if you do not override the parameter name in the `Get_Predicate` function in `XLA_MO_REPORTING_API`. The API uses the bind variable `P_REPORTING_ENTITY_ID` in the generated predicates to make cursors shareable.



Warning: You should not call the `XLA_MO_REPORTING_API` from the Before Report trigger. If you call the `Get_Predicate` function in the Before Report trigger you receive the "ORA-1008: not all variable bound" error, since the generated predicate may contain a bind variable.

Step 3 Call FND_SRWINIT in the Before Report Trigger

Always call `FND_SRWINIT` from the Before Report Trigger to set the profile option values and allow Oracle Application Object Library user exit to detect that they have been called by a Oracle Reports program.

```
SRW.USER_EXIT('FND_SRWINIT');
```

See: *User Exits Used in Oracle Reports (Oracle Applications Developer's Guide)*

Step 4 Call validation procedures to validate parameters (optional)

If you do not use the predefined value sets to validate your report parameters, you should call the validation procedures from the Before Report trigger.

```
XLA_MO_REPORTING_API.Validate_Reporting_Level(:p_reporting_level);

XLA_MO_REPORTING_API.Validate_Reporting_Entity(:p_reporting_level,
:p_reporting_entity_id);
```

Step 5 Call FND_SRWEXIT in the after report trigger

Always call FND SRWEXIT from the After Report Trigger to ensure that all the memory allocated for Oracle Application Object Library user exits is freed up properly.

```
SRW.USER_EXIT('FND SRWEXIT');
```

See: User Exits Used in Oracle Reports (*Oracle Applications Developer's Guide*)

Step 6 Refer to multi-org tables in report query and include the lexical parameters in the where clause

You should use the Multiple Organizations tables in the APPS schema to access the information instead of partitioned views. Include the P_ORG_WHERE parameter(s) in the where clause of your report query.

For example:

If you are modifying an existing report to run across organizations, then you need to change the report query reference to partitioned views as shown below :

Before enabling Multiple Organizations Reporting:

```
SELECT PS.PAYMENT_SCHEDULE_ID,
       PS.AMOUNT_DUE_ORIGINAL
       CUST.CUSTOMER_NAME,
       CTT.NAME
FROM   AR_PAYMENT_SCHEDULES_ALL PS
       RA_CUST_TRX_TYPES CTT ,
       RA_CUSTOMERS CUST
WHERE  PS.CUSTOMER_ID = CUST.CUSTOMER_ID
AND    PS.CUST_TRX_TYPE_ID = CTT.CUST_TRX_TYPE_ID
AND    PS.CUSTOMER_ID = CUST.CUSTOMER_ID
```

After enabling Multiple Organizations Reporting:


```

SELECT PS.PAYMENT_SCHEDULE_ID,
       PS.AMOUNT_DUE_ORIGINAL,
       CUST.CUSTOMER_NAME,
       CTT.NAME
FROM   AR_PAYMENT_SCHEDULES_ALL PS ,
       RA_CUST_TRX_TYPES_ALL CTT,
       RA_CUSTOMERS CUST
WHERE  PS.CUSTOMER_ID = CUST.CUSTOMER_ID
AND    PS.CUST_TRX_TYPE_ID = CTT.CUST_TRX_TYPE_ID
AND    PS.CUSTOMER_ID = CUST.CUSTOMER_ID
&P_ORG_WHERE_PS
&P_ORG_WHERE_CTT

```

At runtime, after enabling Multiple Organizations Reporting:

The call to XLA_MO_REPORTING_API fills in the lexical parameters at runtime. As a result the query would look like:

```

SELECT PS.PAYMENT_SCHEDULE_ID,
       PS.AMOUNT_DUE_ORIGINAL,
       CUST.CUSTOMER_NAME,
       CTT.NAME
FROM   AR_PAYMENT_SCHEDULES_ALL PS ,
       RA_CUST_TRX_TYPES_ALL CTT ,
       RA_CUSTOMERS CUST
WHERE  PS.CUSTOMER_ID = CUST.CUSTOMER_ID
AND    PS.CUST_TRX_TYPE_ID = CTT.CUST_TRX_TYPE_ID
AND    PS.CUSTOMER_ID = CUST.CUSTOMER_ID
AND    (NVL(PS.ORG_ID, -99) IN (-99, 204, 978))
AND    (NVL(CTT.ORG_ID, -99) IN (-99, 204, 978))

```

Step 7 Register your report with the Applications Object Library

Use the Concurrent Programs window to register your report (using a System Administrator responsibility). You need to register your report so that you can run it as a concurrent program. You need to define the Reporting Level and the Reporting Context parameters for your reports as follows:

Seq	10
Parameter	Reporting Label
Enabled	Yes
Value Set	XLA_MO_REPORTING_LEVEL
Default Type	SQL Statement

Default Value	<pre> SELECT meaning FROM fnd_lookups WHERE lookup_type = 'XLA-MO_REPORTING_LEVEL' AND lookup_code = (SELECT decode(nvl(multi_ org_flag, 'N'), 'N', '1000', 'Y', '3000') FROM fnd_product_groups) </pre>
Required	Yes
Prompt	Reporting Level
Token	P_REPORTING_LEVEL

Seq	20
Parameter	Reporting Context
Enabled	Yes
Value Set	XLA_MO_REPORTING_ENTITY
Default Type	SQL Statement

Default Value	<pre> SELECT DECODE(:\$FLEX\$.XLA_MO_REPORTING_LEVEL, '3000',o.name, '2000',o.name, '1000',g.name), g.name) FROM gl_sets_of_books g, hr_organization_units o, hr_organization_information o2, hr_organization_information o3, fnd_product_groups pg WHERE o.organization_id = DECODE(:\$FLEX\$.XLA_MO_REPORTING_LEVEL, '2000',TO_NUMBER(o3.org_information2), o3.organization_id) AND o3.org_information3 = g.set_of_books_id AND o2.organization_id = o3.organization_id AND o2.org_information_context '' = 'CLASS' AND o3.org_information_context = 'Operating Unit Information' AND o2.org_information1 = 'OPERATING_UNIT' AND o2.org_information2 = 'Y' AND o2.organization_id = fnd_profile.value_wmps('ORG_ID') AND NVL(pg.multi_org_flag, 'N') = 'Y' UNION SELECT sob.name, sob.name FROM gl_sets_of_books sob, fnd_product_groups pg WHERE set_of_books_id = fnd_profile.value_wmps('GL_SET_OF_BKS_ID') AND NVL(pg.multi_org_flag, 'N') = 'N' </pre>
Required	Yes
Prompt	Reporting Context
Token	P_REPORTING_ENTITY_ID



Warning: If you convert an existing report to run across operating units, you should verify if there are any value set reference to partitioned views and modify the value sets to reference the Multiple Organizations tables instead.

Multiple Organizations Reporting API

This section describes the Multiple Organizations reporting API that you can use to report across organizations. Use the `XLA_MO_REPORTING_API` to initialize the security context, generate the SQL predicate for the lexical parameters for `ORG_ID` at runtime, and validate the Multiple Organizations reporting parameters.

`XLA_MO_REPORTING_API.Initialize`

Summary	<pre>PROCEDURE Initialize (p_reporting_level IN VARCHAR2 DEFAULT '3000' , p_reporting_entity_id IN NUMBER , p_pred_type IN VARCHAR2 DEFAULT 'AUTO');</pre>
Description	Call this procedure in the After Parameter Form trigger to initialize the security context for the current database session.
Arguments	<p><code>p_reporting_level</code> - Indicates the level of reporting. Reporting Level can be Set of Books, Legal Entity or Operating Unit.</p> <p><code>p_reporting_entity_id</code> - Indicates the entity ID of the entity name falling within the reporting level.</p> <p><code>p_pred_type</code> - Indicates the SQL predicate type for the lexical parameters for <code>ORG_ID</code>. You can use one of the following predicate types :</p> <p>AUTO - The API will determine the predicate type for you INSTR - Uses the database built-in function to check the existence of the <code>ORG_ID</code> value IN_LIST - Uses the <code>IN (element1, element2, ...)</code> statement IN_SELECT - Uses a non-correlated sub-query EXISTS - Uses a correlated sub-query</p>

XLA_MO_REPORTING_API.Get_Predicate

Summary	<pre>Function Get_Predicate (p_alias IN VARCHAR2 DEFAULT NULL , p_hint IN VARCHAR2 DEFAULT NULL , p_variable_override IN VARCHAR2 DEFAULT ':p_reporting_entity_id ') RETURN VARCHAR2;</pre>
Description	Call this function for each Multiple Organizations table used in the report in the After Parameter Form trigger to generate the SQL predicate for the lexical parameters for the ORG_ID that you can use in the report query.
Arguments	<p>p_alias - Indicates the Multiple Organizations table alias.</p> <p>p_hint - Indicates the hints that you want to use in the SQL predicate.</p> <p>p_variable_override - Indicates the entity ID of the entity name falling within the reporting level. If you do not use P_REPORTING_ENTITY_ID as the reporting context parameter, you must pass the reporting context parameter as input.</p>

XLA_MO_REPORTING_API.Validate_Reporting_Level

Summary	<pre>Procedure Validate_Reporting_Level (p_reporting_level IN VARCHAR2</pre>
Description	Call this procedure optionally from the Before Report trigger to validate the reporting level. If the parameter p_reporting_level does not fall within the profile option value for MO: Top Reporting Level, you will see an error message in the log file.
Arguments	p_reporting_level - Indicates the level of reporting. Reporting level can be Set of Books, Legal Entity, or Operating Unit.

XLA_MO_REPORTING_API.Validate_Reporting_Entity

Summary	<pre>Procedure Validate_Reporting_Entity (p_reporting_level IN VARCHAR2 , p_reporting_entity_id IN NUMBER);</pre>
Description	Call this procedure optionally from the Before Report trigger to validate the reporting context parameter. If the parameter p_reporting_entity_id does not fall within the allowed values based on the profile option values for MO: Top Reporting Level and MO: Operating Unit, you will see an error message in the log file.
Arguments	<p>p_reporting_level - Indicates the level of reporting. Reporting level can be Set of Books, Legal Entity, or Operating Unit.</p> <p>p_reporting_entity_id - Indicates the entity ID of the entity name falling within the reporting level.</p>

XLA_MO_REPORTING_API.Get_Reporting_Level_Name

Summary	Function Get_Reporting_Level_Name RETURN VARCHAR2;
Description	Call this function to get the reporting level name.
Arguments	None

XLA_MO_REPORTING_API.Get_Reporting_Entity_Name

Summary	Function Get_Reporting_Entity_Name RETURN VARCHAR2;
Description	Call this function to get the reporting context name.
Arguments	None

Limitations of Multiple Organization Support

General Limitations

This section describes general limitations in the Multiple Organization Support feature.

Data Security

With the exception of data that is shared across organizations, all data is secured and striped by operating unit.

Multiple Organizations enabled products do not support viewing secured data across operating units. However, you can create custom reports or windows to view secured data across operating units by using the full-table views.

Centralization / Decentralization

Multiple Organizations enabled products process transactions within an operating unit. There is no additional support for centralization/decentralization of business functions. For example, the following combinations are not supported: centralized payables with decentralized purchasing, centralized purchasing with decentralized

payables, centralized receivables with decentralized orders, and centralized disbursement with decentralized vouchering.

Intercompany Support

Oracle Applications provides intercompany support in the following cases:

You can sell products through one legal entity and ship them from another. The system automatically recognizes the intercompany sale between the shipping organization and the selling organization by generating intercompany invoices.

Oracle Projects supports cross-charge transactions, which result when a resource from one organization charges to a project owned by another organization. Oracle Projects automatically generates appropriate project cross-charge accounting entries and, as needed, legal documents.

Global Supplier and Customer Registries

Supplier and customer tables are shared across operating units. However, you must define supplier sites and customer addresses for each operating unit. For example, if multiple operating units buy from the same supplier site, the supplier site must be defined once for each operating unit.

You continue to enter the Taxpayer ID and Federal/State Reportable options at the supplier and customer levels. If a global customer or supplier has subsidiaries in multiple countries, define a separate customer or supplier for each country.

You should specify distribution sets at the supplier site level. You should specify the invoice and offset tax codes at the supplier level only if you have identical tax codes across operating units. You can specify tax codes at the supplier site level.

You should not specify any centralized statements site, centralized dunning site, customer-level order type, or customer-level salesperson because customer addresses, order types, and salespeople are not shared across operating units. You should specify the tax code at the customer level only if you have identical tax codes across operating units. You should specify the carrier at the customer level only if you use the same item validation organization for all operating units, because carriers are secured by inventory organizations. You can specify order type, tax code, and carrier at the customer site level.

The Customer Merge process allows you to merge only addresses and sites within the same operating unit, since transactions are secured by operating unit. If a customer has active addresses in other operating units, the Customer Merge process does not make the customer inactive. In addition, the Customer Merge window does not allow deletion of the old customer/site if the old customer has addresses (active or inactive) in other operating units. See: *Oracle Receivables User Guide*.

Oracle Payables has a Supplier Merge process, which works similarly to the Customer Merge process in Oracle Receivables. See: *Oracle Payables User Guide*.

Standard product features show supplier and customer transactions for a given operating unit. The Supplier Customer Netting report, for example, calculates the net balance of receivable and payable transactions for the current operating unit. However, Multiple Organization provides a structure for simpler custom reports or windows to view global supplier and customer activities.

Receiving

You can receive against purchase orders only in the operating unit to which your responsibility is connected. As before, a purchase order's ship-to organization must be in the purchase order's set of books.

Internal Requisitions

You can use internal requisitions to obtain inventory items from organizations that belong to a different operating unit, set of books, or chart of accounts. For internal sales orders, you can ship from an inventory organization belonging to another operating unit, set of books, or chart of accounts. However, intercompany payable and receivable invoices are not automatically generated for internal requisitions.

Inventory Transfer between Organizations

In-transit shipments across organizations in different sets of books are not supported.

Expense Reports

Multiple operating units for different sets of books can share the same business group. Expense Reports defaults the Accounting Flexfield on the expense report header from the employee's primary assignment,

provided that the primary assignment is for the same set of books as the current operating unit's set of books. If you are entering expense reports for an employee whose primary assignment is for another set of books, enter them in the appropriate Accounting Flexfield.

Profile Options

Certain profile options, such as AR: Receipt Batch Source and AR: Transaction Batch Source reference data that is secured by operating unit. The list of values containing the profile option values in the System Profile Values and Personal Profile Values windows shows valid values for all operating units. When you are setting a responsibility-level profile option for a specific operating unit, you should choose a valid value in that operating unit.

Certain profile options in Oracle Sales and Marketing reference data that is secured by operating unit. You should set these profile options from a responsibility that links to a proper operating unit.

Location Flexfield Structure

Only operating units with the same Accounting Flexfield structure can share a Location Flexfield structure. If two operating units with the same tax structure cannot share the same Accounting Flexfield structure, each operating unit needs to have its own Location Flexfield structure. Location values then need to be defined for each Location Flexfield structure.

Tax Name for Locations

Tax names are defined for each operating unit, while locations are shared across operating units. If you assign a default tax name to a location, the tax name is a valid default only in operating units in which that tax name is defined.

Kits on Intercompany Invoices

When the Automatic Intercompany Invoices program generates receivable invoices for kits, individual item descriptions (rather than kit descriptions) are displayed.

Window and Report Titles

Report and window titles continue to show the set of books name, rather than the operating unit or legal entity name.

User Primary Keys

Most user primary keys only need to be unique within an operating unit. The order type name and picking batch name, for example, are exceptions; they are unique across operating units.

Limitations on Multiple Operating Units per Set of Books

The following limitations apply only when you have multiple operating units per set of books. They do not apply if you have one operating unit per set of books. You can implement an enterprise structure that represents multiple operating units per set of books, as long as it is understood that these limitations apply.

Tax/Fiscal Reporting

Legal entities are used in two modules, Automatic Intercompany Invoicing and Movement Statistics. You can run some tax reports at the legal entity or set of books level. See: Multiple Organizations Reporting: page 5 – 2.

For the other tax reports, in the products which previously required multiple installations, tax or fiscal reporting reflects transactions in one operating unit. Legal entity reporting (such as tax reporting) that involves subledger products is done at the operating unit level. If all the operating units for a given set of books belong to the same tax reporting entity, you must sum the tax data manually. You must be aware of this limitation if Oracle Financials for your country provides subledger VAT reports.

Document Sequencing

Document sequencing is available at the set of books level. Legal entities for the same set of books must share document sequences. If each legal entity requires its own numbering sequence, you must set up a separate set of books for each legal entity.

Period Statuses

All of the operating units that share a set of books also share the same period statuses.

When you update the period status to Open in one operating unit, that period is opened for all operating units within the set of books.

When you attempt to update the period status to Closed in one operating unit, the system checks for unposted transactions in all operating units within the set of books. If there are unposted transactions in any of the operating units, the system asks you to resolve the unposted transactions for those operating units before it allows you to close the period for the set of books.

Posting to Oracle General Ledger

When the Multiple Organizations enabled products post to Oracle General Ledger, you need to run the posting process from each operating unit. You cannot run the posting process for all operating units in the set of books in a single process.

CHAPTER

5



Reporting

This chapter contains information on reporting across operating units using Multiple Organizations Reporting.

Overview of Multiple Organizations Reporting

Multiple Organizations Reporting enhances the reporting capabilities of Oracle Applications products by allowing you to report at the:

- Set of books level
- Legal entity level
- Operating unit level

The Multiple Organizations Reporting feature is comprised of three components:

Reporting Data Security

The reporting level a user can choose is restricted by the profile option MO: Top Reporting Level.

The value of this profile option is set to Operating Unit at the site level. Your system administrator can set this profile option at the responsibility level. To run reports across organizations, the profile option value should be set to Legal Entity or Set of Books.

Reporting Parameters

Two new parameters have been added to the reports that are enabled for Multiple Organizations Reporting: Reporting Level and Reporting Context.

- **Reporting Level:** Allows users to choose the level at which they want to report. The valid options are Set of Books, Legal Entity, and Operating Unit. Valid options are further restricted based on the profile option MO: Top Reporting Level.
- **Reporting Context:** Allows users to choose an entity within the reporting level they have selected. Valid options are set of books names, legal entity names, or operating unit names, depending on the reporting level value.

Multiple Organizations Reporting API

Multiple Organizations Reporting-enabled reports use the Multiple Organizations Reporting API to determine at runtime the operating units for which the report will be run.

Set Top Reporting Level Profile Option: page 2 – 21

Running Reports

Prerequisites

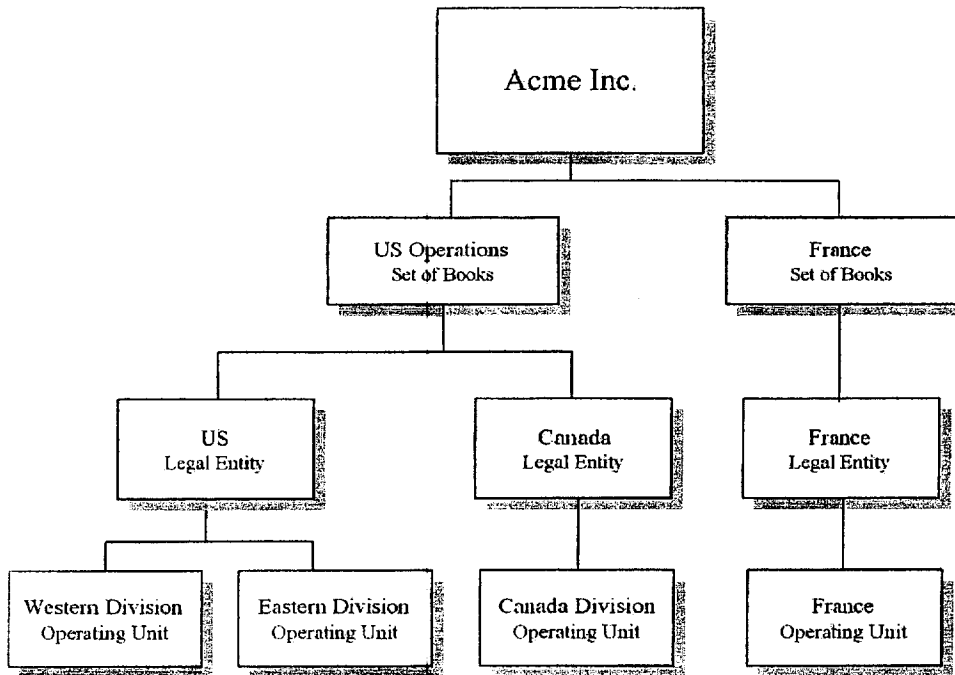
- Ensure you have set the MO: Top Reporting Level profile option.
See: Set Top Reporting Level Profile Option: page 2 – 21.

► **To run reports at different reporting levels:**

1. Navigate to the Submit Request window.
2. At the Submit Request window, choose the report you want to run.
3. At the Parameters window, choose the reporting level (Set of Books, Legal Entity, or Operating Unit).
4. Choose the reporting entity.

Example

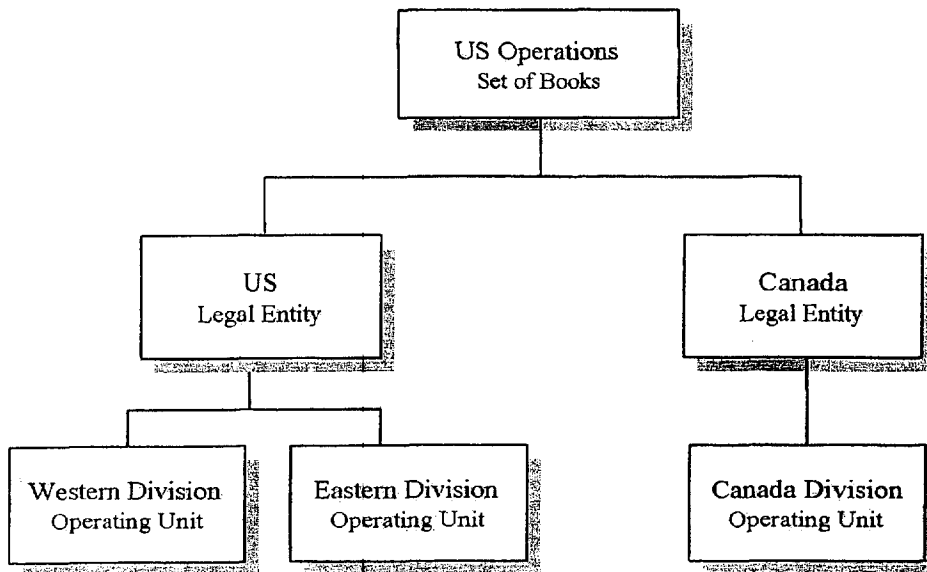
Assume Acme Inc. has Multiple Organization architecture set up as shown in the figure below. You are an Oracle Applications user connecting to a responsibility that is linked to the Western Division operating unit.



The top reporting level for your responsibility can be set to Set of Books, Legal Entity, or Operating Unit. These scenarios are discussed below.

Top Reporting Level is Set to Set of Books

If the top reporting level is set to Set of Books, you can run reports at the set of books, legal entity, or operating unit level. You can submit your reports with any of the reporting entities shown below:



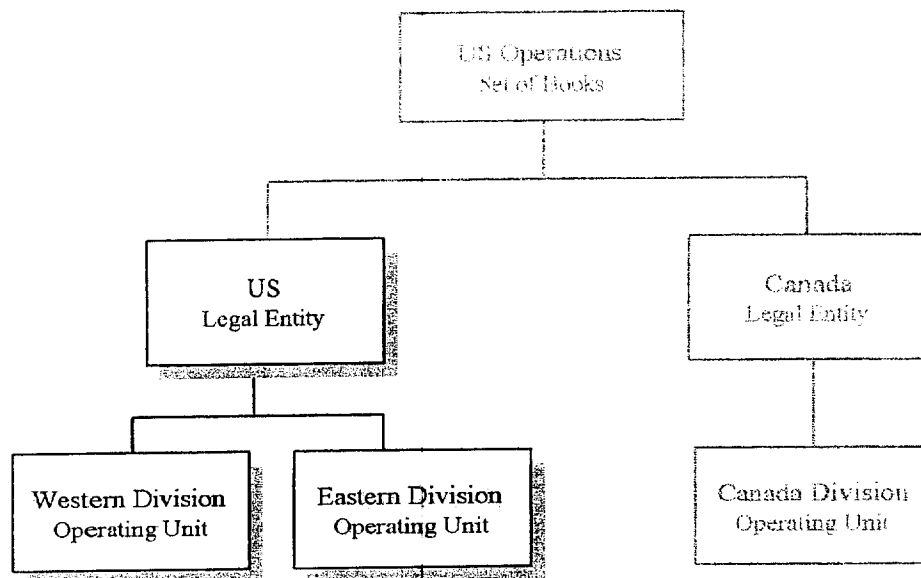
When you submit a report at the set of books level, the reporting context automatically defaults and is restricted to the U.S. Set of Books, because this is the set of books for the Western Division operating unit.

When you submit a report at the legal entity level, you can choose the U.S. legal entity or the Canada legal entity as your reporting context. The report will contain data for all operating units under the legal entity you select.

When you submit a report at the operating unit level, you can choose Western Division, Eastern Division, or Canada as your reporting context. The report will contain data for the operating unit you select.

Top Reporting Level is Set to Legal Entity

If the top reporting level is set to Legal Entity, you can run reports at the legal entity or operating unit level. You can submit your reports with the reporting entities shown below:

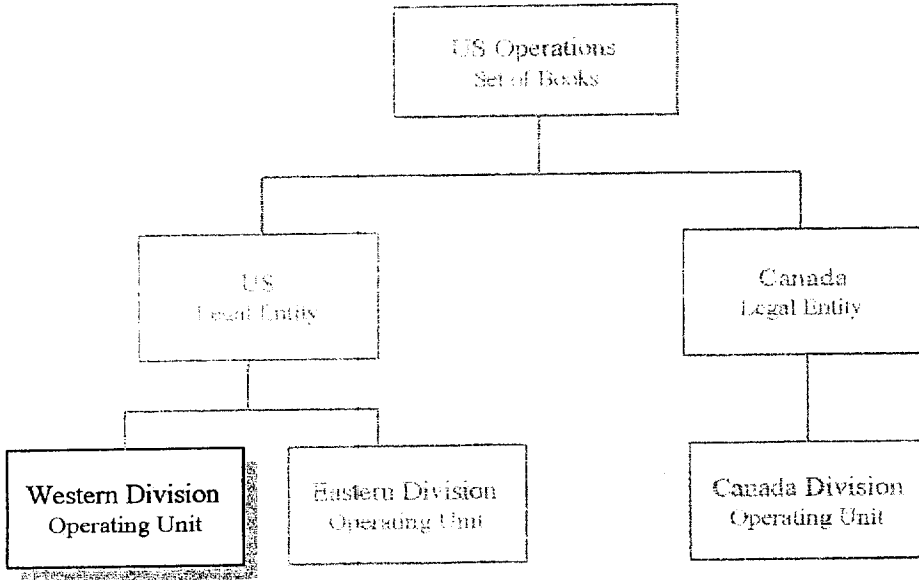


When you submit a report at the legal entity level, the reporting entity automatically defaults and is restricted to the U.S. legal entity, because this is the legal entity for the Western Division operating unit. The report will contain data for all operating units under this legal entity.

When you submit a report at the operating unit level, you can choose either Western Division or Eastern Division as the reporting context. The report will contain data for the operating unit you select.

MO: Top Reporting Level Profile Option is Set to Operating Unit

If the top reporting level is set to Operating Unit, you can run reports at the operating unit level only. You can view data only in the operating unit assigned to your responsibility.



Your current operating unit, Western Division, automatically defaults to the reporting context. The report will contain data for the Western Division operating unit only.

Reports

You can run the following reports at the set of books, legal entity, or operating unit level:

Oracle Payables

- Accounts Payable Trial Balance
- Payables Accounting Entries Report
- Payables Account Analysis Report

Oracle Receivables

- Aging - 4 Buckets Report
- Aging - 7 Buckets Report
- Aging - 7 Buckets - By Salesperson Report
- Aging - 7 Buckets - By Collector Report
- Aging - 7 Buckets - By Account Report
- Credit Hold Report
- Customer Credit Snapshot

Enterprise Tax

- Tax Audit Trail
- Tax Register
- Use Tax Liability
- Intra-EU VAT Audit Trail
- U.S. Sales Tax Report
- Tax Reconciliation Report
- Financial Tax Register
- Canadian GST / PST Tax Report

Asia/Pacific Localizations

- Singaporean GST F5 Report
- Thai Payables Incomplete Tax Invoice Report
- Thai Payment Delivery Report

- Thai Input Tax Summary Report
- Thai Output Tax Summary Report
- Taiwanese Output VAT Report
- Taiwanese Receivables Government Uniform Invoice Report
- Taiwanese Receivables Zero Rate Tax Report
- Taiwanese Payables Sales/Purchase Return and Discount Certificate Report
- Taiwanese Pro Forma 401 Report
- Taiwanese Purchase Return and Discount Report
- Taiwanese Sales Return and Discount Report
- Taiwanese Input VAT Report
- Taiwanese EDI Government Uniform Invoice

APPENDIX

A



Navigation Paths

Multiple Organization Navigation Paths

This section shows the default navigation paths for most of the windows used for Multiple Organizations in Oracle Applications as they are supplied. In addition, the table below provides a page number reference for the description of each window in this manual.

The responsibility that you use determines which of these windows you can use and how you access them. Your system administrator sets up navigation menus and task flows for your responsibility. The system administrator may also create customized versions of some of these windows using different window titles.

Text in brackets ([]) indicates a button.

Window Title	Reference
Standard Path	
Assign Security Rules	2 – 17
Oracle General Ledger: Setup > Financials > Flexfields > Descriptive > Security > Assign	
or	
Setup > Financials > Flexfields > Key > Security > Assign	
or	
Setup > Financials > Flexfields > Validation > Security > Assign	
Create Intercompany AP Invoices	3 – 14
Oracle Inventory: Requests > [Submit a New Request] > [OK] > Select <i>Create Intercompany AP Invoices</i>	
Create Intercompany AR Invoices	3 – 11
Oracle Inventory: Requests > [Submit a New Request] > [OK] > Select <i>Create Intercompany AR Invoices</i>	
Define Intercompany Relations	3 – 16
Oracle Inventory: Setup > Organizations > Intercompany Relations	
Define Inventory Organization Security	2 – 13
Oracle Inventory: Setup > Org > Access	
Define Organizations	2 – 7
Oracle Purchasing: Setup > Organizations > Organizations	
Define Responsibilities	2 – 11
System Administrator: Security > Responsibility > Define	
Define Security Rules	2 – 17
Oracle General Ledger: Setup > Financials > Flexfields > Descriptive > Security > Define	
or	
Setup > Financials > Flexfields > Key > Security > Define	

or
Setup > Financials > Flexfields > Validation > Security > Define

Define Set of Books	2 - 5
Oracle General Ledger: Setup > Financials > Books	
Update Profile Options	2 - 11
System Administrator: Profile > System	

APPENDIX

B



Account Generator

Using the Account Generator to Generate the Intercompany COGS Account

This essay describes how to use the Account Generator to generate the Intercompany Cost of Goods Sold account.

The Account Generator uses Oracle Workflow to derive Accounting Flexfield combinations. The Create Intercompany AP Invoices process uses the Account Generator to construct an Intercompany Cost of Goods Sold Accounting Flexfield combination (Intercompany COGS account) for each regular invoice line in the intercompany payables invoices.

The default process builds the COGS Account using the Cost of Sales Account for the item and organization for each inventory transaction line. You can optionally define functions and processes to customize the default process for each set of books that you have defined.

You can view and customize Account Generator processes through the Oracle Workflow Builder. See: *Oracle Workflow Guide*.



Create Intercompany AP Invoices (See page 3 – 14)



Overview of the Account Generator
(*Oracle Applications Flexfields Guide*)

Decide How to Use the Account Generator

In Release 10, several Oracle Applications products used FlexBuilder to derive account code combinations for certain account transactions. In Release 11, FlexBuilder is replaced by the Account Generator to provide implementation teams with even greater flexibility and a better user interface with Oracle Workflow.

If you are upgrading from Release 10 and used FlexBuilder, then you should perform the equivalent of this setup step as part of your upgrade. See the FlexBuilder chapter of the *Oracle Applications Upgrade Preparation Manual* for more information.

If you are implementing Inventory for the first time, you need to consider whether the default Account Generator process is appropriate for each set of books that uses a unique Accounting Flexfield structure. For each structure and set of books, you can choose one of the following:

- Use the default Account Generator process, *Generate Default Account*
- Customize the default Account Generator process

This decision determines which setup steps your implementation team needs to perform.

Prerequisites to Using the Account Generator

Before using the Account Generator on a production database to create a COGS Account, you must:

- Define your Accounting Flexfield structure for each set of books.
- Define flexfield segment values and validation rules.
- Choose whether you want to use the default Account Generator process, or if you need to customize it to meet your accounting needs.
- Then do one of the following for each set of books:
 - Choose to use the default Account Generator process, or
 - Customize the default Account Generator process, test your customizations, and choose the process for a flexfield structure, if necessary.



Customizing the Account Generator (See page B – 5)

The Default Account Generator Process

Evaluate whether the default Account Generator process meets your accounting requirements. No setup steps are required to use the default. The default process can also be updated later as your needs change. You can make minor changes to the default process without changing the name.

Note: If you used FlexBuilder in Release 10 but did not customize the default configuration, you can use the default Account Generator process in Release 11, which gives you the same result as the default assignments in FlexBuilder.

Each Account Generator workflow is called an *item type*. Oracle Inventory comes with the following Account Generator item type:

- Inventory Cost of Goods Sold Account

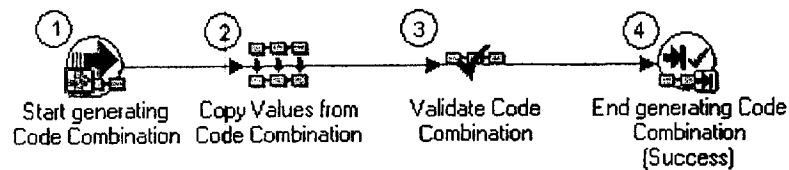
The Inventory Cost of Goods Sold Account contains the following workflow processes:

- Generate Default Account

- Generate Account Using FlexBuilder Rules

Generate Default Account Process

The Generate Default Account Process consists of four unique activities to comprise the four activity nodes. In the workflow diagram shown below, the process activity nodes are numbered for reference in the descriptions that follow. (The numbers are not part of the process diagram.)



Start Generating Code Combination (Node 1)

This is a standard activity that marks the start of the process.

Copy Values from Code Combinations (Node 2)

This is a standard function that copies all the segment values from a given code combination to the combination that is being generated. This function has two attributes:

- **Code Combination ID:** The COGS account derived from the order type.
- **Replace Existing Value:** Set to 'True' to always copy the segment values.

Validate Code Combination (Node 3)

This is a standard function that executes after node 2. This function validates the code combination that has been generated and has two attributes:

- **Validation Type:** Set to 'Generate Code Combination ID' to do a full validation and generate a code combination ID.

- **New Code Combinations are Allowed:** Set to 'True' so that if the key flexfield structure has dynamic insert allowed, then the validation will not generate an error if the combination does not exist in the code combination table.

End Generating Code Combination (Node 4)

This standard function is called to end the Generate Default Account process. This function is marked as the End activity.

Generate Account Using FlexBuilder Rules Process

If you used FlexBuilder in a previous release to generate account combinations, you can use the Generate Account Using FlexBuilder Rules process to replicate your FlexBuilder setup automatically, without changing any of your predefined FlexBuilder Rules, and without customizing the Account Generator. The Generate Account Using FlexBuilder Rules process includes a function generated during your upgrade from Release 10 to Release 11.

If you are upgrading from Release 10, follow the guidelines in the FlexBuilder chapter of the *Oracle Applications Upgrade Preparation Manual*.



Customizing the Account Generator (See page B – 5)

Customizing the Account Generator

Oracle Inventory provides a default Account Generator process, *Generate Default Account*. If the default process does not satisfy your accounting requirements, you can use the Oracle Workflow Builder to customize the default process or create a new one.

If you want to create a new process to meet your company's needs, use the Oracle Workflow Builder to create a new process, or copy the default process and change its name before making extensive changes to it.

For more information on the generic features and functions of the Account Generator, see the Customizing the Account Generator section of the *Oracle Applications Flexfields Guide*.

For more information on how to use the Oracle Workflow Builder, see the *Oracle Workflow Guide*.

The Account Generator process used to construct the Intercompany COGS account is very similar to the Account Generator process Oracle

Order Entry/Shipping uses to construct the COGS account. To see a customization example for the Generate COGS Account process in Oracle Order Entry/Shipping, see: *Using the Account Generator in Oracle Order Entry/Shipping (Oracle Order Entry/Shipping User's Guide)*.

Attributes for the Inventory COGS Account Process

The following table shows the attributes that are defined for the Inventory Cost of Goods Sold Account item type to fully identify the invoice for which the Account Generator generates a COGS account. The attributes are listed by display name in the following table.

Attribute Name	Description	Internal Name
Chart of Accounts ID	Chart of Accounts ID	CHART_OF_ACCOUNTS_ID
COGS Account from item (derived)	COGS account derived from item	IC_ITEM_COGS
COGS Account from order type (derived)	COGS account derived from order type	IC_ORDER_TYPE_COGS
COGS Account from organization (derived)	COGS account derived from organization	IC_ORGANIZATION_COGS
Customer ID (raw)	Customer ID	IC_CUSTOMER_ID
Error Message	Error Message	ERROR_MESSAGE
Inventory Item ID (raw)	Inventory Item ID	IC_ITEM_ID
Order Header ID (raw)	Order Header ID	IC_ORDER_HEADER_ID
Order Line ID (raw)	Order Line ID	IC_ORDER_LINE_ID
Order Type ID (raw)	Order Type ID	IC_ORDER_TYPE_ID
Organization ID (raw)	Organization ID	IC_ORG_ID
Selling Operating Unit (raw)	Selling Operating Unit	IC_SELL_OPER_UNIT

Table 5 - 1 Inventory COGS Account Process Attributes (Page 1 of 1)

Glossary

balancing entity An organization for which you prepare a balance sheet, represented as a balancing segment value in your accounting flexfield. This is the equivalent of a fund in government organizations. Examples include companies, strategic business units, and divisions.

business group An organization which represents the consolidated enterprise, a major division, or an operation company. This entity partitions Human Resources information.

data group Specifies an ORACLE ID (user) and determines to which schema a responsibility's forms connect.

intercompany invoice An automatically generated statement that eliminates intercompany profit. This transaction may occur between organizations in the same or different legal entities.

inventory organization An organization that tracks inventory transactions and balances, and/or that manufactures or distributes products.

legal entity An organization that represents a legal company for which you prepare fiscal or tax reports. You assign tax identifiers and other relevant information to this entity.

multiple installations Refers to installing subledger products (AP, AR, PO, OE) multiple times. This is no longer necessary under a Multi-Org implementation.

multiple sets of books A General Ledger concept for having separate entities for which chart of accounts, calendar, or functional currency differs.

operating unit An organization that partitions data for subledger products (AP, AR, PO, OE). It is roughly equivalent to a single pre-Multi-Org installation.

organization A business unit such as a plant, warehouse, division, department, and so on. Order Management refers to organizations as warehouses on all Order Management windows and reports.

responsibility Determines the data, forms, menus, reports, and concurrent programs you can access in Oracle Applications. It is linked directly to a data group. Several users can share the same responsibility, and a single user can have multiple responsibilities.

set of books A financial reporting entity that partitions General Ledger information and uses a particular chart of accounts, functional currency, and accounting

calendar. This concept is the same whether or not the Multi-organization support feature is implemented.

multiple organizations The ability to define multiple organizations and the relationships among them within a single installation of Oracle Applications. These organizations can be sets of books, business groups, legal entities, operating units, or inventory organizations.

Multiple Reporting Currencies An Oracle General Ledger feature that allows you to report in your functional currency and in one or more foreign currencies.

status line A status line appearing below the message line of a root window that displays status information about the current window or field. A status line can contain the following: ^ or v symbols indicate previous records before or additional records following the current record in the current block; **Enter Query** indicates that the current block is in Enter Query mode, so you can specify search criteria for a query; **Count** indicates how many records were retrieved or displayed by a query (this number increases with each new record you access but does not decrease when you return to a prior record); the **<Insert>** indicator or *lamp* informs you that the current window is in insert character mode; and the **<List>** lamp appears when a list of values is available for the current field.

Index

A

Access, controlling. *See* Security
access, controlling, 1 – 10
Account Generator, 3 – 8, B – 2
 attributes, B – 6
 customizing, B – 5
 default process, B – 3
 Generate Account Using FlexBuilder Rules,
 B – 5
 intercompany COGS account, 3 – 15
accounting organization model, 1 – 9
Applications products, implementing, 2 – 14
APPS Schema, matching synonyms, 4 – 4
APPS schema, 4 – 2
asset organizations, 1 – 6
Assign Security Rules window, 2 – 18
AutoInvoice, 3 – 12

B

balancing entities, 1 – 5
business groups, 1 – 4
 multiple, 2 – 7

C

Choose Organization window, 1 – 11
closing periods, 3 – 9
conflict domains, setting up, 2 – 21

convert to Multi-Org, example, 4 – 7
Cost of goods sold, B – 2
Cost of Goods Sold Account, Account
 Generator, B – 2
Create Intercompany AP Invoices. *See*
 Processes, Create Intercompany AP
 Invoices
Create Intercompany AR Invoices. *See*
 Processes, Create Intercompany AR
 Invoices
currency, exchange rates, 3 – 9
Customer field, 3 – 17
Customer Location field, 3 – 17

D

database, generating support, 2 – 12
Database objects, relationships, 4 – 5
Define Intercompany Relations window, 3 – 16
Define Organization window, 2 – 7, 2 – 8
Define Responsibility window, 2 – 11
Define Security Rule window, 2 – 17
Define Set of Books window, 2 – 5
distribution organization model, 1 – 9
Document sequencing, 4 – 24
document sequencing, 2 – 20

E

European implementations, 1 – 12

F

FlexBuilder. *See* Account Generator
Freight Account field, 3 – 18

freight charges, invoicing, 3 – 12

H

Header Description field, 3 – 15

HR organizations, 1 – 6

human resources, organization model, 1 – 7

I

intercompany accounting, 1 – 11

Intercompany COGS Account, Account Generator, B – 2

intercompany COGS account, 3 – 15

intercompany invoicing, 3 – 2

accounting details, 3 – 3

basic business needs, 3 – 2

process flow diagram, 3 – 10

intercompany relations, defining, 2 – 20, 3 – 6, 3 – 16

Intrastat movement statistics, 3 – 12

inventory organizations, 1 – 5

relationship to operating units, 1 – 10

relationship to Order Entry, 1 – 10

relationship to Purchasing, 1 – 10

invoice import, 3 – 14

invoicing, intercompany, 3 – 2

K

Kits on Intercompany Invoices, 4 – 23

L

legal entities

definition, 1 – 4

posting to a set of books, 1 – 9

securing balancing segment values, 2 – 17

selling and shipping, 1 – 11

Limitations

centralization/decentralization, 4 – 20

data security, 4 – 20

Expense Reports, 4 – 22

global vendor and customer registries, 4 – 21

intercompany support, 4 – 21

internal requisitions, 4 – 22

inventory transfer between organizations, 4 – 22

receiving, 4 – 22

Limitations of multiple organization support, 4 – 20

Line Description field

intercompany AP invoices, 3 – 15

intercompany AR invoices, 3 – 13

Location Flexfield Structure, 4 – 23

M

materials management organization model, 1 – 9

MO: Top Reporting Level profile option, 2 – 21

Multiple Business Groups. *See* Business groups, multiple

Multiple Operating Units per Set of Books, 4 – 24

Multiple Organization Tables, 4 – 2

Multiple organizations, technical overview, 4 – 2

multiple organizations

basic business needs, 1 – 2

converting database architecture, 2 – 12

implementing, 2 – 2

in a single installation, 1 – 3

overview, 1 – 2

O

operating units, 1 – 5

relationship to legal entities, 1 – 9

Oracle General Ledger, posting, 4 – 25

Oracle Order Entry/Shipping, Receivables Interface, 3 – 4

Oracle Payables

Invoice Import, 3 – 14

tax structures, 3 – 8

Oracle Projects, organizations, 1 – 6

- Oracle Receivables
 - invoice batch source, 3 – 8
 - system options, 3 – 8
 - tax structures, 3 – 8
- Organization classifications, required information, 2 – 9
- organization models
 - accounting, 1 – 9
 - distribution, 1 – 9
 - human resources, 1 – 7
 - materials management, 1 – 9
- organization relationships, defining, 2 – 8
- organization types
 - asset organization, 1 – 6
 - balancing entities, 1 – 5
 - business groups, 1 – 4
 - HR organizations, 1 – 6
 - in Oracle Projects, 1 – 6
 - inventory organizations, 1 – 5
 - legal entities, 1 – 4
 - operating units, 1 – 5
 - set of books, 1 – 4
- Organizations
 - limitations, 4 – 20
 - RDBMS Variable, 4 – 5
 - table changes, 4 – 2
- organizations
 - controlling access, 1 – 10
 - defining, 2 – 7
 - defining inventory organization security, 2 – 13
 - defining the structure, 2 – 3
 - implementing products, 2 – 14
 - legal entities and balancing segments, 2 – 17
 - selling from, 1 – 11
 - shipping from, 1 – 11
 - types, 1 – 4

P

- Partitioned tables
 - by business group, 4 – 4
 - Oracle Applications products, 4 – 3
- period close, 3 – 9

- period statuses, 4 – 24
- processes
 - Create Intercompany AP Invoices, 3 – 5, 3 – 8, 3 – 14
 - Create Intercompany AR Invoices, 3 – 4, 3 – 11
 - Receivables Interface, 3 – 4
- Profile options, 4 – 23
- profile options
 - intercompany AP invoices, 3 – 14
 - intercompany AR invoices, 3 – 11
 - MO: Top Reporting Level, 2 – 21
 - MO: Operating Unit, 2 – 11

R

- RDBMS, variable, 4 – 5
- Receivables Interface, 3 – 4
- Replicate Seed Data program, 4 – 10
- reporting, MO: Top Reporting Level profile option, 2 – 21
- responsibilities, defining, 2 – 11
- Revalue Average field, 3 – 18

S

- Security, limitations, 4 – 20
- security, 1 – 10
 - data, 1 – 10
 - inventory organization, 1 – 10, 2 – 13
 - operating unit, 1 – 11
- Seed Data
 - Adadmin: convert to a multiple organization architecture, 4 – 10
 - installation or upgrade, 4 – 10
- Seed Data Replication, 4 – 9
- Selling Operating Unit field
 - intercompany AP invoices, 3 – 15
 - intercompany AR invoices, 3 – 13
 - intercompany relations, 3 – 17
- set of books
 - defining, 2 – 5
 - definition of, 1 – 4
- Setup Validation Report, 2 – 20

shipment transactions, invoicing, 3 – 12
Shipping Operating Unit field, 3 – 17
Supplier field, 3 – 18
Supplier Site field, 3 – 18

T

Tables, Multiple Organization, 4 – 2
Tax Name for Locations, 4 – 23
Tax reporting, 4 – 24
tax structures, 3 – 8

Transaction Type field, 3 – 17

U

User Primary Keys, 4 – 24

W

Window and Report Titles, 4 – 23
windows, Define Set of Books, 2 – 5

Reader's Comment Form

Multiple Organizations in Oracle Applications Release 11i
Part Number: A81174-02

Oracle Corporation welcomes your comments and suggestions on the quality and usefulness of this publication. Your input is an important part of the information we use for revision.

- Did you find any errors?
- Is the information clearly presented?
- Do you need more information? If so, where?
- Are the examples correct? Do you need more examples?
- What features did you like most about this manual? What did you like least about it?

If you find any errors or have any other suggestions for improvement, please indicate the topic, chapter, and page number below:

Please send your comments to:

Oracle Applications Documentation Manager
Oracle Corporation
500 Oracle Parkway
Redwood Shores, CA 94065 USA
Phone: (650) 506-7000 Fax: (650) 506-7200

If you would like a reply, please give your name, address, and telephone number below:

Thank you for helping us improve our documentation.